

EX PARTE

BRENTWOOD HILLS

SECTION NO. 2

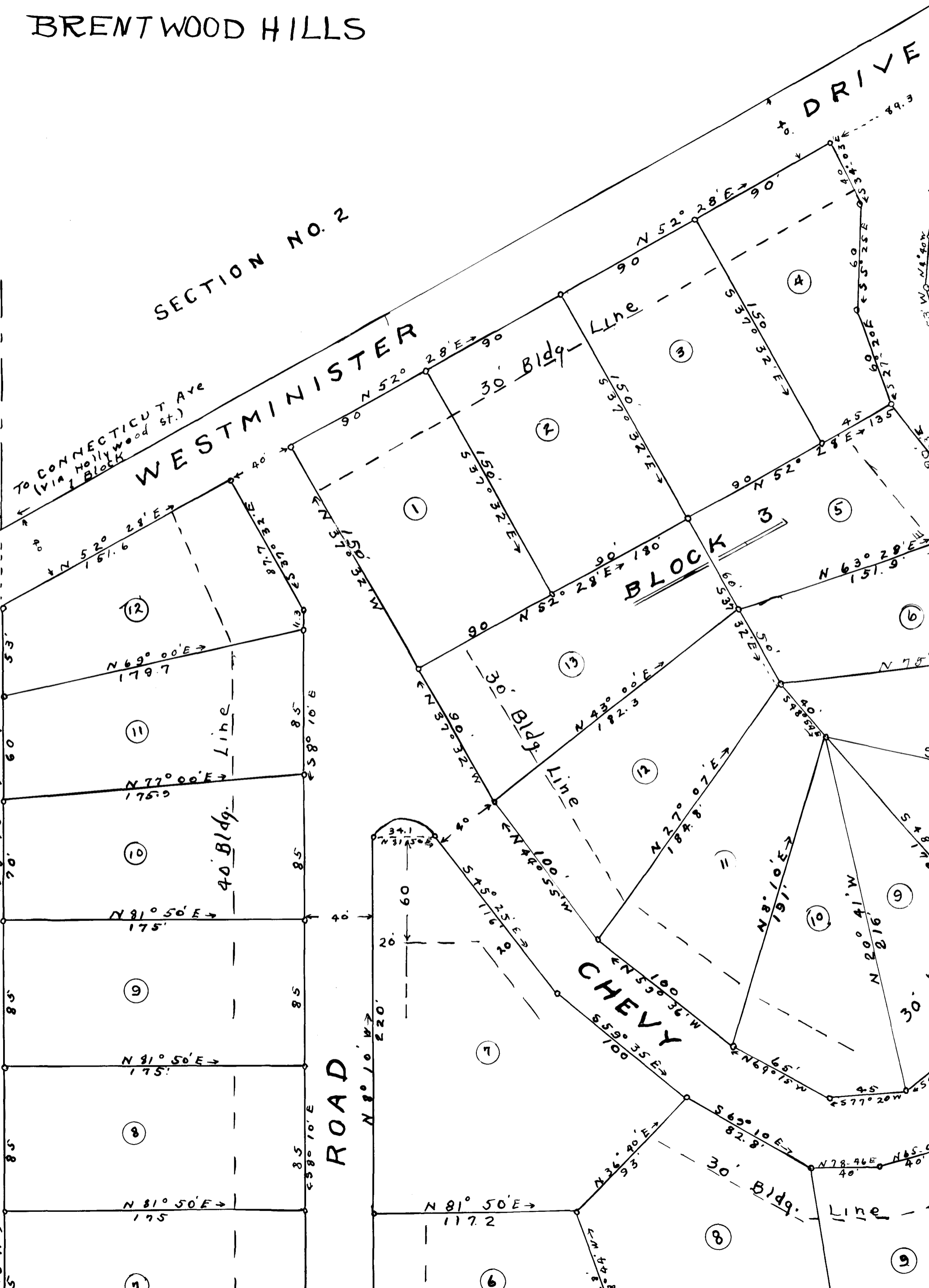
WESTMINISTER

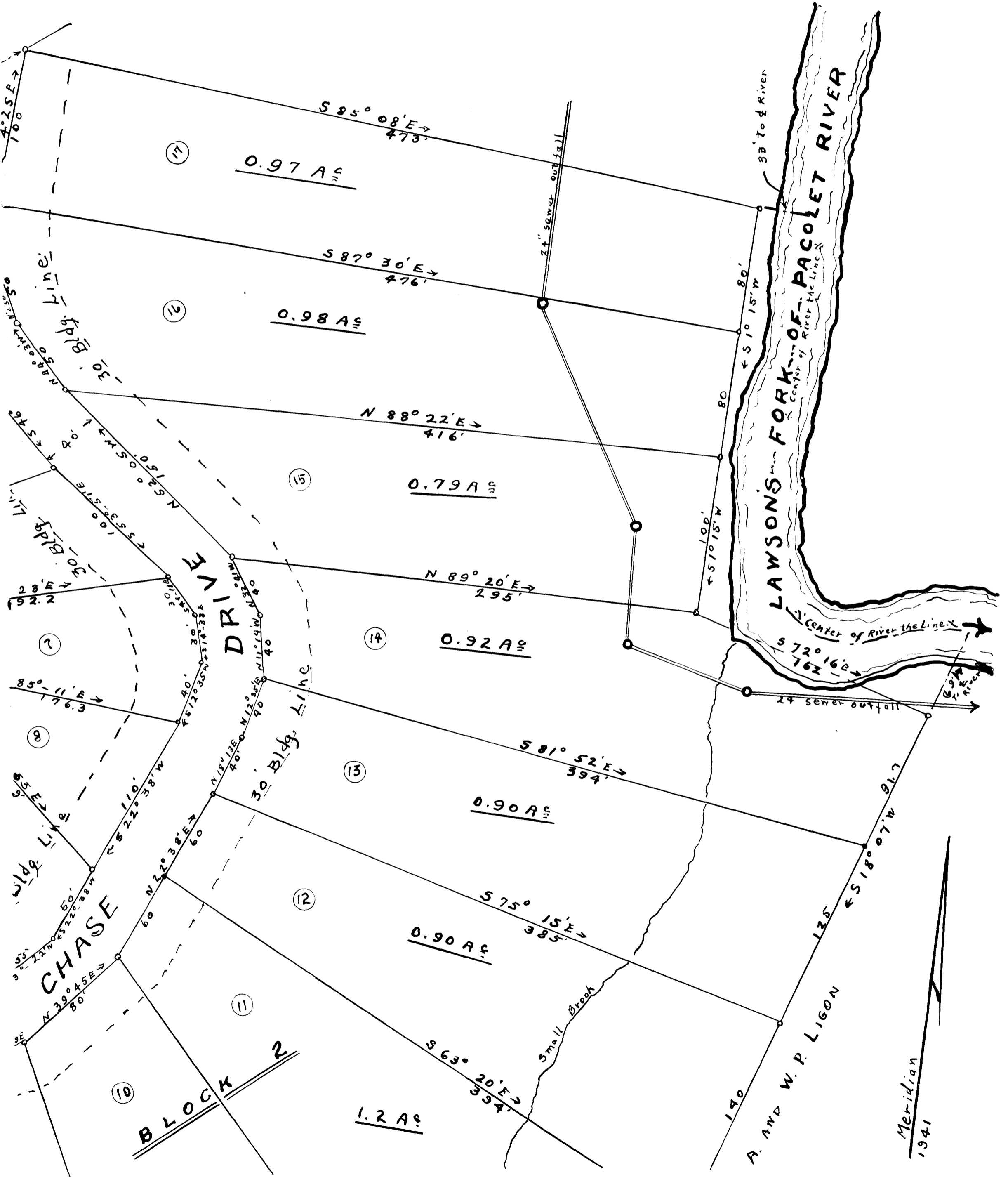
BLOCK 3

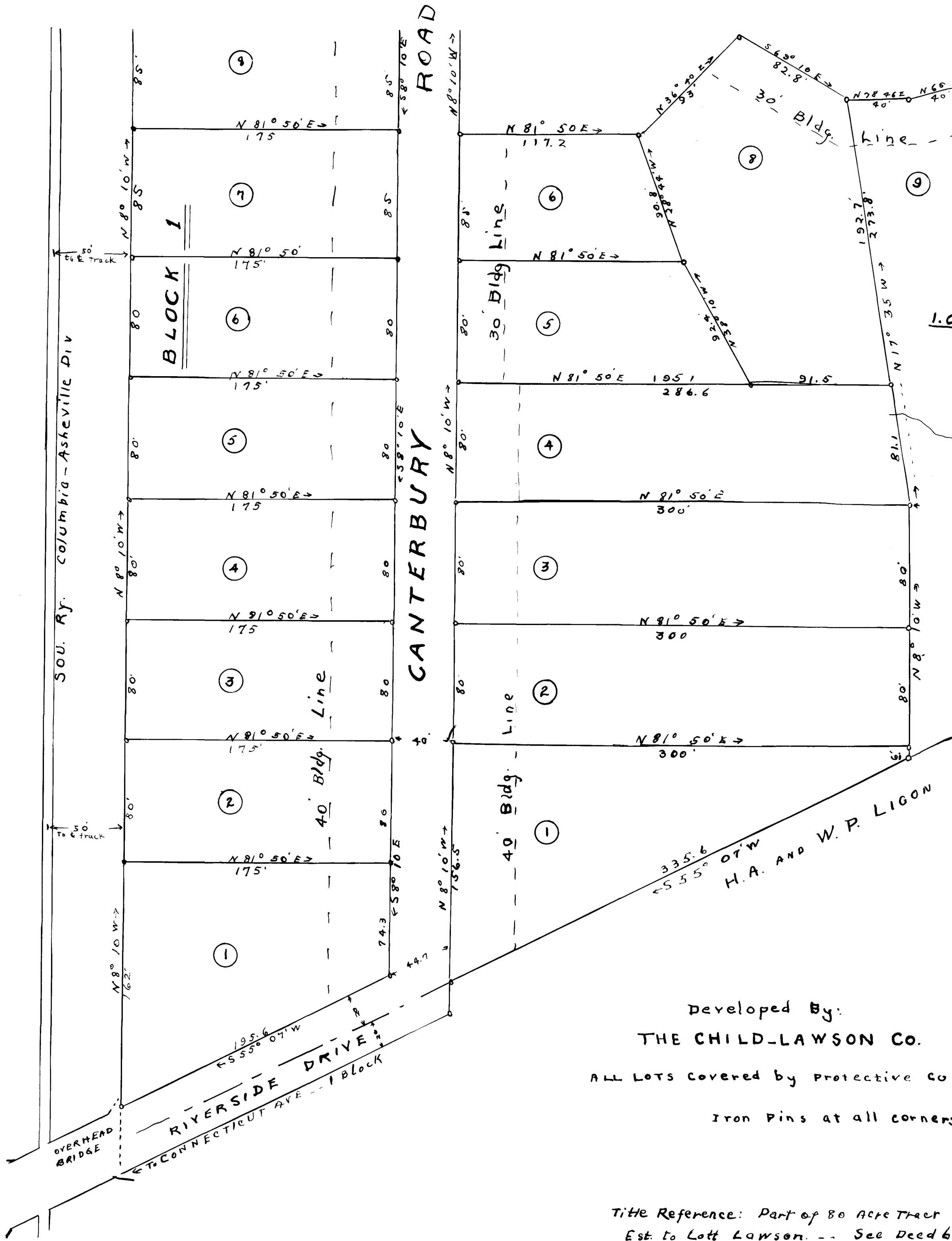
CHEVY

ROAD

To Spartenburg →
Overhead Bridge
50' track
Sov. R.R.



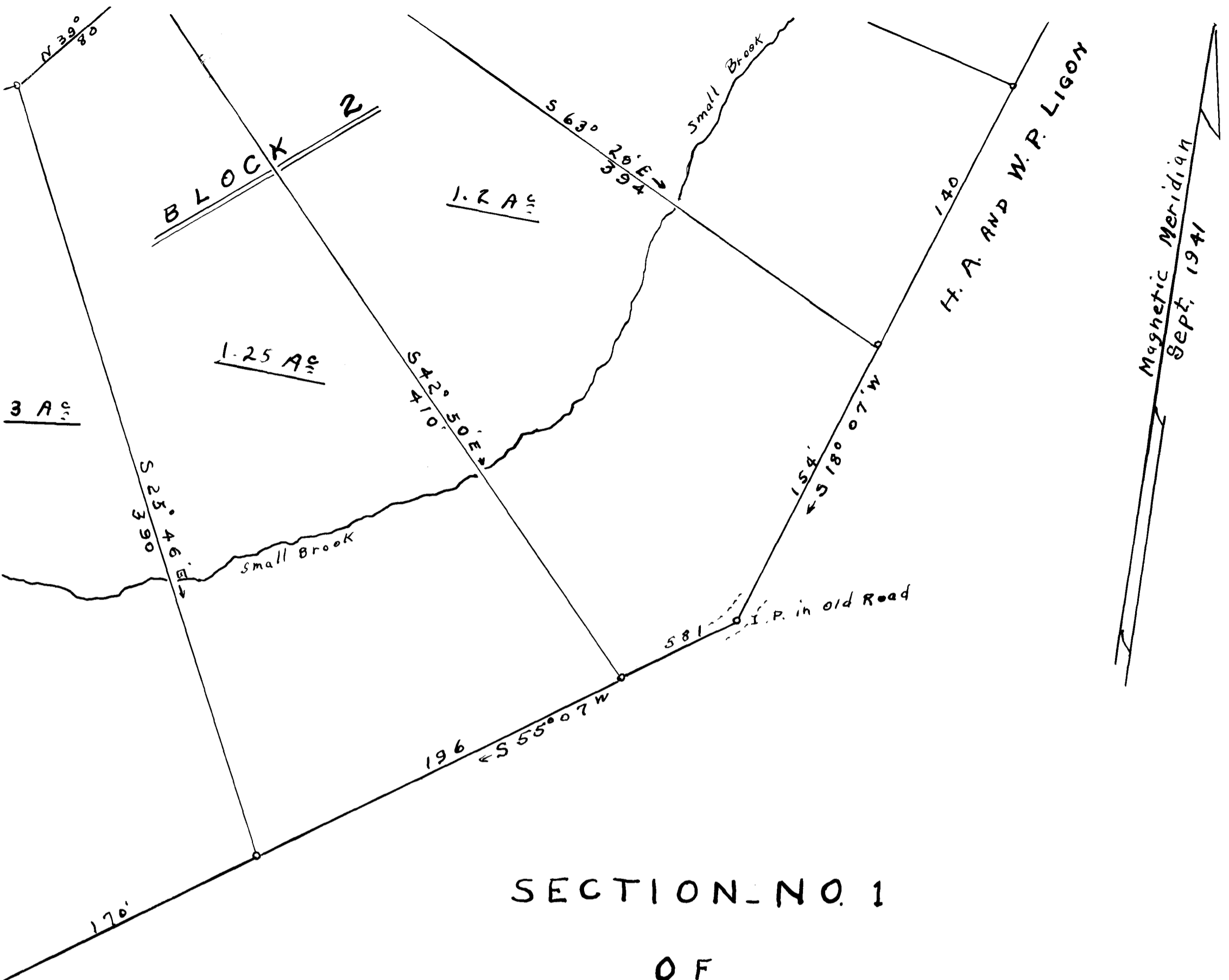




Developed By:
THE CHILD-LAWSON CO.

ALL LOTS covered by protective co
 Iron Pins at all corners

Title Reference: Part of 80 Acre Tract
 Est. to Lott Lawson. -- See Deed 6



SECTION NO. 1 OF BRENTWOOD HILLS

"Spacious Homesites For Distinctive Homes"

LOCATED 1 BLOCK EAST OF CONNECTICUT AVE.
NEAR THE CITY OF SPARTANBURG

SPARTANBURG CO. SOUTH CAROLINA

SCALE: 1" = 50' Sept. 15, 1941
W. N. WILLIS ENGINEERS

Spartanburg, S.C.
Designed by: Jos. S. Taylor
Plat by: Norman Barnett
Field: Jos. S. Taylor

venants.

sold by The S. B. Ezell
book 9. K page 608.

Registered, Certified and Examined Nov. 5, 1941 at 11:38 A.M.