

Form L-2.

Page.....

THE FEDERAL LAND BANK OF COLUMBIA.

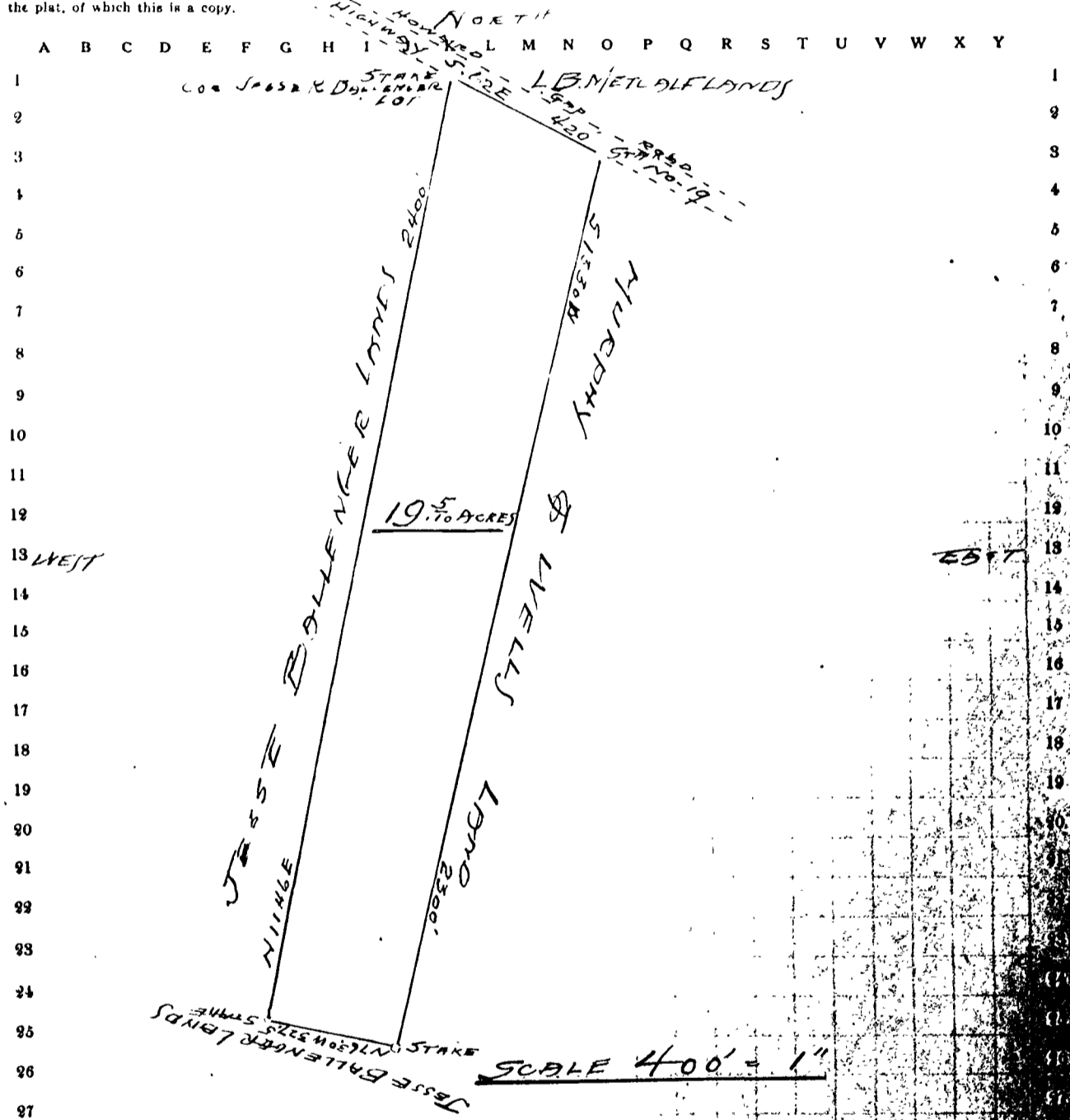
TRACING SHEET FOR PLATS.

Lands of J. HORTON SETTLE

1 This sheet must be used for tracing plats of tracts of the lands abstracted in the chain of title. Place this sheet over the plat to be traced so that the same will appear as nearly in the center of the sheet as possible; then trace all lines, courses and distances. Always show all adjoining landowners and indicate the point of the compass and copy all legends or explanatory notes, showing the date of survey, purpose of the same and by whom made.

2 If the plat is too large to be traced on this sheet, make the tracing first on Sheet Q-1, and then reduce it on Sheet Q in the following manner: Assume that a certain corner on the tracing on Sheet Q-1 lies within Block 14-G. Refer to Sheet Q and locate this corner in corresponding Block 14-G. The next corner on Sheet Q-1 lies within Block 9-L. Refer to Sheet Q and locate this corner in the corresponding Block 9-L. Draw a line connecting these two points, as the corresponding points on Sheet Q-1 are connected. So proceed around the perimeter of the plat of land as traced on Sheet Q-1, locating the corresponding corners on Sheet Q, and connecting the various corners so located until the point of departure is reached.

3 This sheet must be inserted in the abstract at its proper place, which is immediately following the instrument or proceedings which refers to the plat, of which this is a copy.



I hereby certify that I have this 20th day of November, 1926, compiled the above plat from the call in a deed dated January 2, 1920, from J.H. Rothrock to J. Horton Settle, recorded in Deed Book 6-E, page 629, R.M.C. Office for Spartanburg County, and that it closes satisfactorily within the rules of surveying and correctly represents the land shown thereon which contains 19.5 acres. This 20th day of November, 1926.

Spartanburg, S.C.

L.P. Epton
Surveyor

A B C D E F G H I J K L M N O P Q R S T U V W X Y