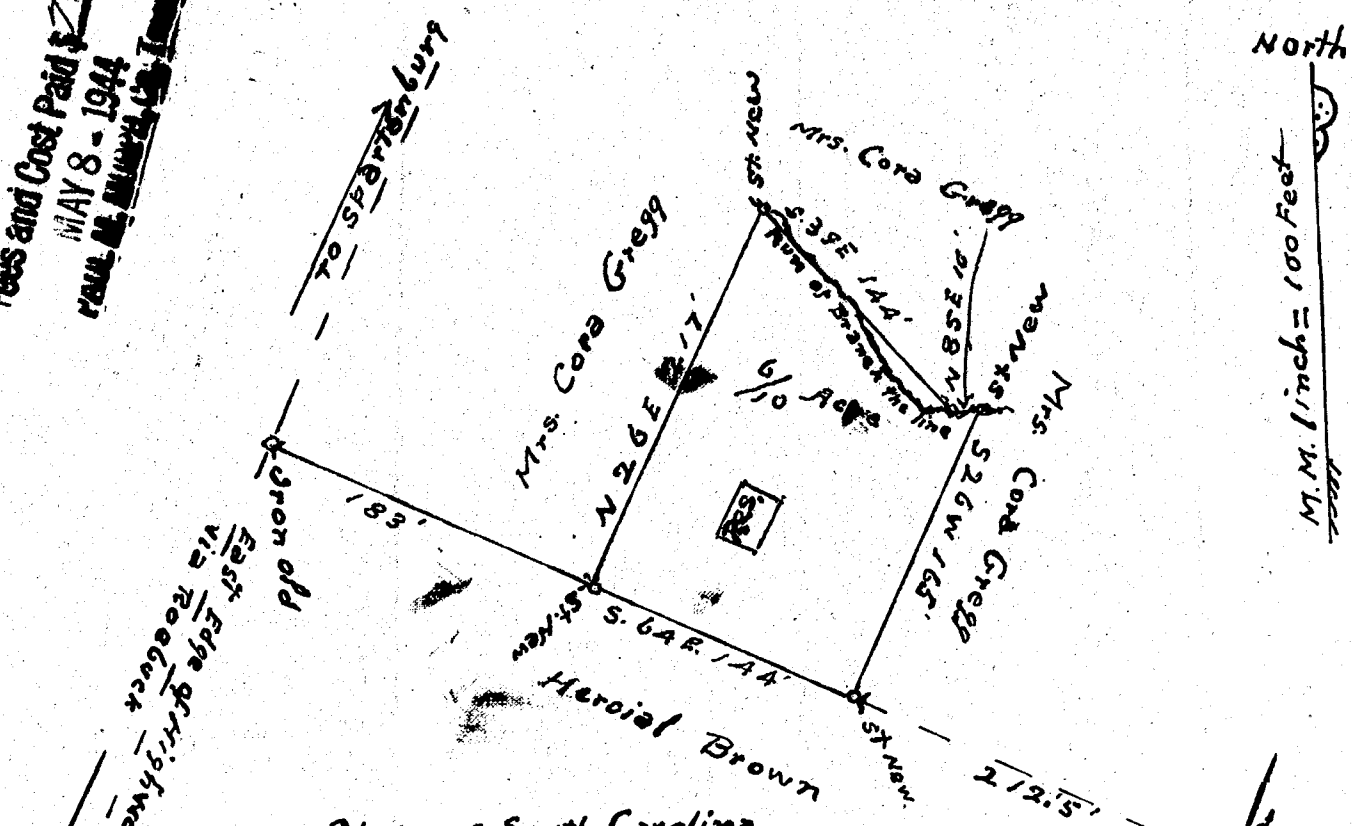


fees and Cost Paid \$7.75
MAY 8 - 1944
RECORDED AT THE OFFICE OF THE CLERK OF COURTS
SPARTANBURG, SOUTH CAROLINA



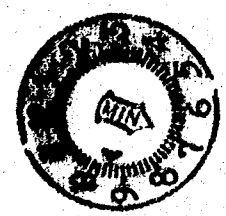
State of South Carolina
Spartanburg County
near Reebuck

PLAT

Represents six tenths $\frac{6}{10}$ Acres
surveyed at the request of Mrs. Cora Gregg
for her son Luther A. Gregg on which he
now lives. May 2, 1944.

Jno. M. Caddy (Surveyor)
Reebuck SC

RECORDED



MAY - 8 1944