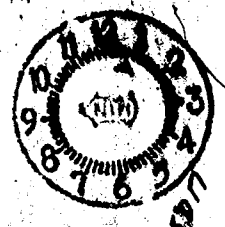


234

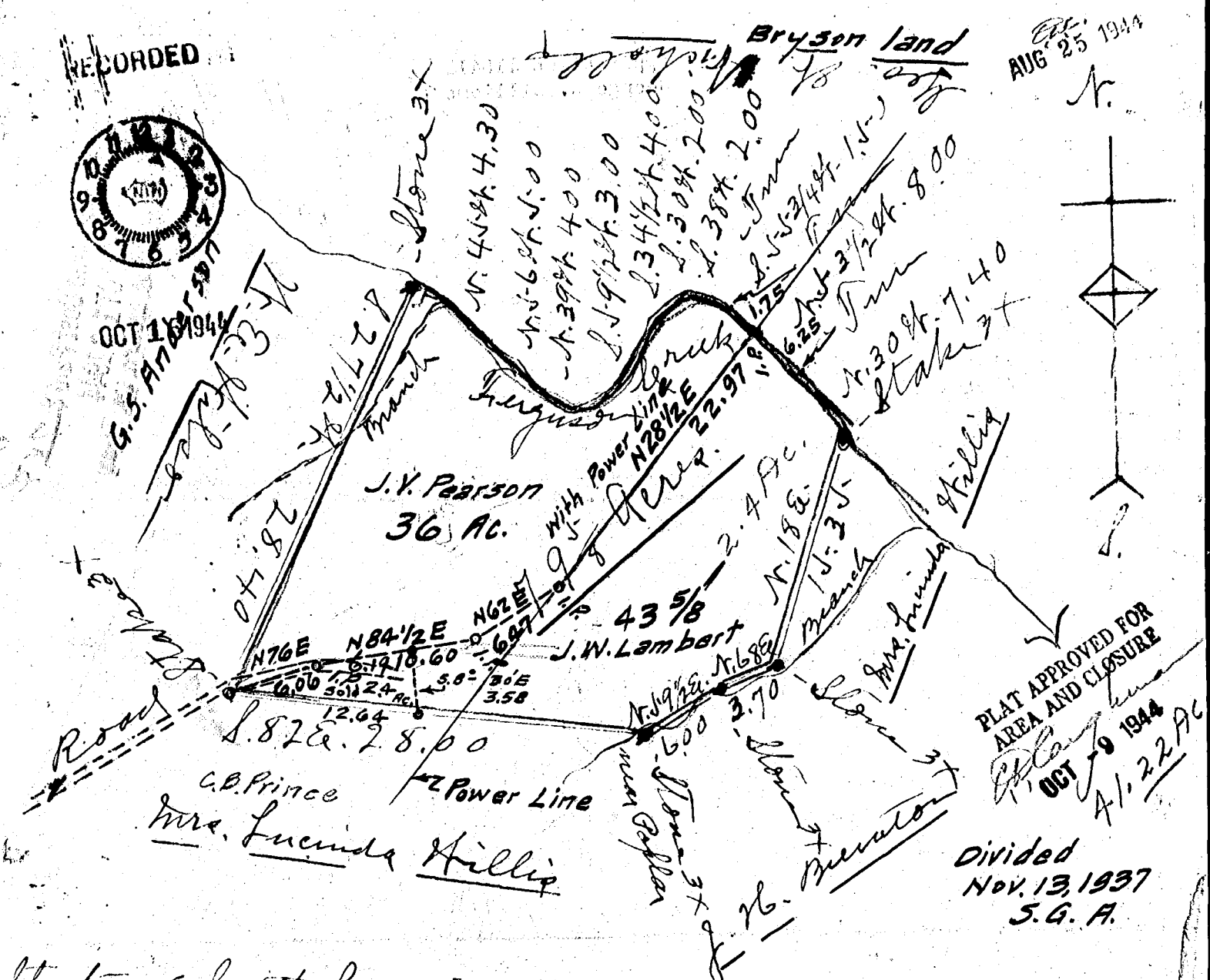
RECORDED



OCT 18 1944

G.S. 177

REC. AUG 25 1944



PLAT APPROVED FOR AREA AND CLOSURE

OCT 19 1944

Divided Nov. 13, 1937 S.G. A.

State of South Carolina  
County of Spartanburg

Scale 10 ch. per inch.

J. J. Wilson's Plot  
79 5/8 Acres

Surveyed Nov. 27, 1912  
S. G. Anderson  
Surveyor

Lee Grumbles