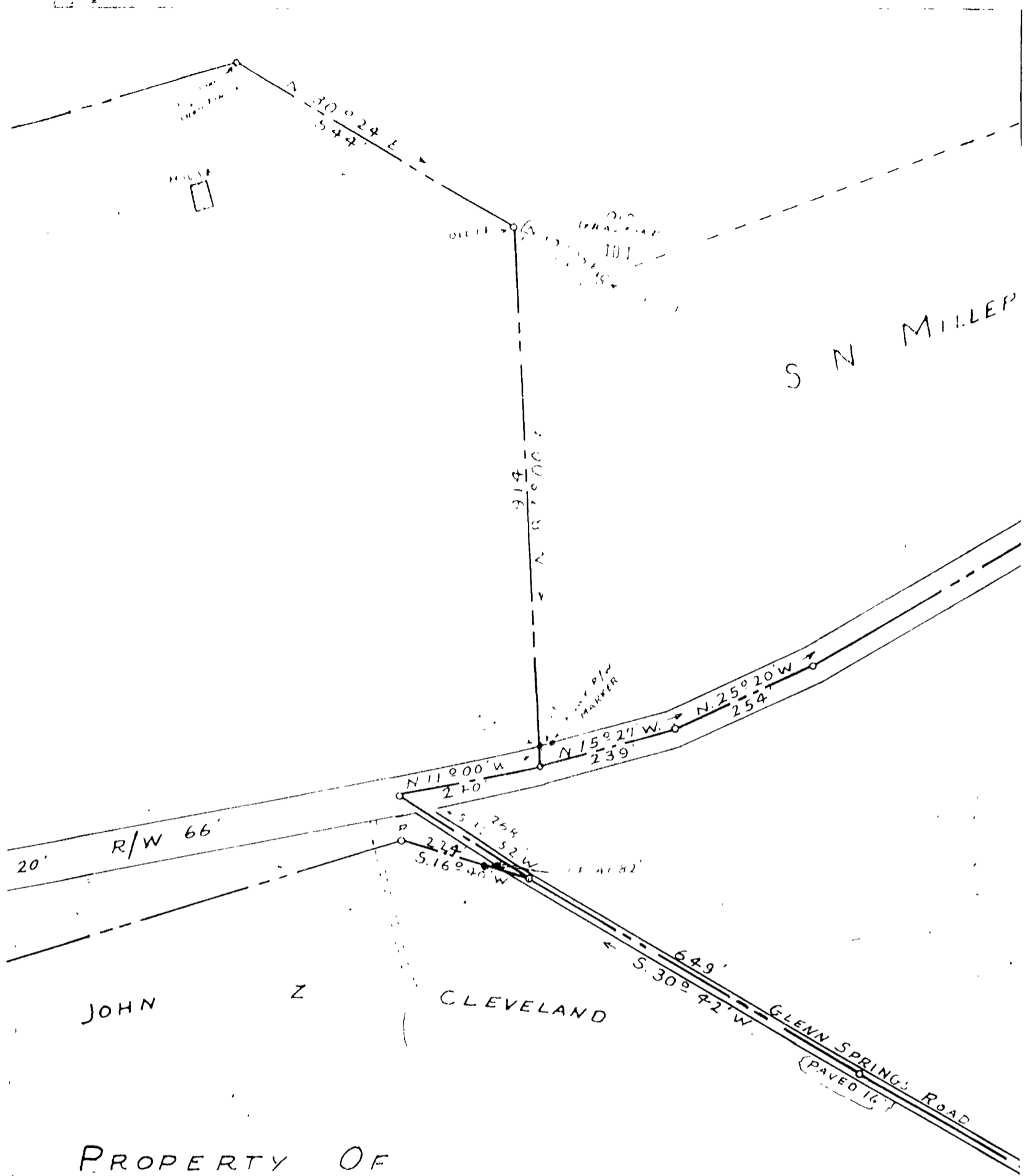


268



PROPERTY OF  
 STATE OF WM. L MILLER  
 1/2 MILES SOUTH OF PAULINE, S.C.  
 SPARTANBURG COUNTY, S.C.  
 A/C 1" = 200" SEPT. 5, 1944

GOOCH & TAYLOR  
 SURVEYORS  
 SPARTANBURG, S.C.

CHASES 1, 1-720 ; 3, 1-577 ; 4, B 594 & 7 x 361  
 SALES 1, 1-292