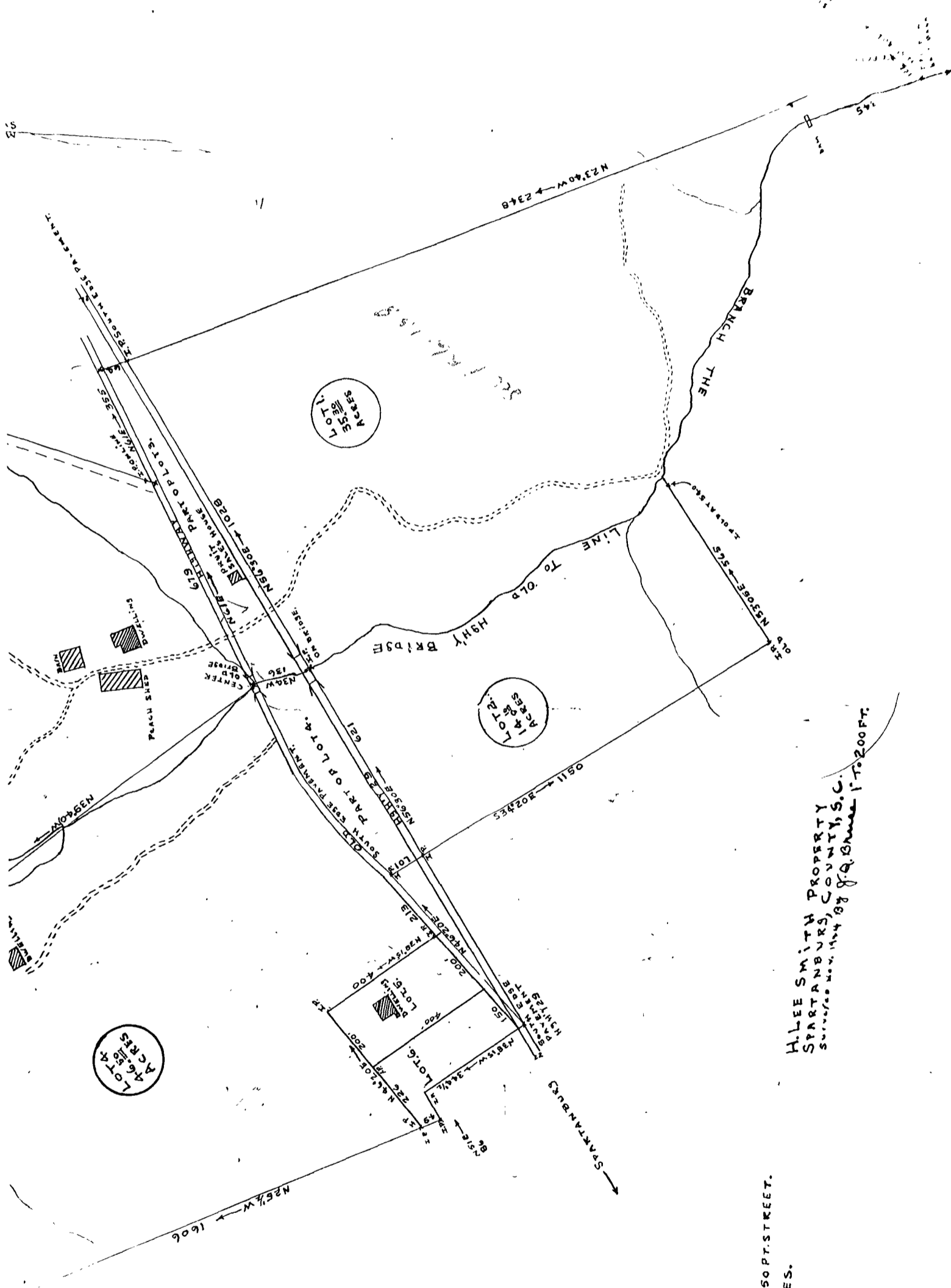


336



Recorded January 8th, 1945 at 4:38 P. M.
 NOTE: THIS PLAT REDUCED 40 %

- LOT 1-35.30 ACRES
- 2-14.10
- 3-34.10
- 4-46.50
- 5- 1.40
- 6- 1.50

0.50 - FOR 50 FT. STREET.
 0.50 - 19340 ACRES.

H. LEE SMITH PROPERTY
 SPARTANBURG, COUNTY, S.C.
 SURVEYED Nov. 11th 1878 by J. G. Shaw 17 to 200 FT.