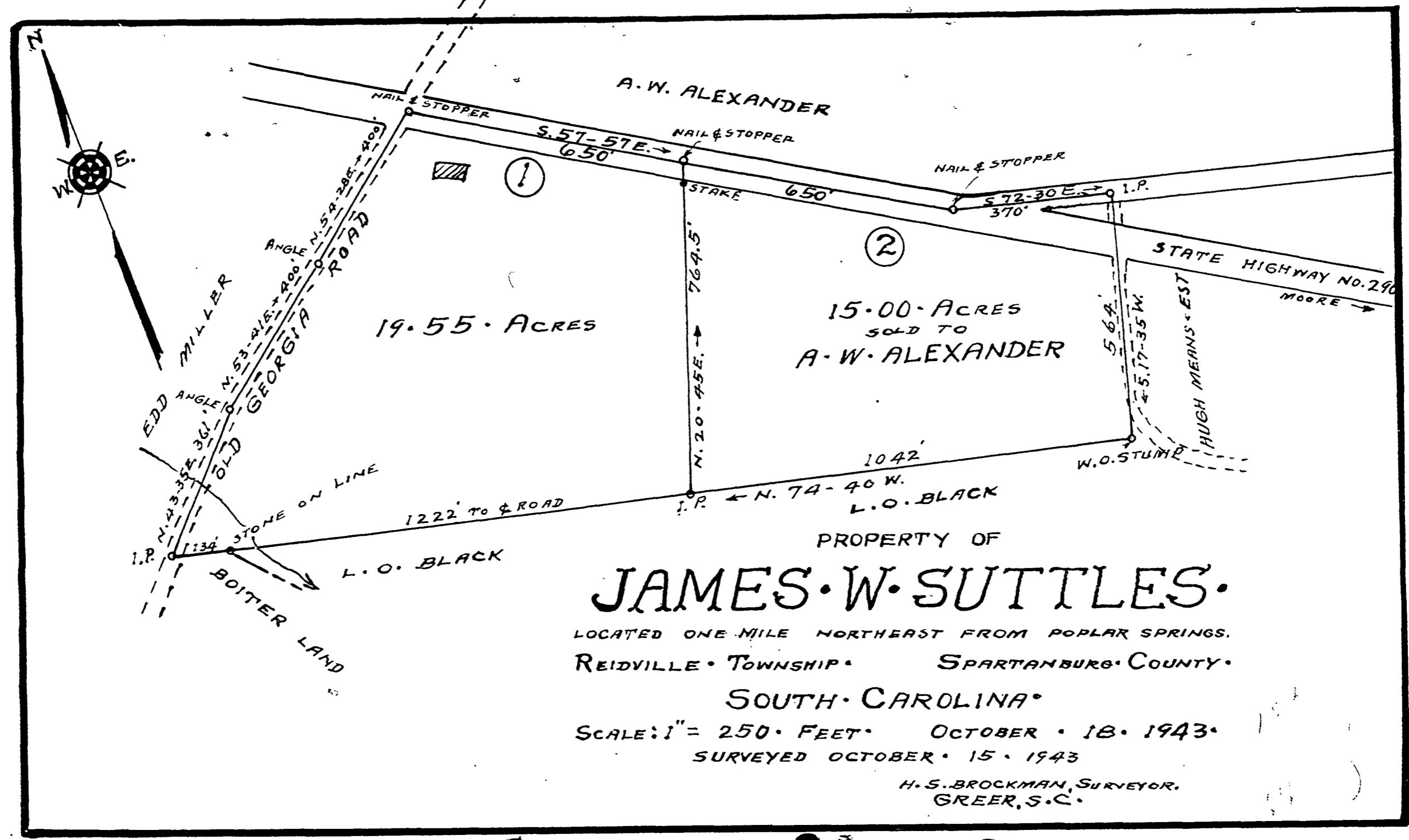


349



19.55 ACRES

15.00 ACRES  
SOLD TO  
A.W. ALEXANDER

# JAMES W. SUTTLES.

LOCATED ONE MILE NORTHEAST FROM POPLAR SPRINGS.  
REIDVILLE TOWNSHIP SPARTANBURG COUNTY  
SOUTH CAROLINA

SCALE: 1" = 250 FEET OCTOBER 18 1943  
SURVEYED OCTOBER 15 1943

H.S. BROCKMAN, SURVEYOR,  
GREER, S.C.