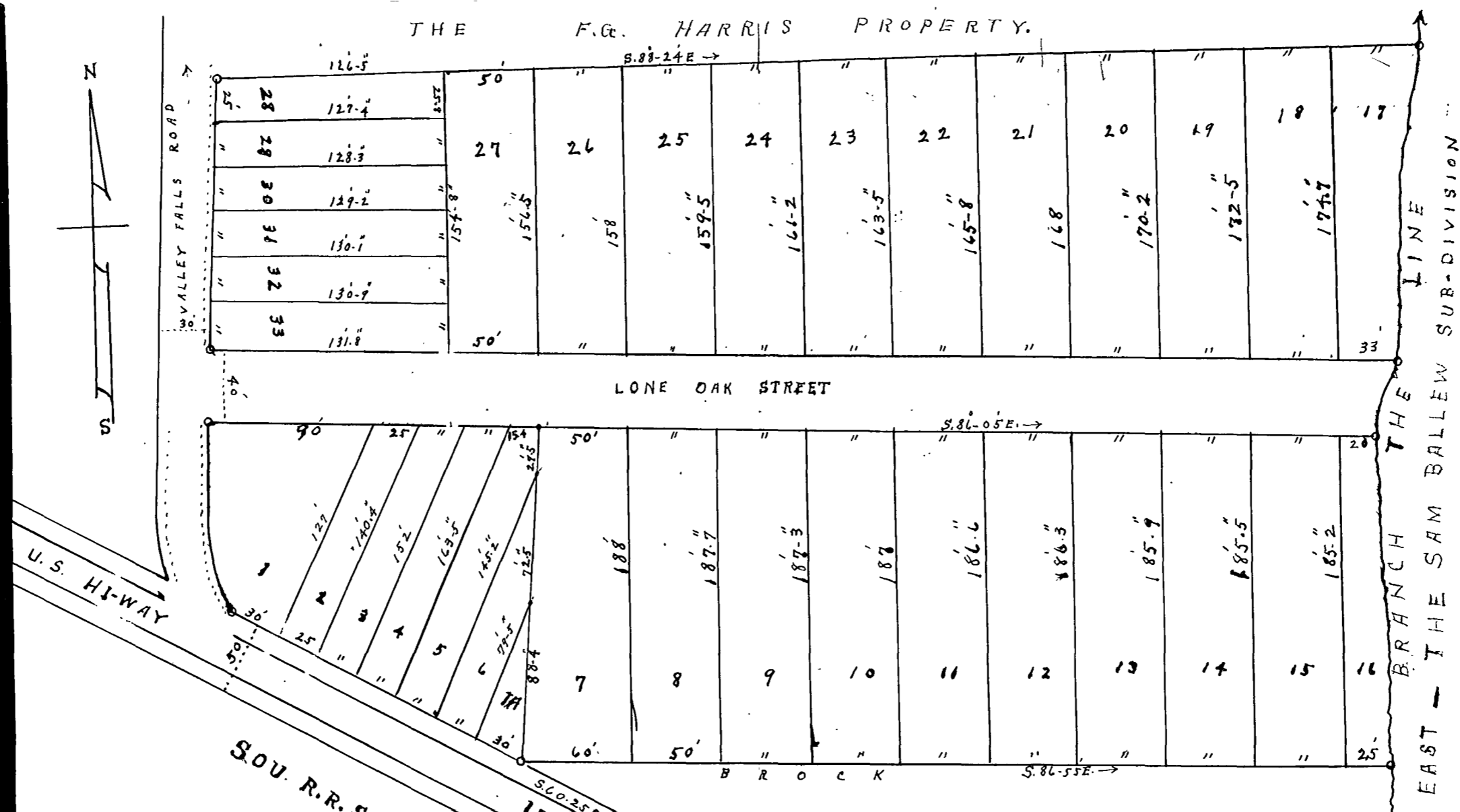


353



Note: All lot corners are marked by iron pipe stakes.

Scale: 1/2 inch = 50 feet

PROPERTY OF AND SUB-DIVISION FOR

B.B. CATE

LOCATED, OPPOSITE SOUTHERN R.R. SHOPS SPARTANBURG COUNTY, S.C.

Surveyed and sub-divided Nov. 18, 1944.

J. HATHINS, Surveyor

NOTE: THIS PLAT REDUCED 30 %

Recorded January 27th, 1945 at 10:46 A. M.