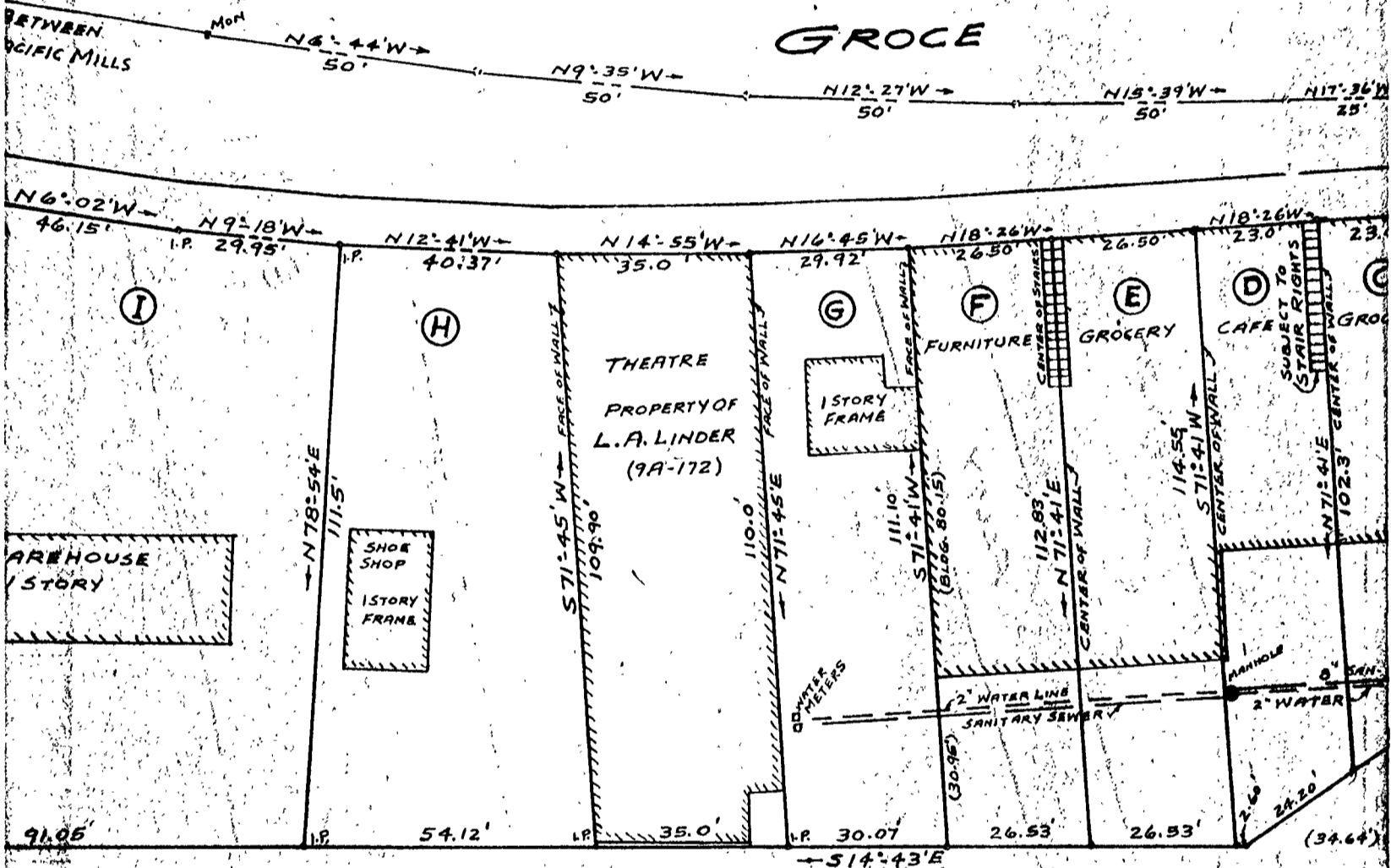


450

VILLAGE OF LYMAN  
(PACIFIC MILLS)

U. S. POST OFFICE LOT

GROCE



20' ALLEY

(443.6')

PROPERTY OF  
**A. B. GROCE EST.**  
 ESTATE PLAT NO. 27  
 AT LYMAN  
 SPARTANBURG COUNTY, S. C.  
 SCALE: 1" = 40' FEB. 24, 1944

GOOCH & TAYLOR  
 SURVEYORS  
 SPARTANBURG, S. C.

