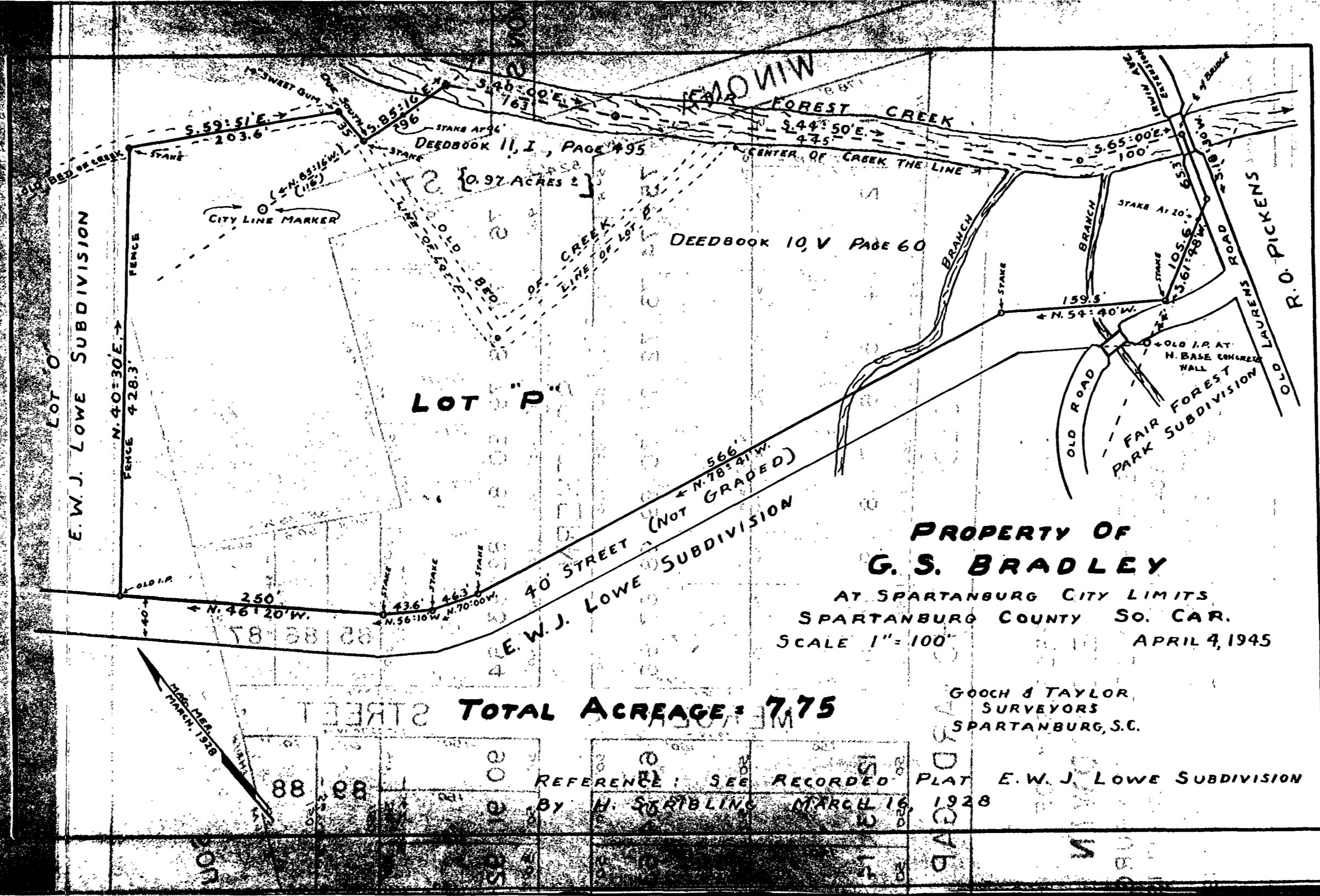


549



PROPERTY OF
G. S. BRADLEY
 AT SPARTANBURG CITY LIMITS
 SPARTANBURG COUNTY SO. CAR.
 SCALE 1" = 100' APRIL 4, 1945

TOTAL ACREAGE = 7.75

GOOCH & TAYLOR
 SURVEYORS
 SPARTANBURG, S.C.

REFERENCE: SEE RECORDED PLAT E. W. J. LOWE SUBDIVISION
 BY H. STUBBLING MARCH 16, 1928

