

444

PROPERTY OF  
**WHITNEY MILLS, INC.**  
 AT WHITNEY S.C.  
 SPARTANBURG CO., SOUTH CAROLINA

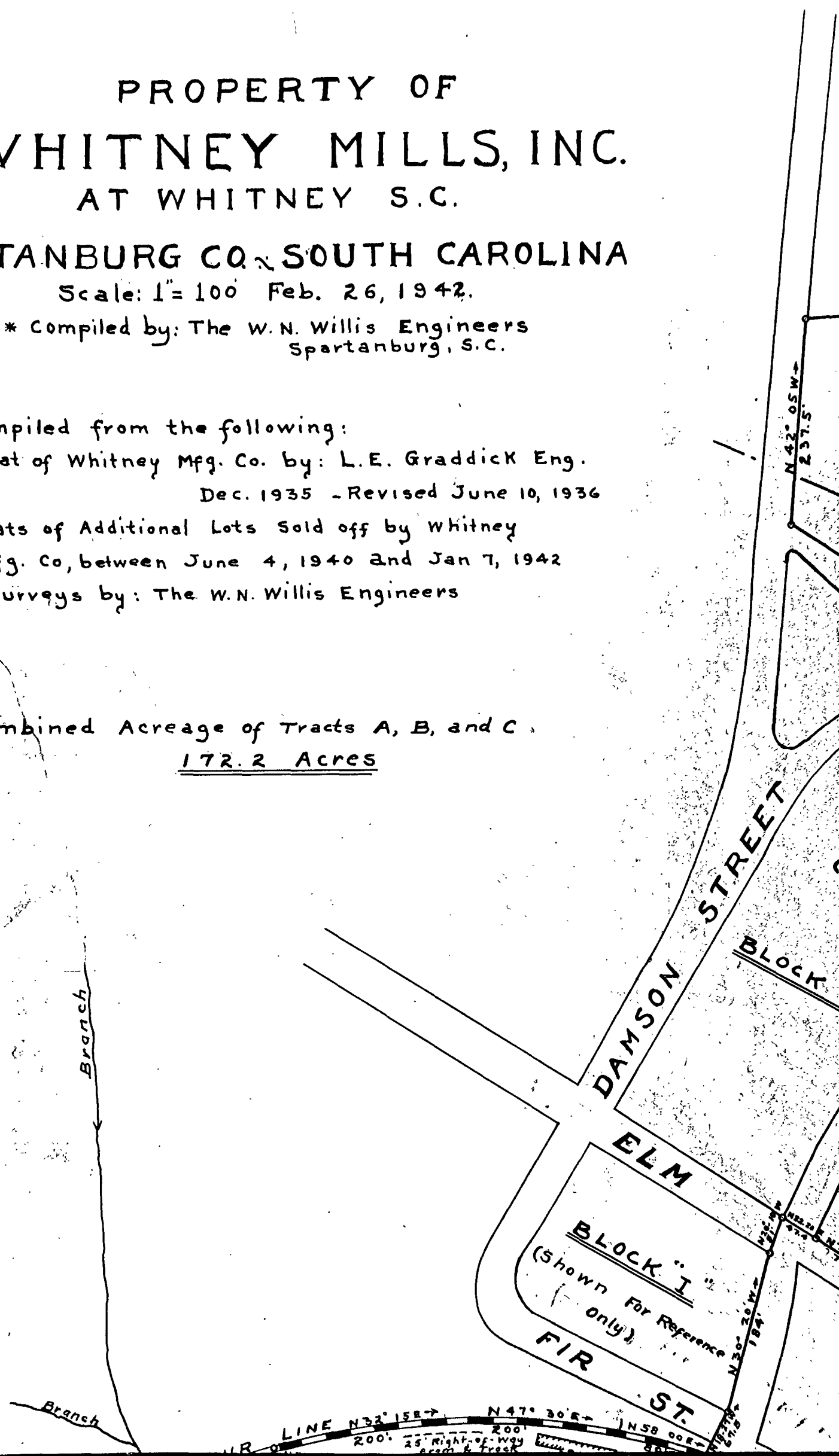
Scale: 1" = 100' Feb. 26, 1942.

\* Compiled by: The W.N. Willis Engineers  
Spartanburg, S.C.

\* Compiled from the following:

1. Plat of Whitney Mfg. Co. by: L.E. Graddick Eng.  
Dec. 1935 - Revised June 10, 1936
2. Plats of Additional Lots Sold off by Whitney  
Mfg. Co, between June 4, 1940 and Jan 7, 1942  
Surveys by: The W.N. Willis Engineers

Combined Acreage of Tracts A, B, and C.  
172.2 Acres



NOTE: THIS PLAT REDUCED 25%.