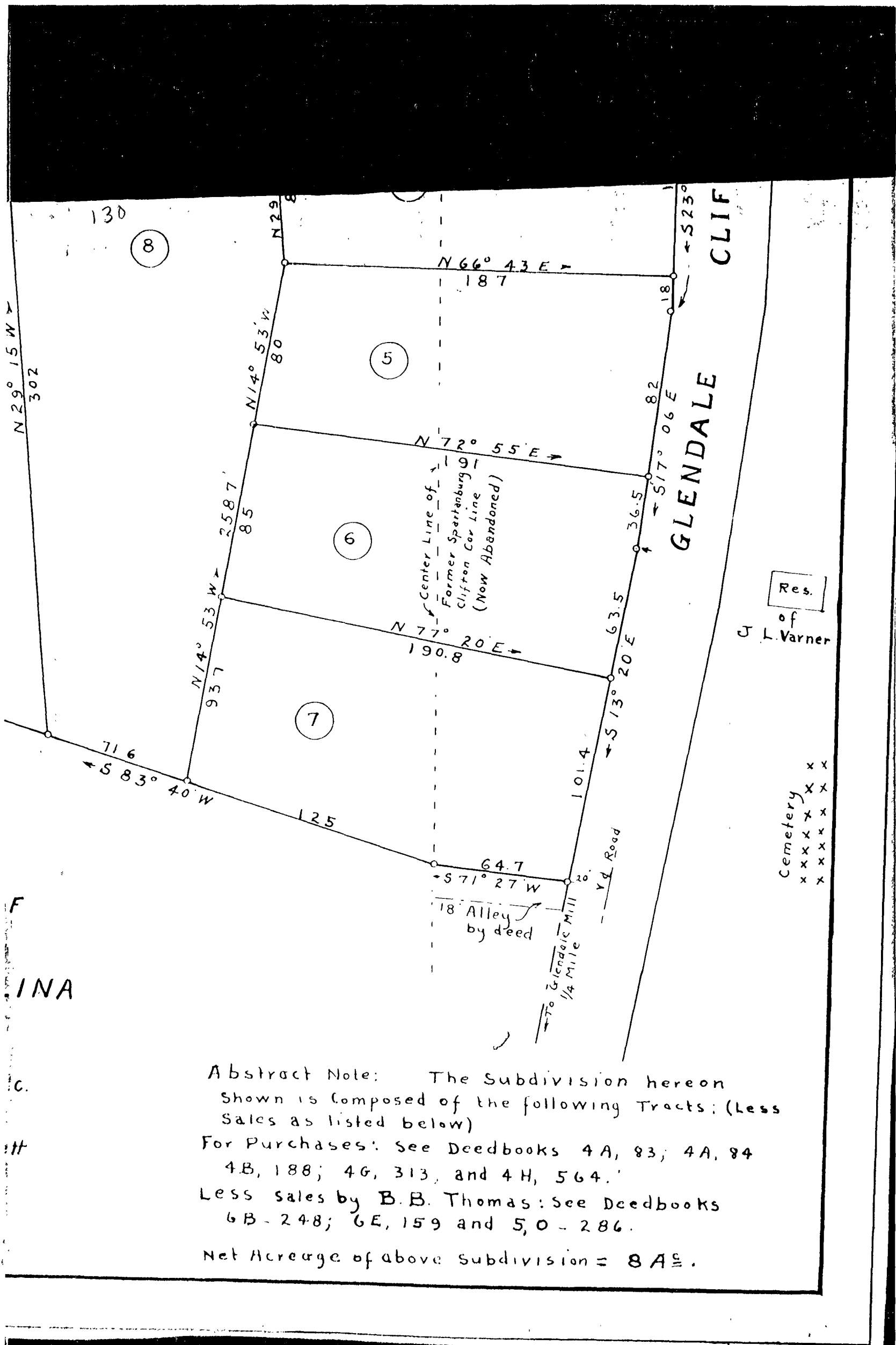


100



Abstract Note: The Subdivision hereon shown is composed of the following Tracts; (Less Sales as listed below)
 For Purchases: See Deedbooks 4A, 83; 4A, 84 4B, 188; 4G, 313, and 4H, 564.
 Less sales by B. B. Thomas: See Deedbooks 6B - 248; 6E, 159 and 5, 0 - 286.
 Net Acreage of above subdivision = 8 A^c.