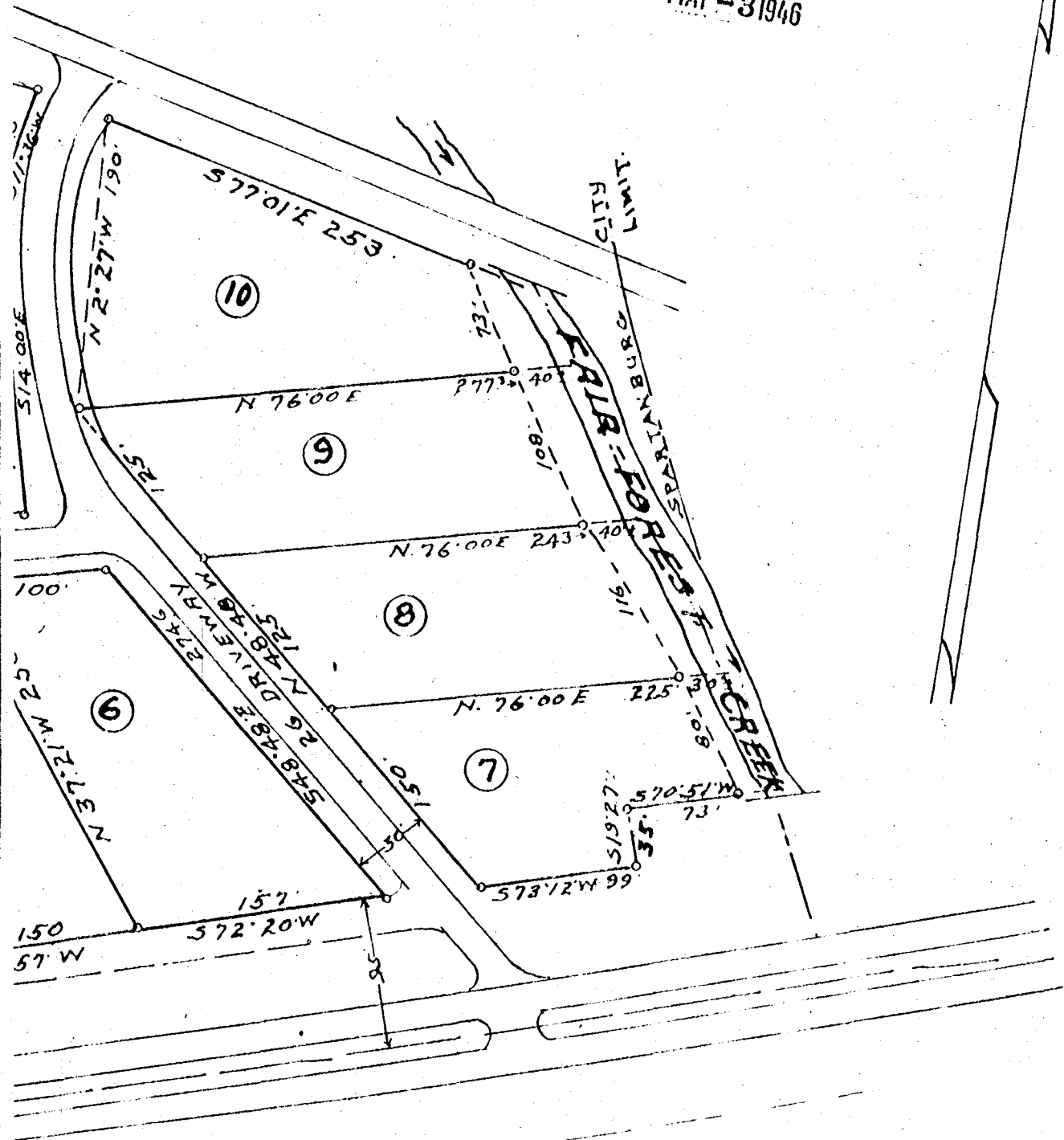


RECORDED



MAY - 3 1946



SUBDIVISION FOR
CONRAD P. CLEVELAND
 AT THE WESTERN CITY LIMITS OF
SPARTANBURG
 SPARTANBURG COUNTY - SC.
 Scale 1" = 100' - April 27, 1946
 W.N. WILLIS Engineers
 Spartanburg, SC