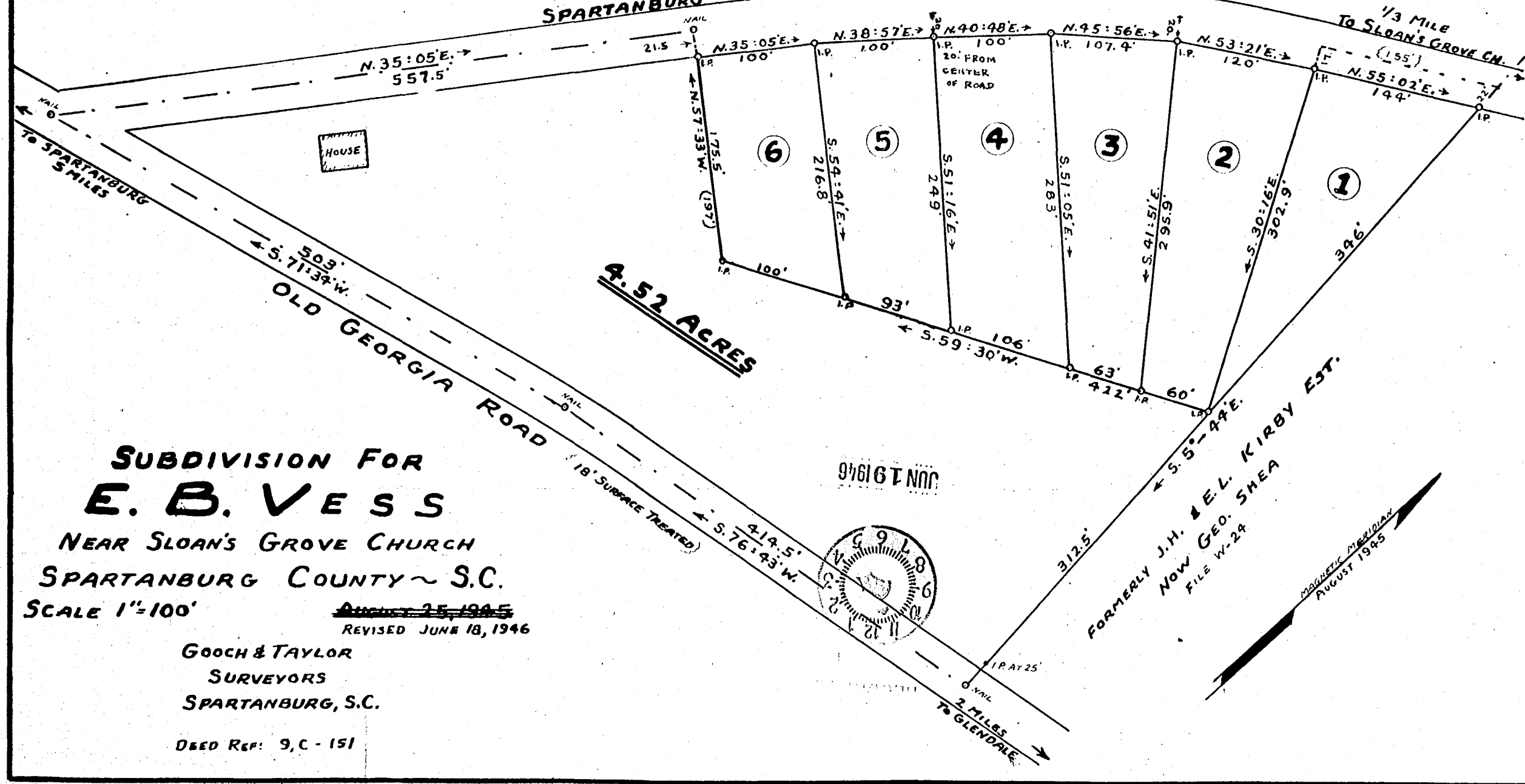


ANNIE H. BAGWELL

SPARTANBURG - CLIFTON ROAD (18' SURFACE TREATED)



4.52 ACRES

SUBDIVISION FOR
E. B. VESS
 NEAR SLOAN'S GROVE CHURCH
 SPARTANBURG COUNTY ~ S.C.
 SCALE 1"=100'

~~August 25, 1945~~
 REVISED JUNE 18, 1946
 GOOCH & TAYLOR
 SURVEYORS
 SPARTANBURG, S.C.
 D&ED Ref: 9, C - 151

FORMERLY J. H. & E. L. KIRBY EST.
 NOW GEO. SHEA
 FILE W-24

W-27