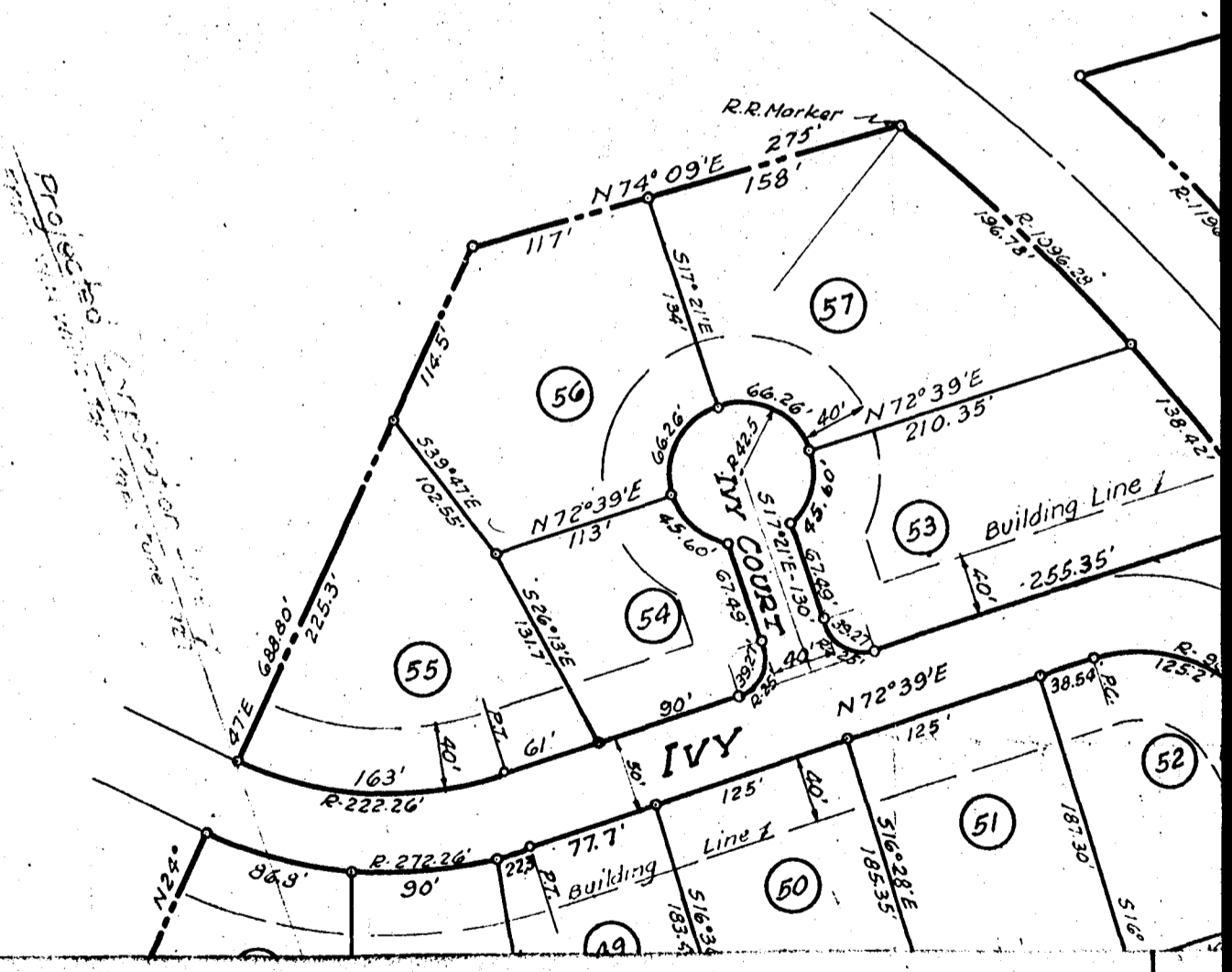


NOTE: The deeds to lots 9 & 14 shall carry reservations granting easements for sanitary sewer mains to connect with the 24" sanitary interceptor sewer line. The deeds to lots 10, 11, 12 & 13 shall carry reservations granting easements for making sanitary sewer house connections with the 24" sanitary sewer line across the first named lots. The deeds of lots 1, 2, 6, 7, 8, 40 & 52 shall carry reservations granting easements for sanitary sewer mains to connect with the 24" sanitary interceptor sewer line at Ivy Street. For the location of 8" sanitary sewer mains and the 24" sanitary interceptor sewer line, see "Map of Chapman and Jackson showing streets and utilities", dated November 1910, number of 6200, as made by The Harwood Beebe Company, Mobile, Alabama, and Spartanburg, S. C.



Note: this plat reduced 10%.