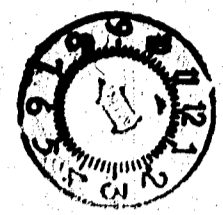


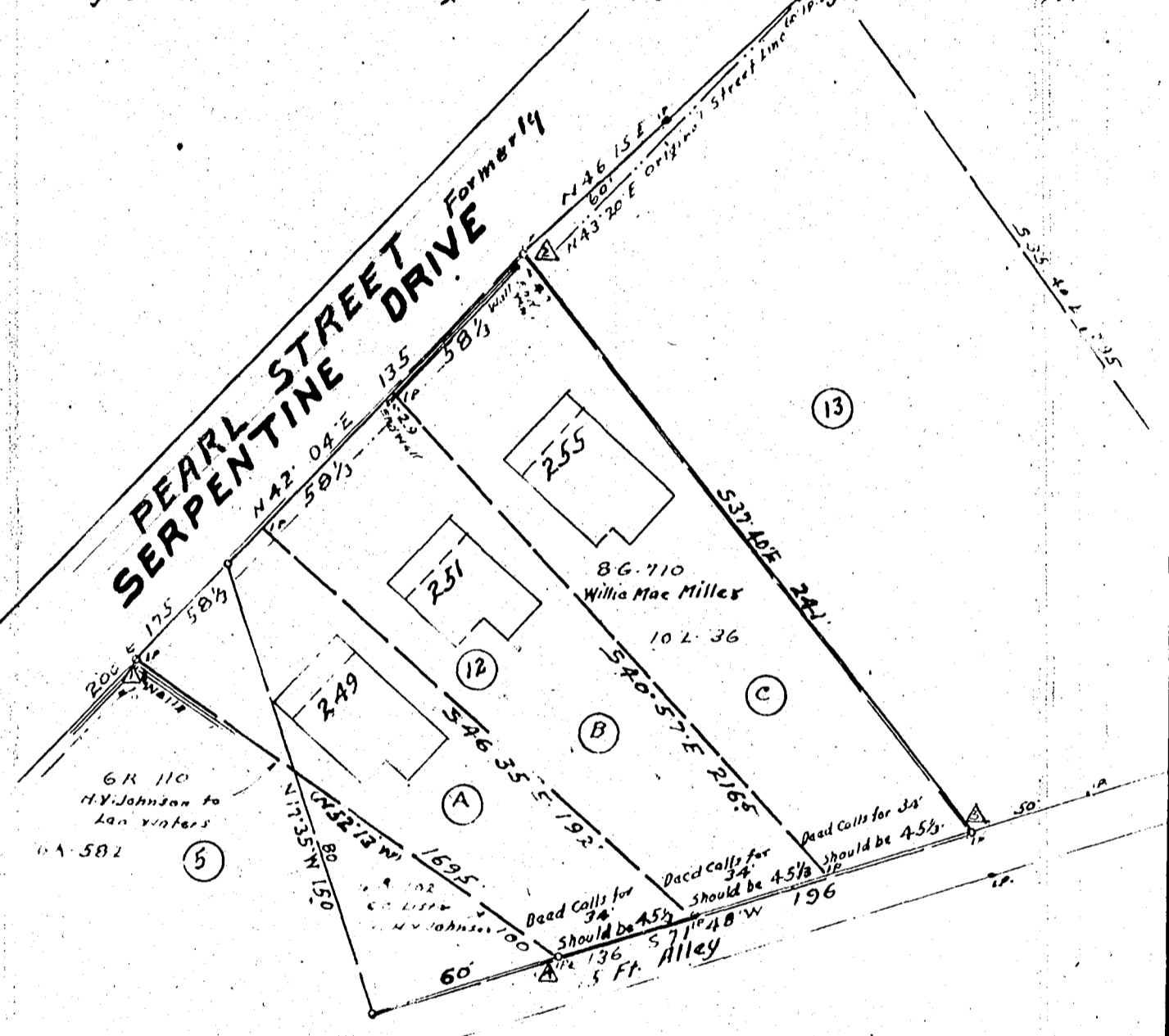
OCT 19 1946



RECORDED

LOT No 12 J.H. EVINS Est. Sub. See Plat Book 6-114-115

Corners 1, 2, 3, 4 McDowall & Hammond to S.G. Hawkins 6V-417
Lots A, B, C, La Roy Moore, Master to H.L. Bomer 7L 173, States Lots 1/3 of above Lot.
This Lot 175' front, 136' back was divided into 3 parts, Front each 50 1/3'
and back 136', 3 parts should be 45 1/3' ft, but the back 136' was divided
by 4 and 34 ft noted through error. Back should be 45 1/3' ft as called for 1/3.



See Dead Book 8U, page 58 - Lots A & B

SURVEY & ABSTRACT PLAT FOR
T.W. & A.B. WOODWORTH
in the city of
SPARTANBURG
SPARTANBURG CO. S.C.
Scale 1" = 50' Sept 30, 1946
W.N. WILLIS Engineers
Spartanburg S.C.

Field
Plat
C.A.
M.G.H.
W.N.W.