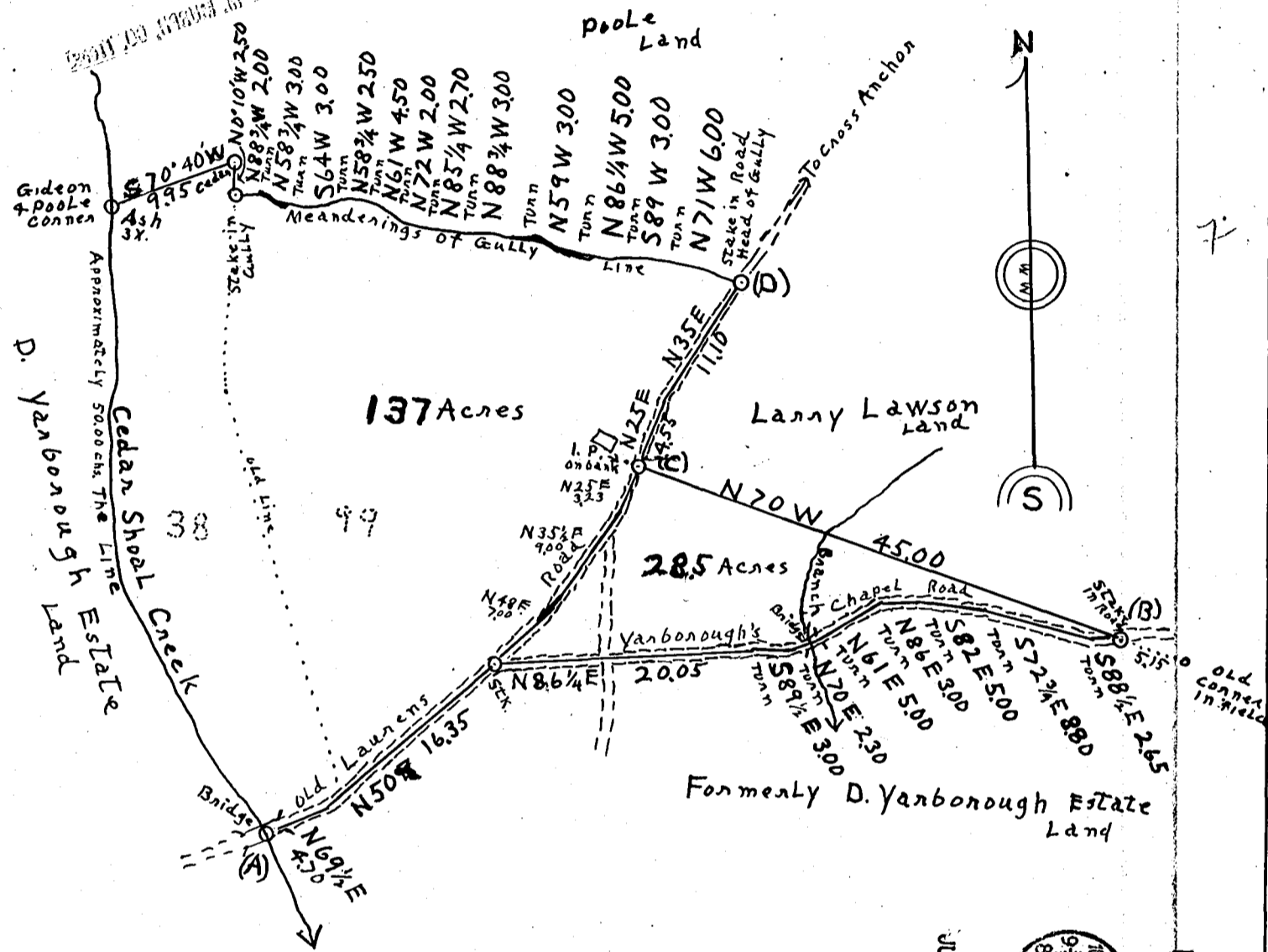


WEST 1/2 DIST 1200 BUS 2934  
BE RECORDED IN PLAT



137 Acres

28.5 Acres

# PLAT

OF  
 Land surveyed at the request of W. D. Lance, and now owned by C. E. Lance. It is situated about 2 miles South West of Cross Anchor, Spartanburg County, South Carolina, and is known as part of the Cox and Vanbonough tracts. The Lines from (A) to (B) to (C) to (D) were actually surveyed by me; the other Lines were drawn from Plat of Cox tract, made by Curtis S. Anderson, Surveyor, Nov. 25, 1929, and from a deed description of a parcel of Lot # 7 of the Vanbonough tract, as surveyed by H. Stibling, C. E. Sept. 1932. Date of this survey and plat, June 24, 1948.  
*Claude E. Sparks*  
 Surveyor.

JUL - 8 1948



RECORDED

This tract was surveyed as directed.  
 Signed:

(Total 165.5 Acres)

Scale: - 1" = 10 chs.

Note: this plat reduced 20%.