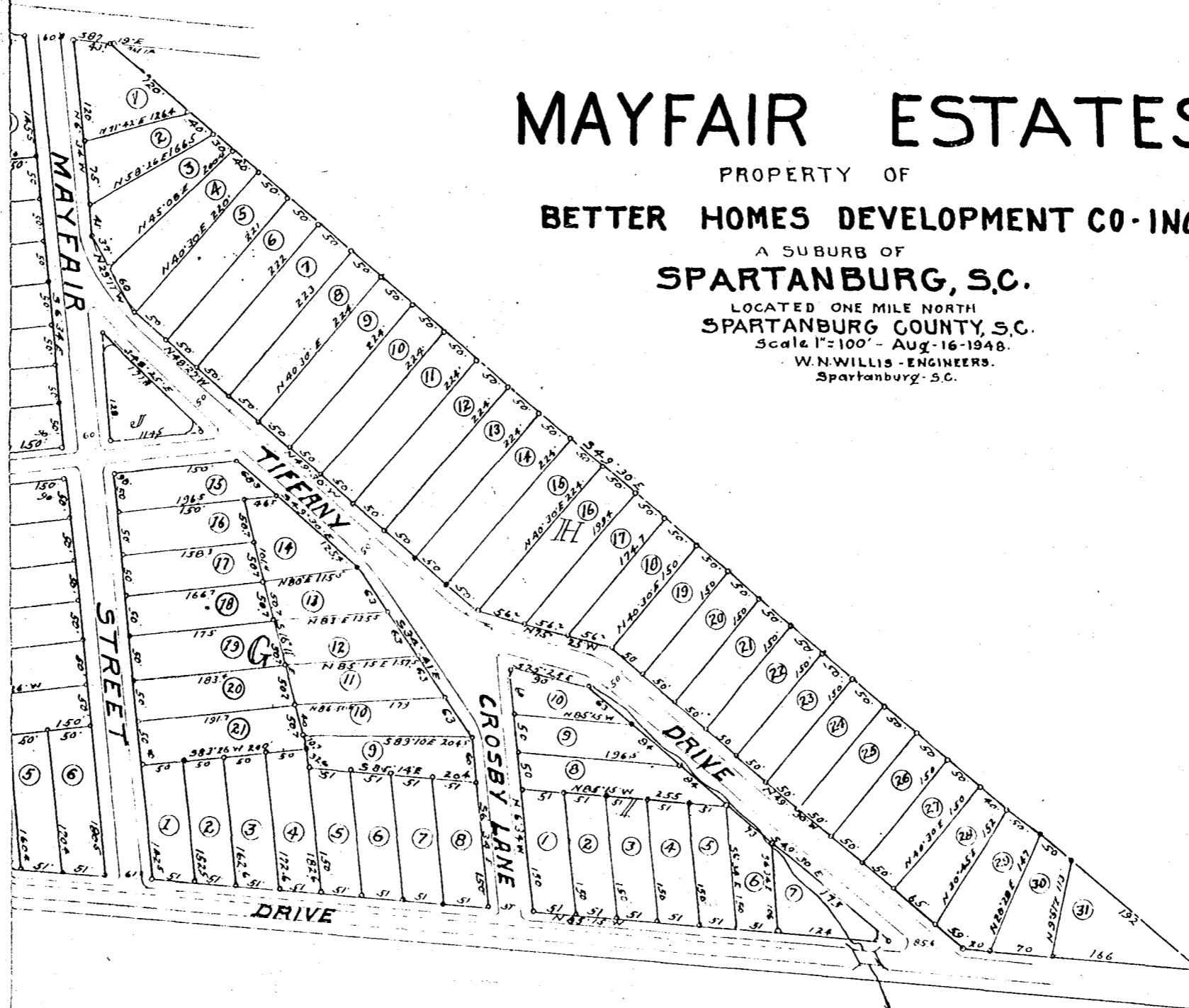


NOTE: This plat reduced 40%



# MAYFAIR ESTATES

PROPERTY OF

## BETTER HOMES DEVELOPMENT CO-ING.

A SUBURB OF

### SPARTANBURG, S.C.

LOCATED ONE MILE NORTH  
SPARTANBURG COUNTY, S.C.

Scale 1"=100' - Aug-16-1948.

W.N.WILLIS-ENGINEERS.  
Spartanburg-S.C.