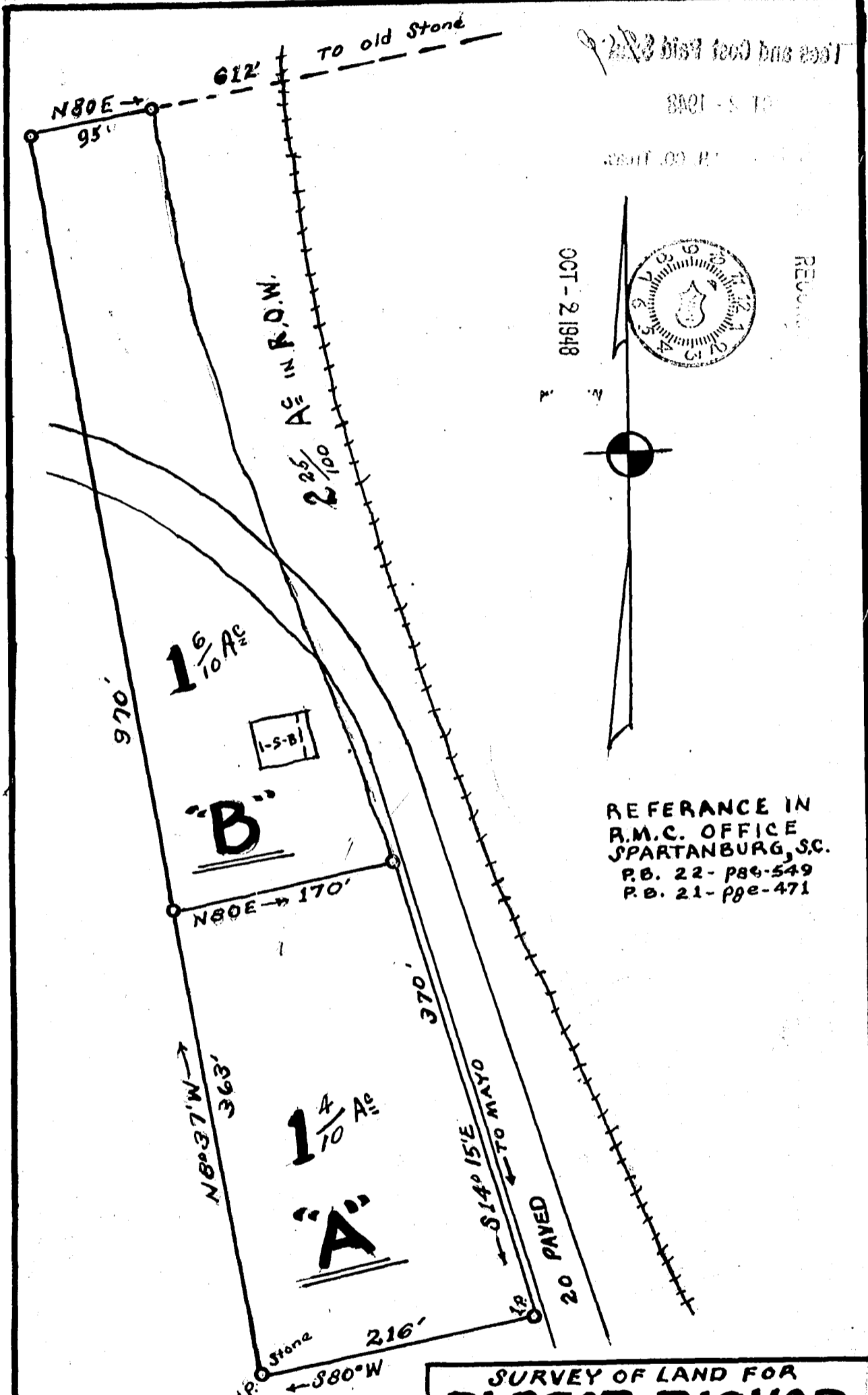


257

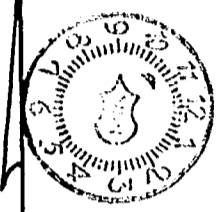


ELBERT BISHOP

8021 - S TO

2001 00 P.

OCT - 2 1948



RECORD

REFERENCE IN
R.M.C. OFFICE
SPARTANBURG, S.C.
P.B. 22 - pgs-549
P.B. 21 - pgs-471

I CERTIFY THAT THE ABOVE
LOT "A" IS CORRECT.

Boyd L. Shook
NOTARY PUBLIC FOR S.C.

SURVEY OF LAND FOR
ELBERT BISHOP
NEAR MAYO, S.C.
SPARTANBURG COUNTY
SCALE 1" = 100' SEPT. 1948
B.L. SHOOK - LAND SURVEYOR
SPARTANBURG, S.C.