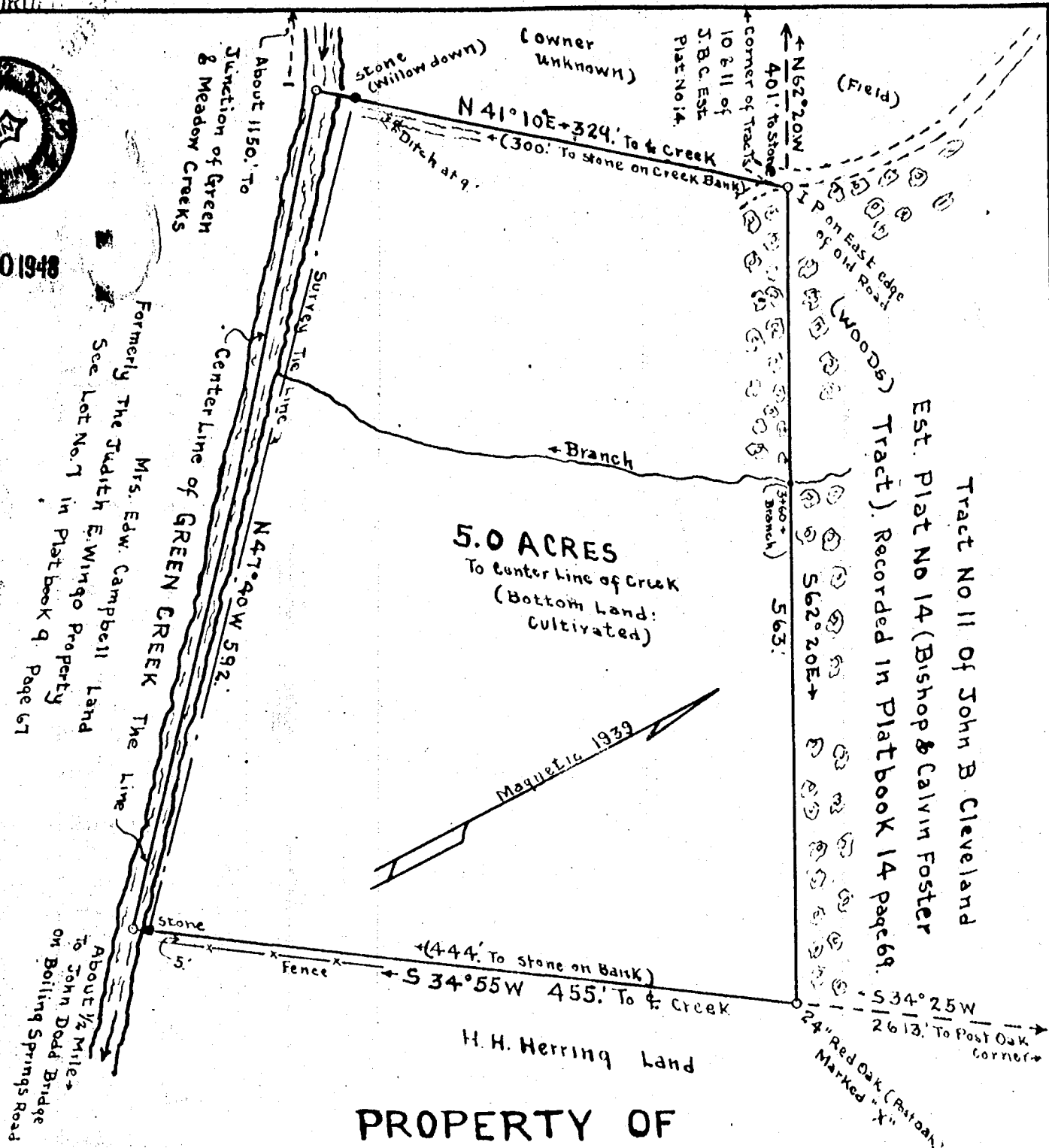


RECORD



OCT 20 1948



PROPERTY OF
JOHN B CLEVELAND EST
 J E BISHOP TRACT

LOCATED ON GREEN CREEK 1/2 MILE N-W OF JOHN DODD BRIDGE
 BEECH SPRINGS TWP, CAMPTON SCHOOL DIST

SPARTANBURG CO., SOUTH CAROLINA
 ESTATE PLAT NO. 24

SCALE: 1"=100. v APRIL 3 1939

W.N.WILLIS ENGINEERS
 SPARTANBURG SC.

Reference: Deed book 6Y-709,
 The Above Tract Being Lot No. 8 of Former
 "Judith E. Wingo" Land As Recorded in Platbook 9, Page 67.

Field: Joseph S. Taylor