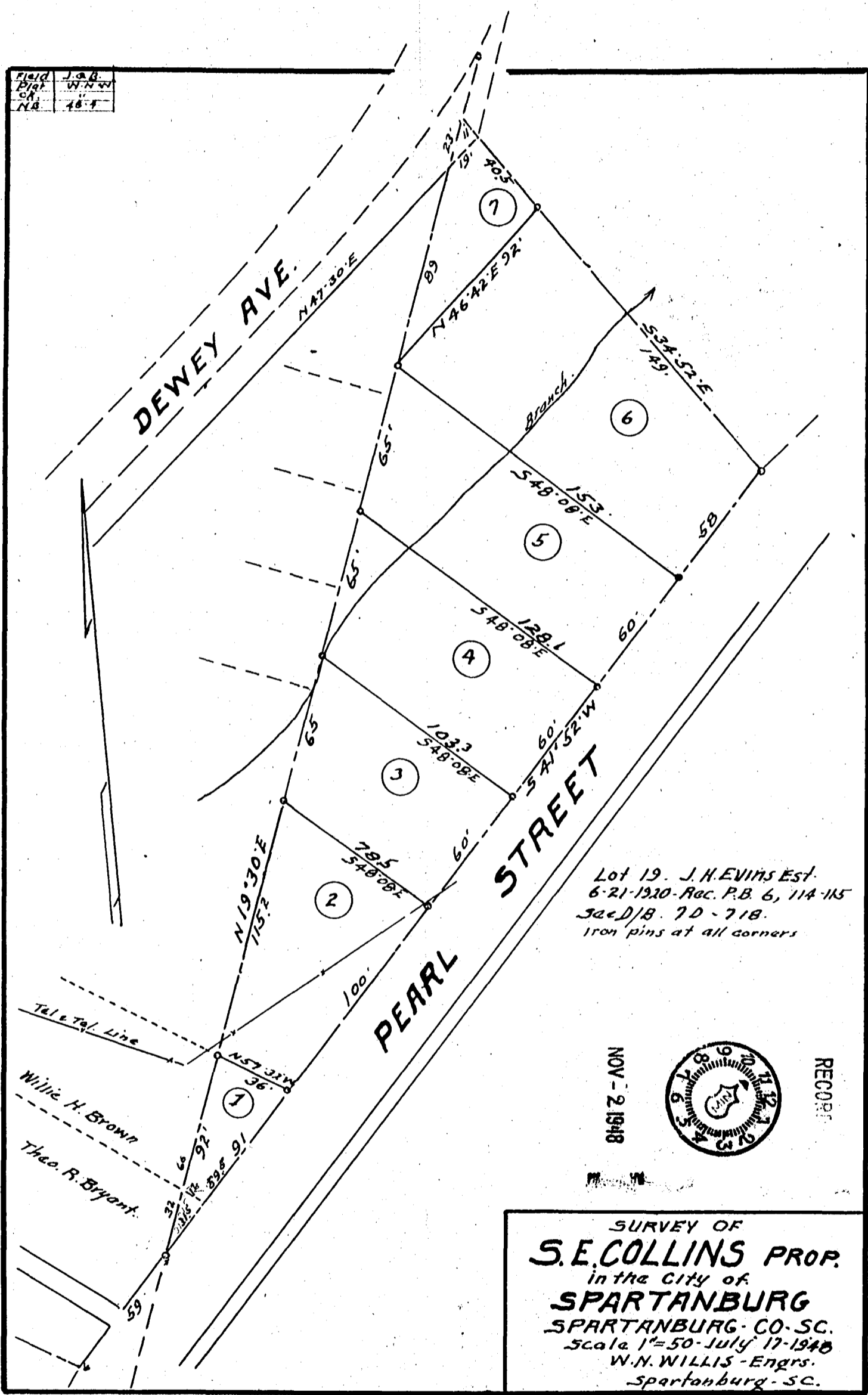


322

Field	J. S. B.
Plat	W. N. W.
CR	
N.B.	48-4



Lot 19. J. H. EVINS Est.  
6-21-1920-Rec. P.B. 6, 114-115  
Sec. D/18. 7D-718.  
Iron pins at all corners

NOV - 2 1948



RECORDED

SURVEY OF  
**S. E. COLLINS PROP.**  
in the City of  
**SPARTANBURG**  
SPARTANBURG - CO. - SC.  
Scale 1" = 50 - July 17-1940  
W. N. WILLIS - Engrs.  
Spartanburg - SC.