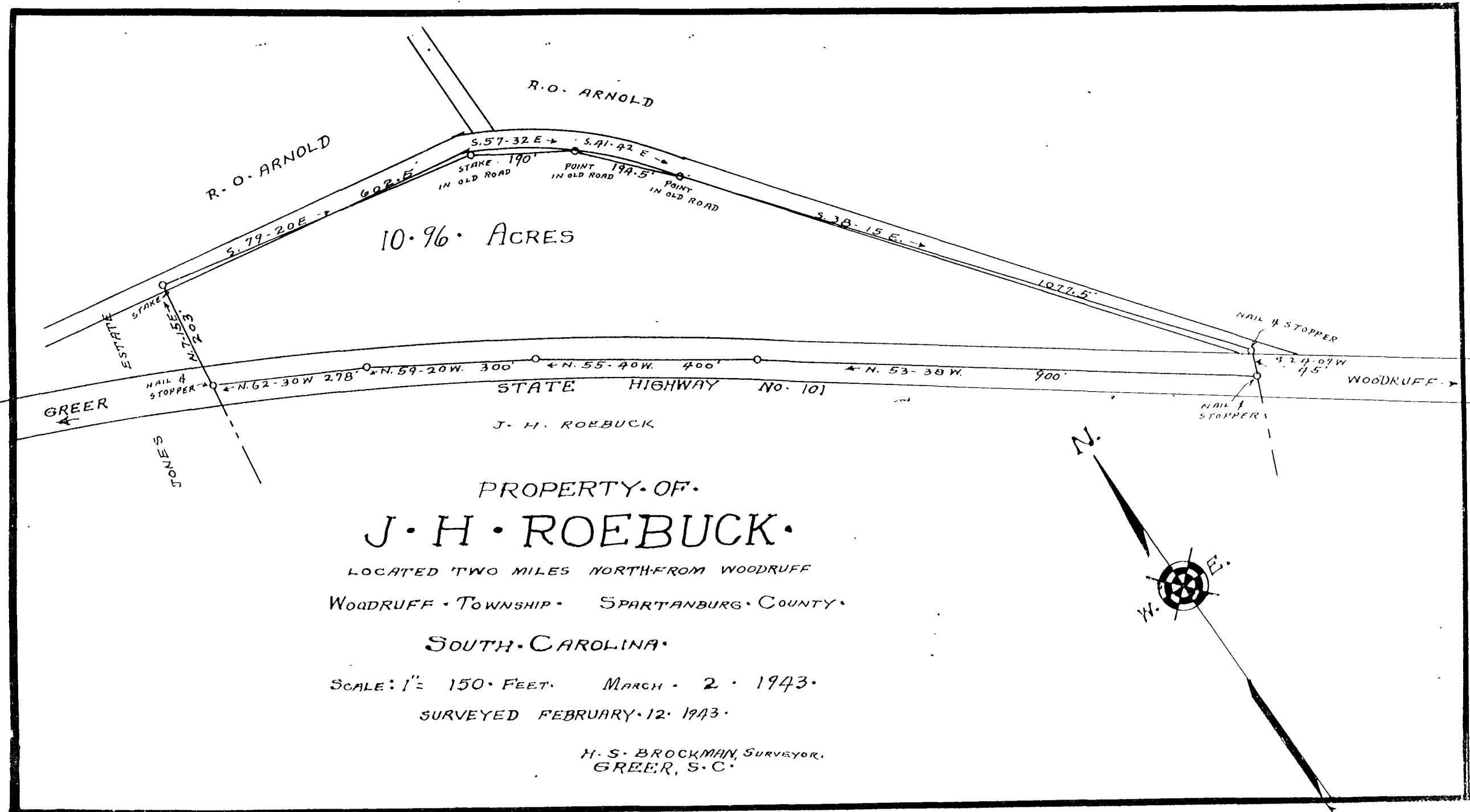


Note: this plat filed for record November 8th, 1948 at 10:30 A. M.  
This plat reduced 25%.



PROPERTY OF  
**J. H. ROEBUCK.**  
 LOCATED TWO MILES NORTH FROM WOODRUFF  
 WOODRUFF TOWNSHIP SPARTANBURG COUNTY  
 SOUTH CAROLINA  
 SCALE: 1" = 150 FEET. MARCH 2 1943  
 SURVEYED FEBRUARY 12 1943

H. S. BROCKMAN, SURVEYOR,  
 GREER, S. C.

0333