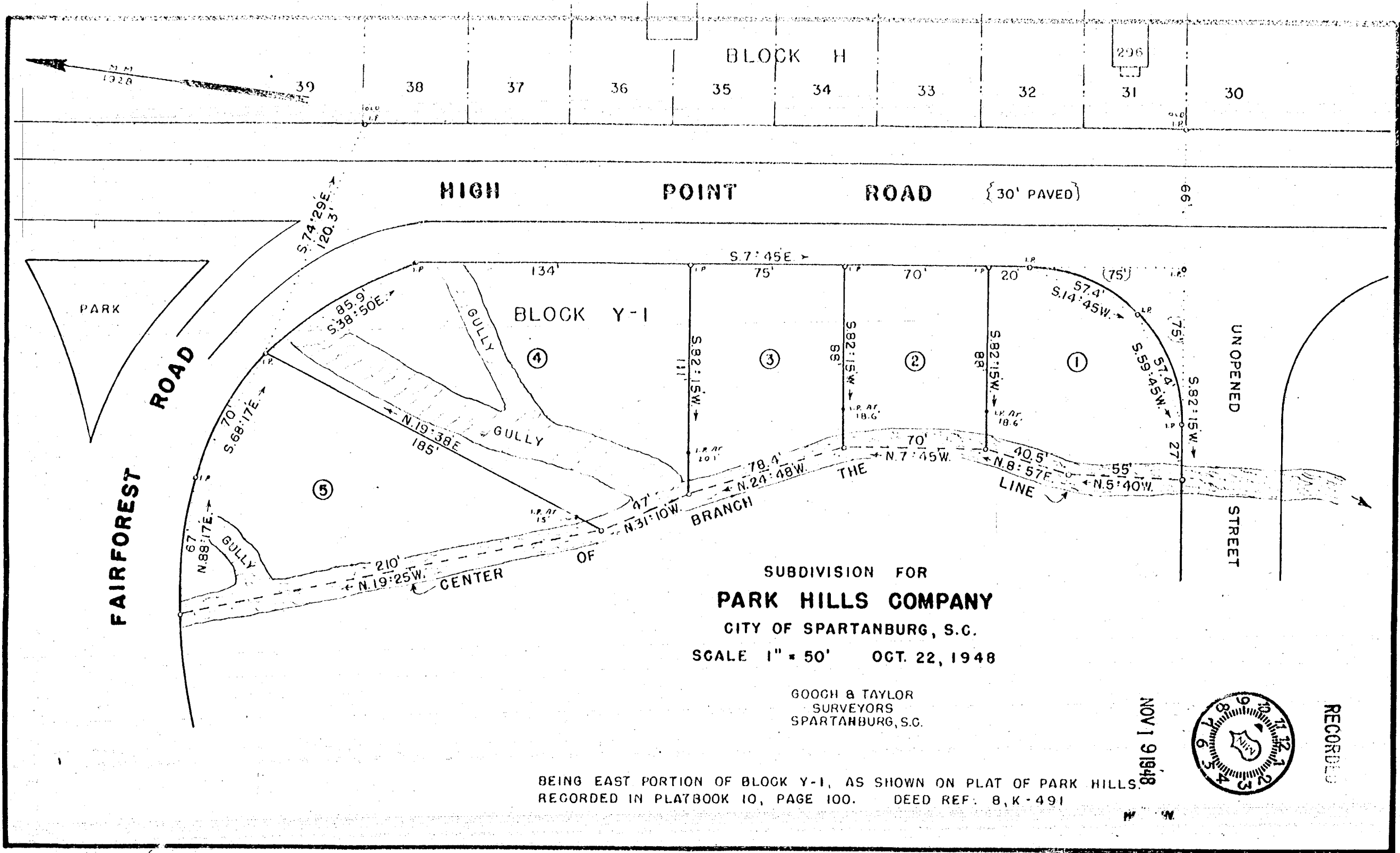


353



SUBDIVISION FOR
PARK HILLS COMPANY
 CITY OF SPARTANBURG, S.C.
 SCALE 1" = 50' OCT. 22, 1948

GOOCH & TAYLOR
 SURVEYORS
 SPARTANBURG, S.C.

NOV 19 1948



RECORDED

BEING EAST PORTION OF BLOCK Y-1, AS SHOWN ON PLAT OF PARK HILLS,
 RECORDED IN PLATBOOK 10, PAGE 100. DEED REF. B, K-491

C-89