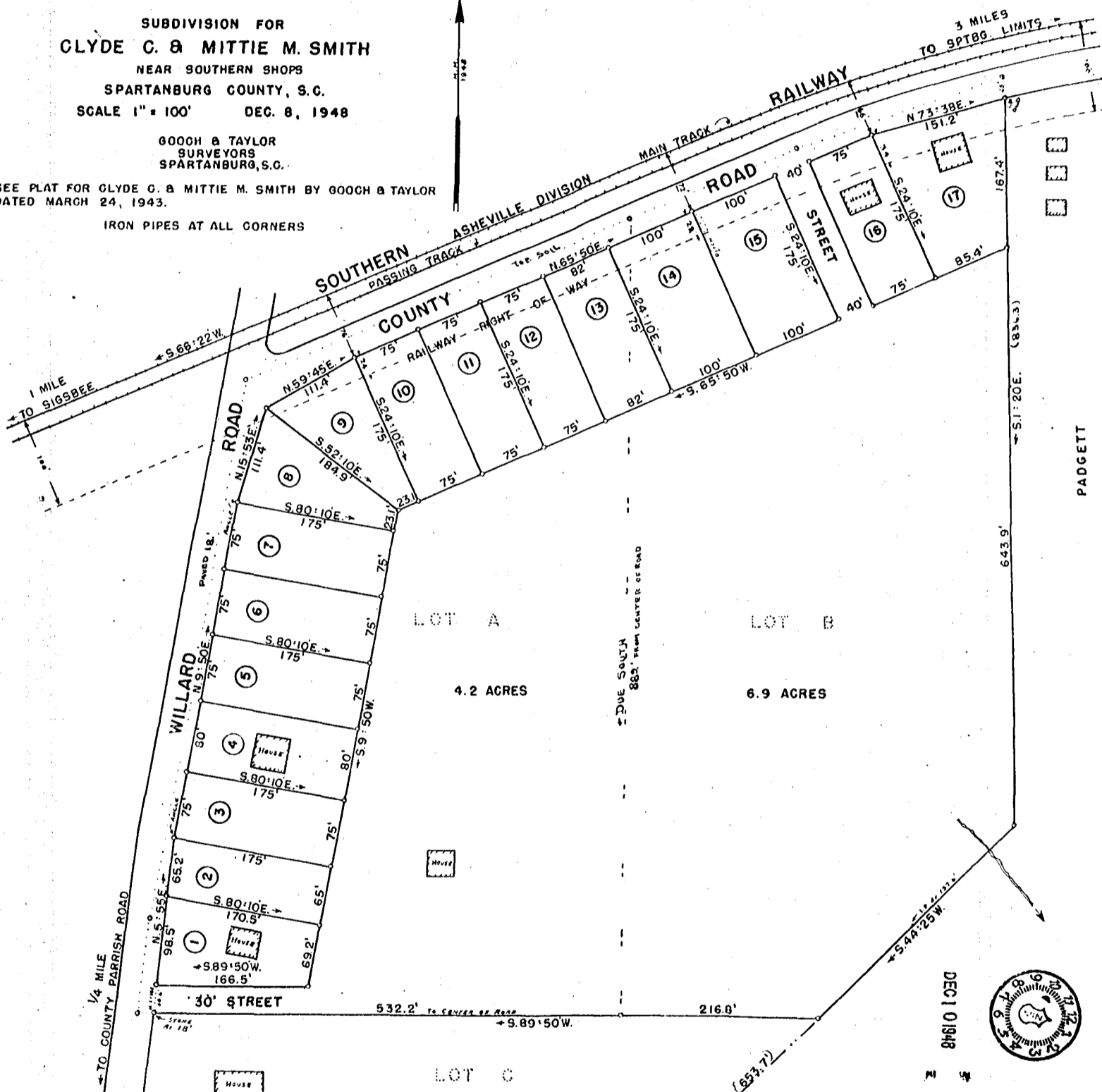


SUBDIVISION FOR
CLYDE C. & MITTIE M. SMITH
NEAR SOUTHERN SHOPS
SPARTANBURG COUNTY, S.C.
SCALE 1" = 100' DEC. 8, 1948

GOOCH & TAYLOR
SURVEYORS
SPARTANBURG, S.C.

SEE PLAT FOR CLYDE C. & MITTIE M. SMITH BY GOOCH & TAYLOR
DATED MARCH 24, 1943.

IRON PIPES AT ALL CORNERS



DEC 10 1948



RECORDED

M - 199

M - 309

NOTE: This plat reduced 35%