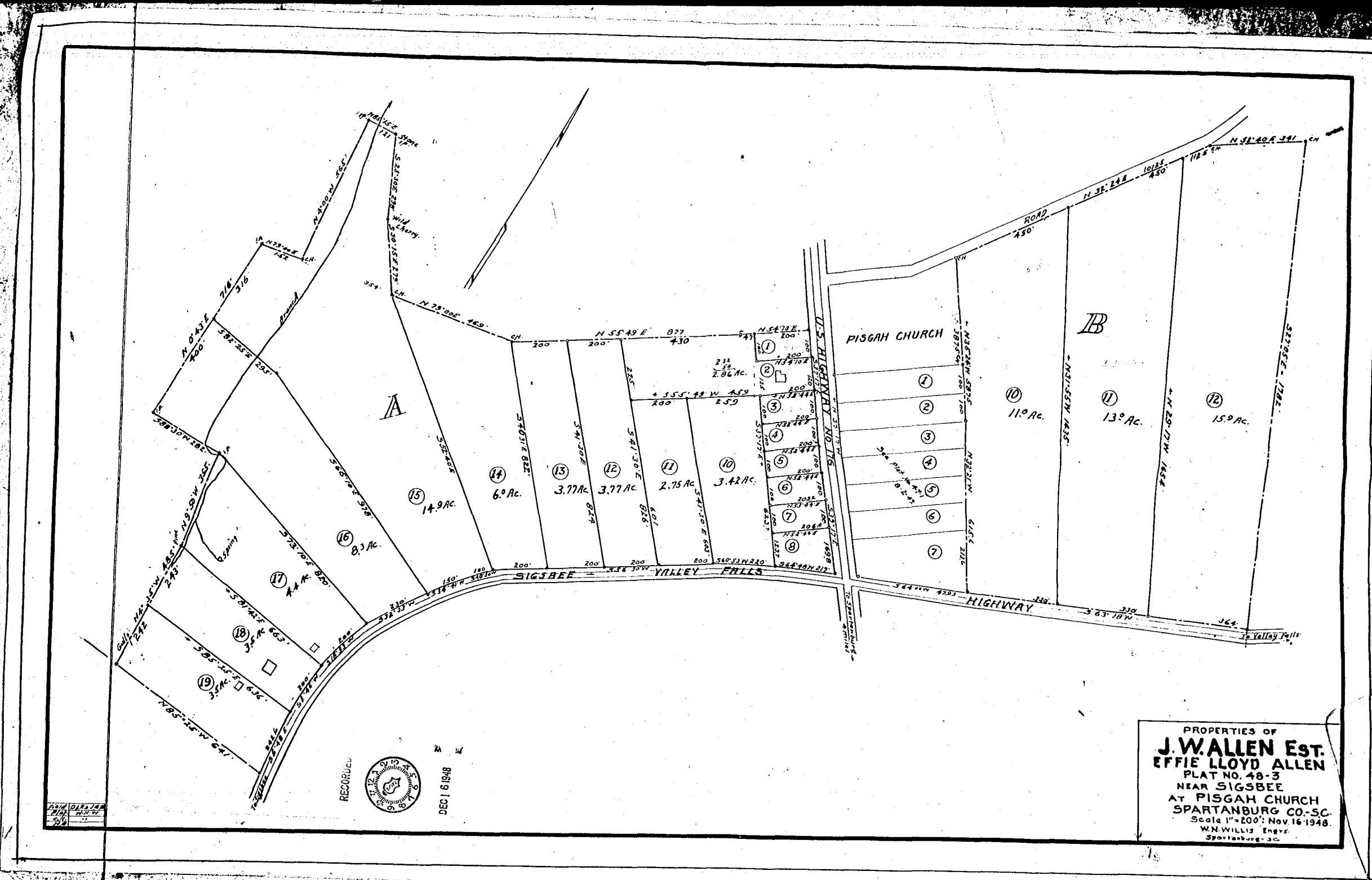



Note: this plat reduced 50%.



PROPERTIES OF
J. W. ALLEN EST.
 EFFIE LLOYD ALLEN
 PLAT NO. 48-3
 NEAR SIGSBEE
 AT PISGAH CHURCH
 SPARTANBURG CO.-SC.
 Scale 1"=200'; Nov. 16, 1948.
 W.N. WILLIS, Engr.
 Spartanburg, S.C.

RECORDED

 DEC 16 1948