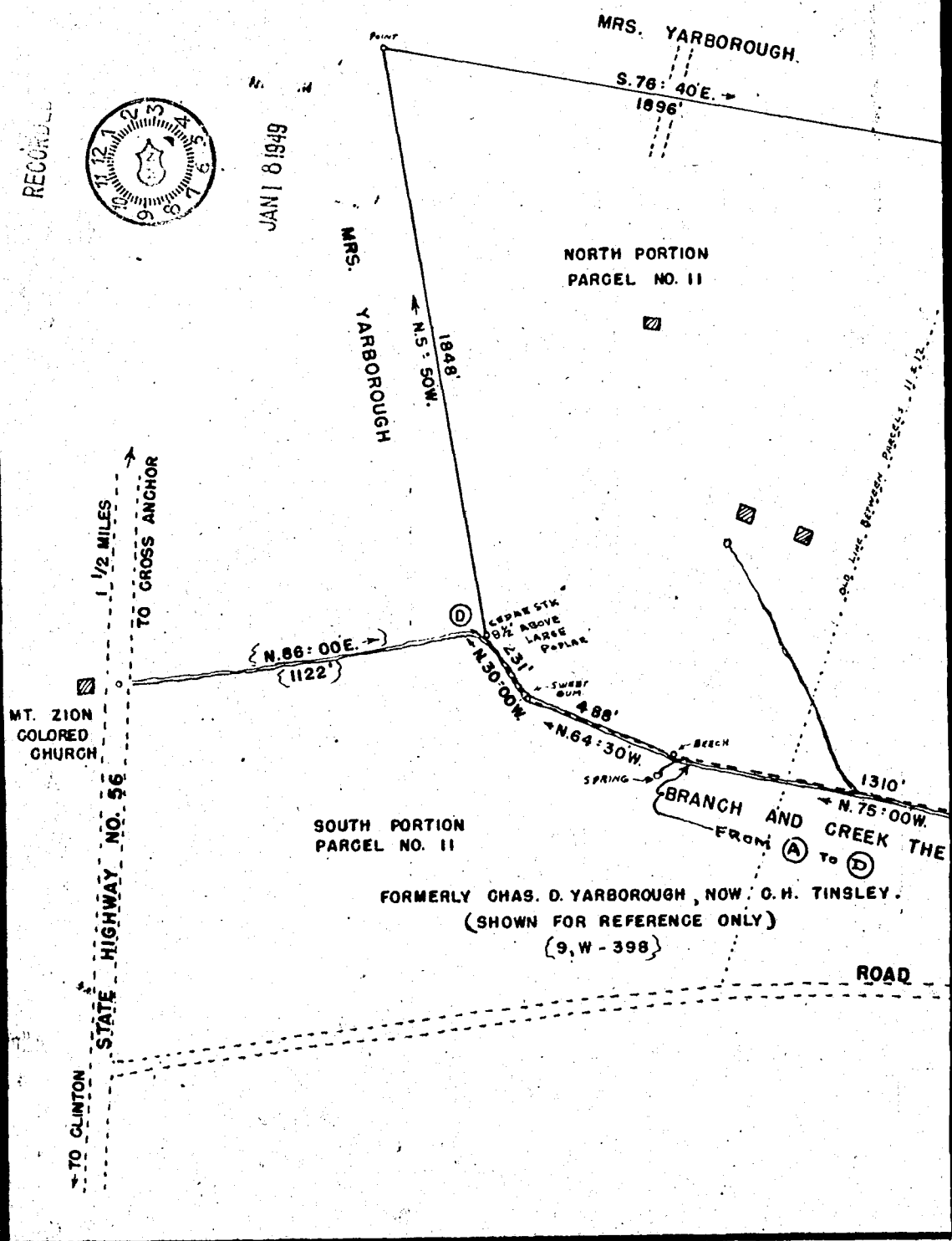


COMPILED PLAT  
 FOR  
**JAMES L. & FRANCES YARBOROUGH**  
 1 1/2 MILE SOUTH OF CROSS ANCHOR; NEAR UNION COUNTY LINE  
 SPARTANBURG COUNTY, S.C.  
 SCALE 1" = 400'                      JUNE 2, 1947

FROM SURVEY BY H. STRIBLING C.E. SEPT. 17, 1932 FOR ESTATE OF DANIEL YARBOROUGH  
 FROM SURVEY BY W.M. NASH SUR. NOV. 4, 1940 FOR CHAS. D. YARBOROUGH, ET AL

NOTE: IN DEED FROM CHAS. M. PAGE, PROBATE JUDGE, TO JAMES L. & FRANCES YARBOROUGH, RECORDED IN DEEDBOOK 10, K - PAGE 260 THE MAPPING COURSES AND DISTANCES SHOWN ALONG BRANCH LINE FROM POINT (B) TO POINT (C) WERE OMITTED THROUGH CLERICAL ERROR. THESE TWO LINES HAVE BEEN TAKEN FROM A PLAT MADE FOR CHAS. D. YARBOROUGH BY W.M. NASH NOV. 4, 1940

COMPILED BY: GOOCH & TAYLOR, SURVEYORS - {NOT SURVEYED}



This plat reduced 20%