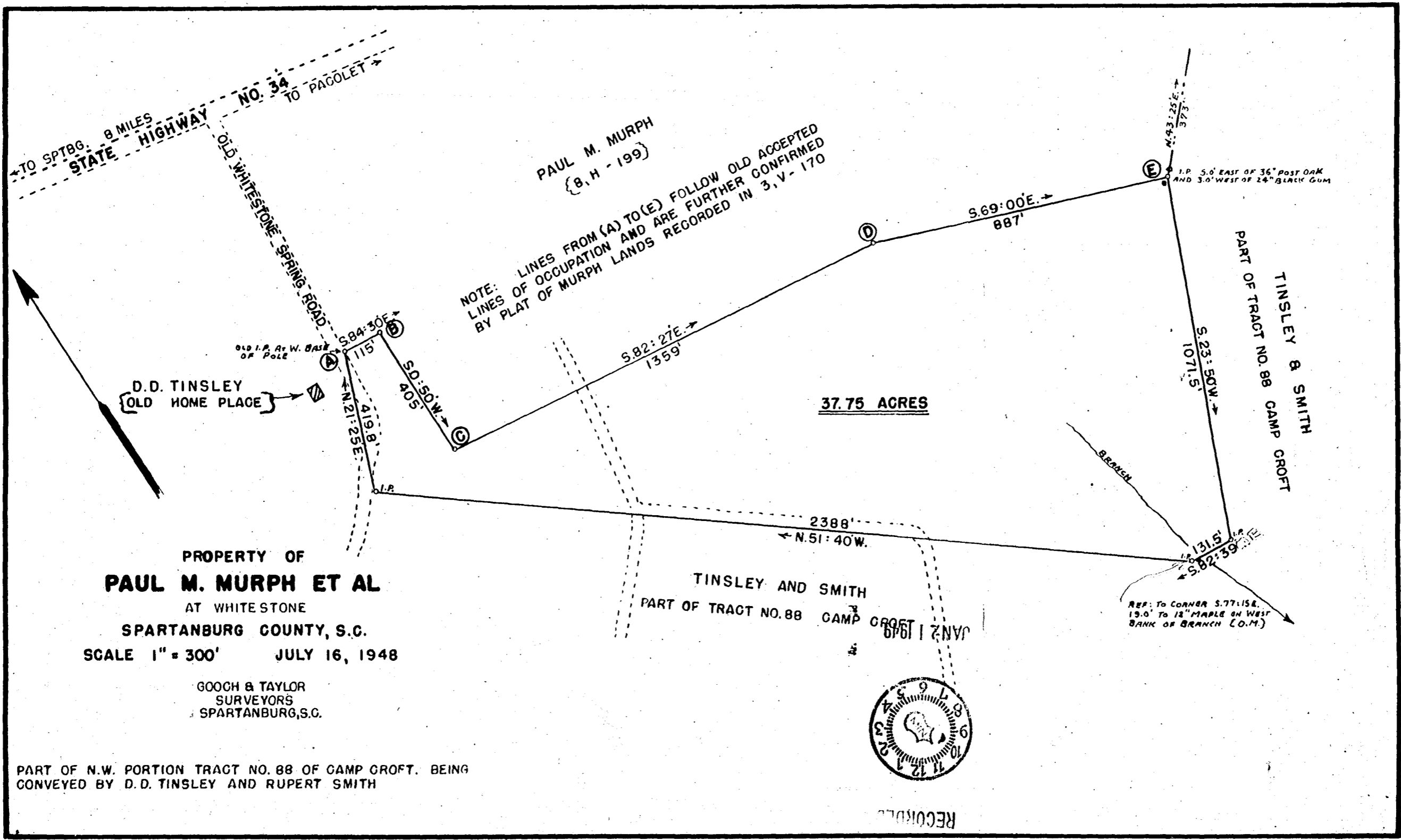


511



PROPERTY OF
PAUL M. MURPH ET AL
 AT WHITESTONE
 SPARTANBURG COUNTY, S.C.
 SCALE 1" = 300' JULY 16, 1948

GOOCH & TAYLOR
 SURVEYORS
 SPARTANBURG, S.C.

PART OF N.W. PORTION TRACT NO. 88 OF CAMP GROFT. BEING
 CONVEYED BY D.D. TINSLEY AND RUPERT SMITH

