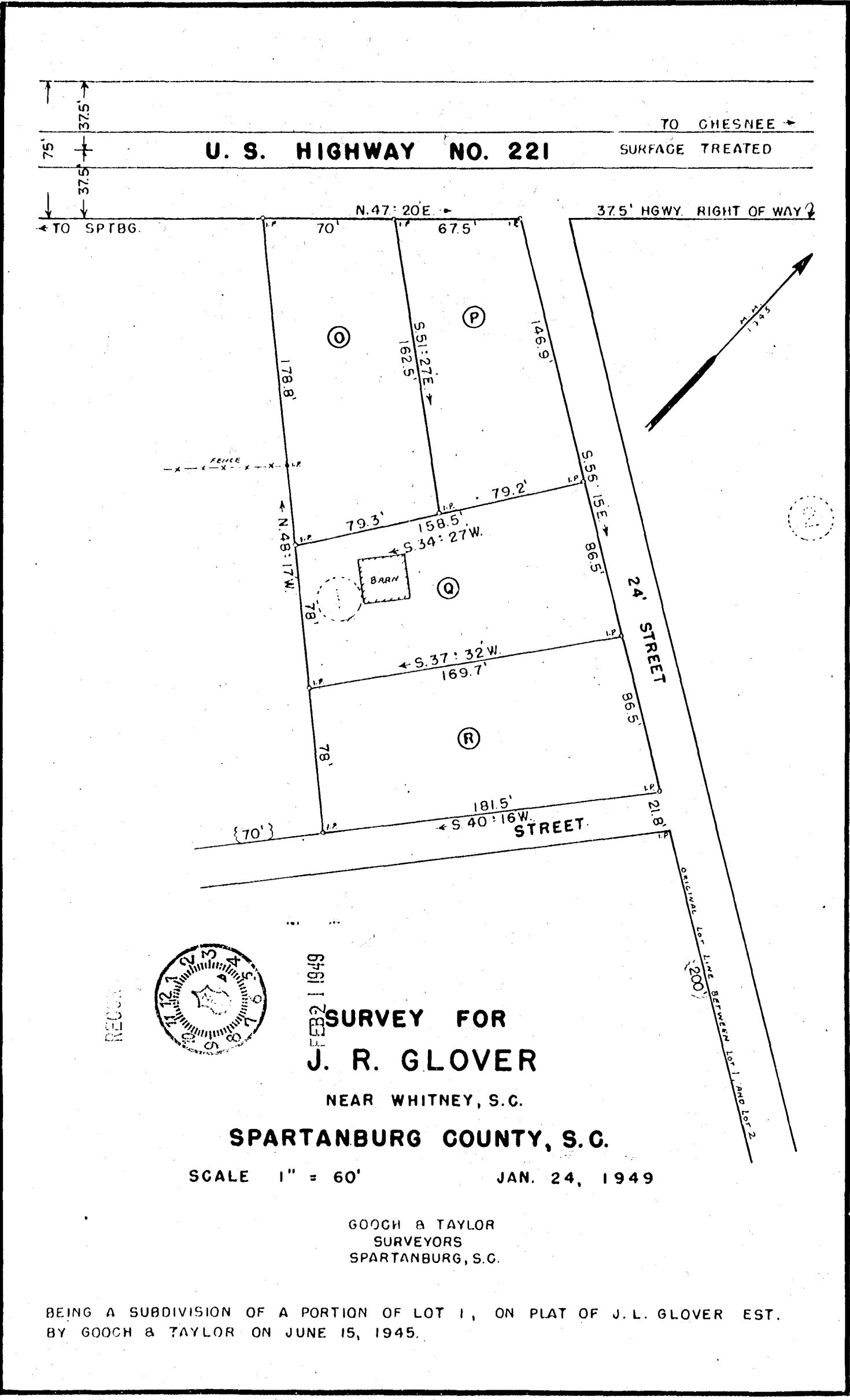


572



RECORDED
 FEB 21 1949

**SURVEY FOR
 J. R. GLOVER**

NEAR WHITNEY, S.C.

SPARTANBURG COUNTY, S.C.

SCALE 1" = 60'

JAN. 24, 1949

GOOCH & TAYLOR
 SURVEYORS
 SPARTANBURG, S.C.

BEING A SUBDIVISION OF A PORTION OF LOT 1, ON PLAT OF J. L. GLOVER EST.
 BY GOOCH & TAYLOR ON JUNE 15, 1945.

{ R-132 } { R-170 } { R-175 }

R - 193