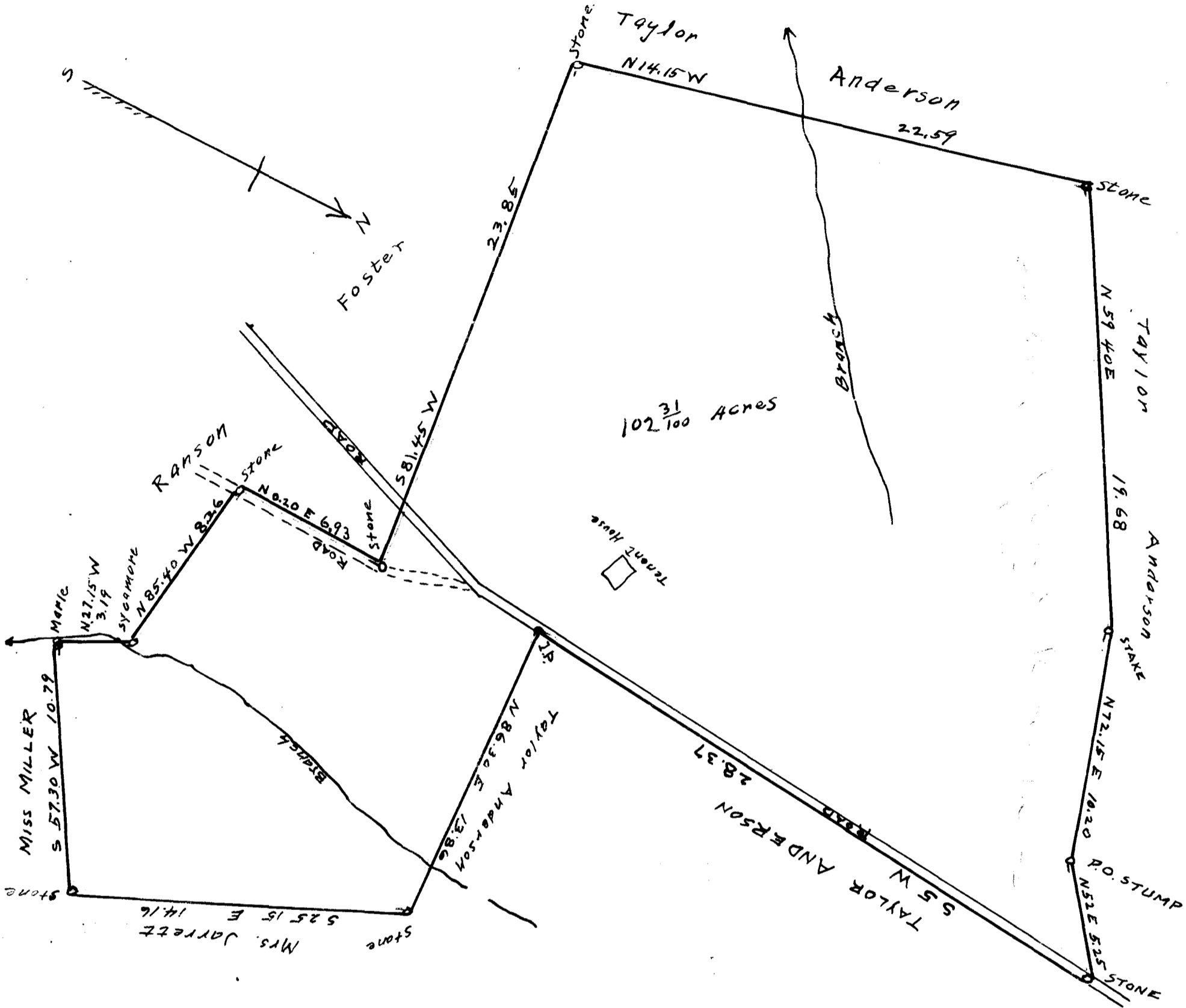


EX PARTE
SYLVESTER SMITH



State of South Carolina }
Spartanburg County }

I hereby certify that the above plat represents 102 ³¹/₁₀₀ acres
of land. Being part of C. O. Lanfords Estate.

Surveyed Sept. 29th 1919

Scale 5 chs. to 1 inch.

Ladshaw Bros.
Engineers.

Registered, Certified & Examined April 5, 1919.