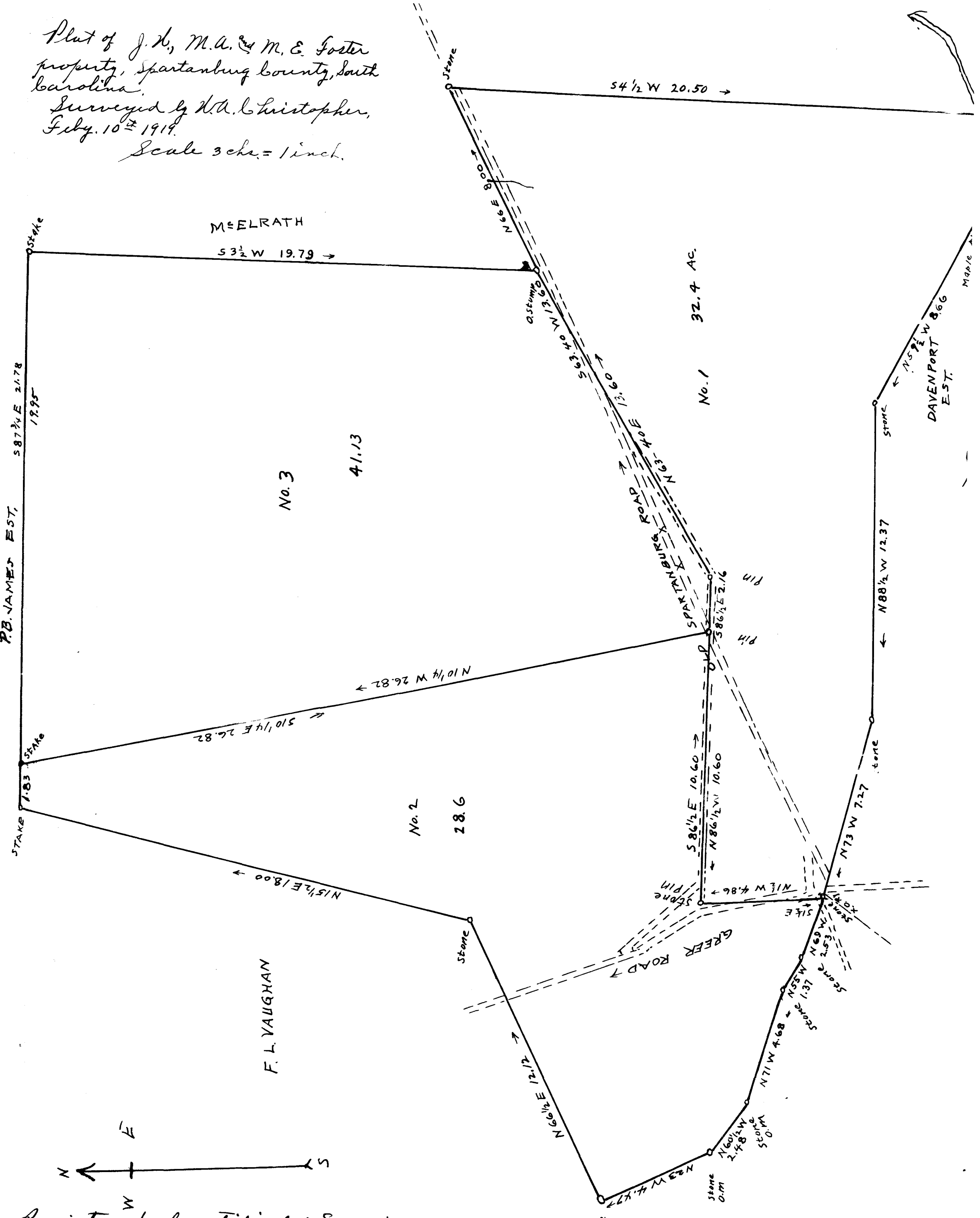


200

EX PARTE
J.W.; M.A. & M.E. FOSTER

Plat of J.W., M.A. & M.E. Foster
property, Spartanburg County, South
Carolina.
Surveyed by W.A. Christopher,
Feb. 10th 1919.
Scale 3 ch. = 1 inch.



Registered, Certified & Examined March 24, 1919