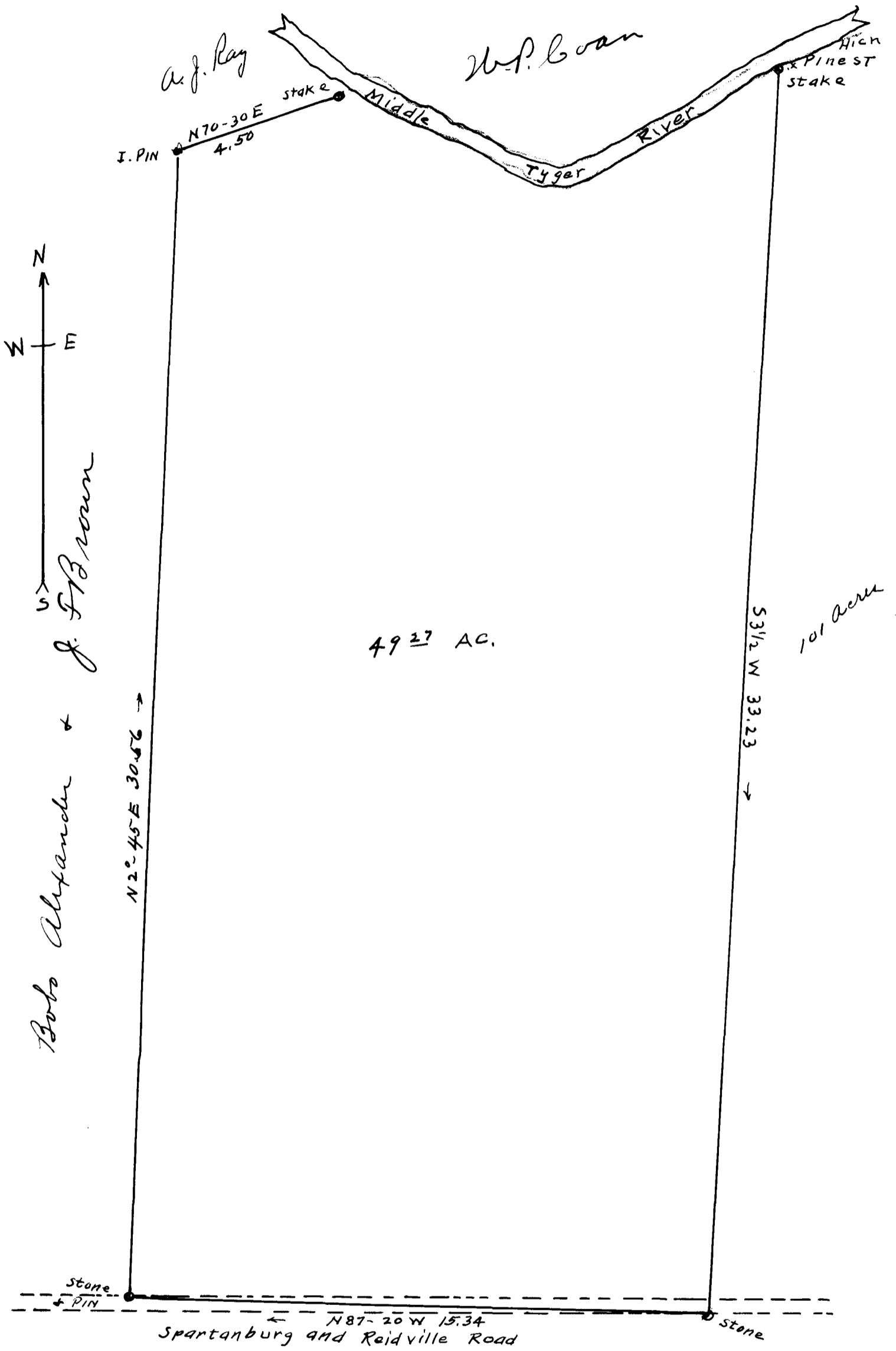


183

EX PARTE  
G. C. MILLER & W. W. CRIM



Mrs. Harry E. Lanford +  
Bob Alexander

PROPERTY  
OF  
G. C. MILLER & W. W. CRIM  
Spartanburg County Reidville Tp. S.C.  
Surveyed by W.A. Christopher Jan. 15<sup>th</sup> 1919  
scale 1 in = 3 chs.

Registered, Certified & Examined January 18, 1919