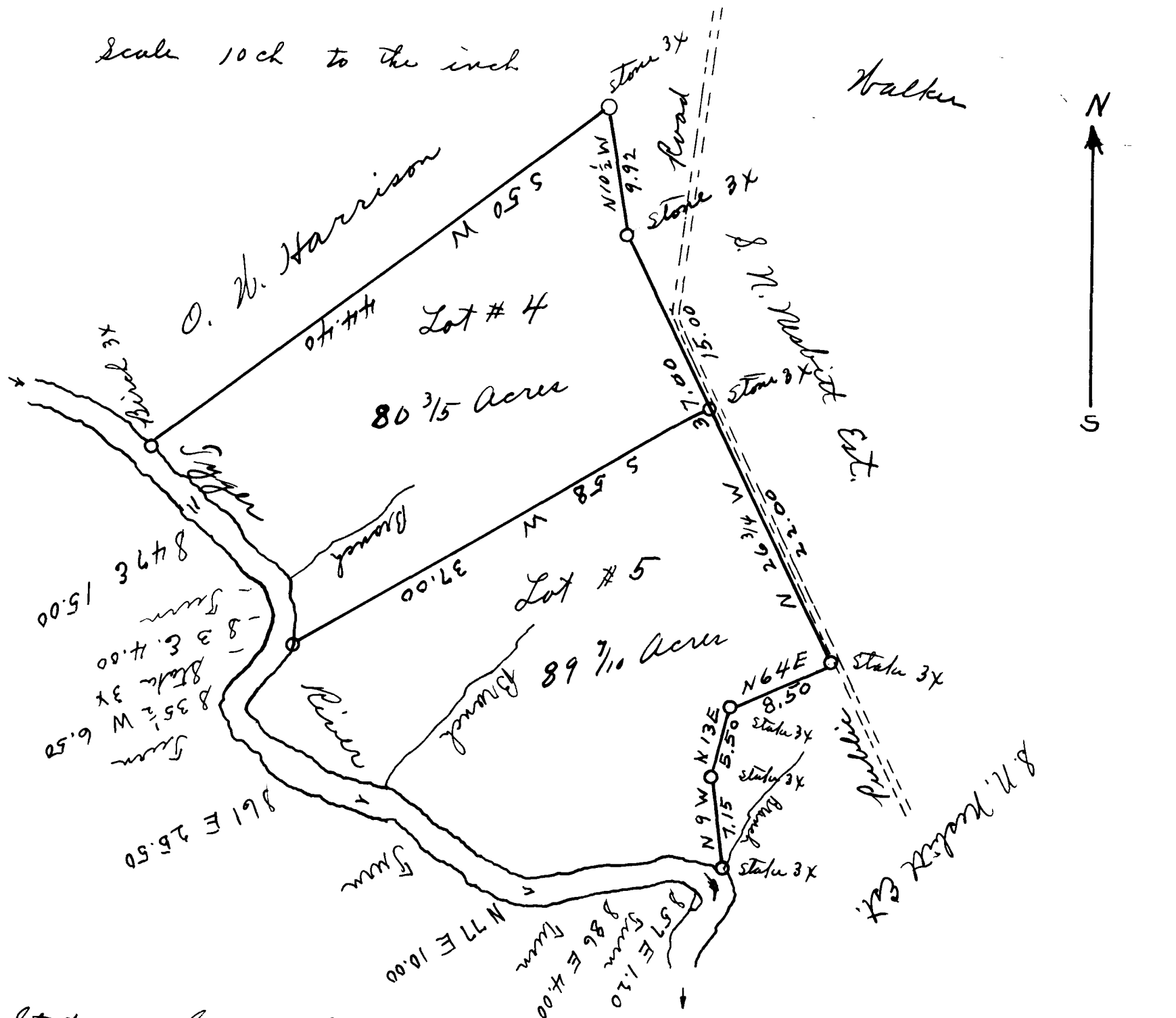


177

EX PARTE  
ELIPHUS THOMAS EST.



State of South Carolina  
County of Spartanburg

Scale 10 ch. per inch

The above Plat represents Lots # 4 + # 5  
of Eliphus Thomas Est. Calculations include  
to the center of the River. Surveyed Aug 7, 1913  
S. G. + Paul H. Anderson, Surveyors

Registered, Certified + Examined Dec. 30, 1918