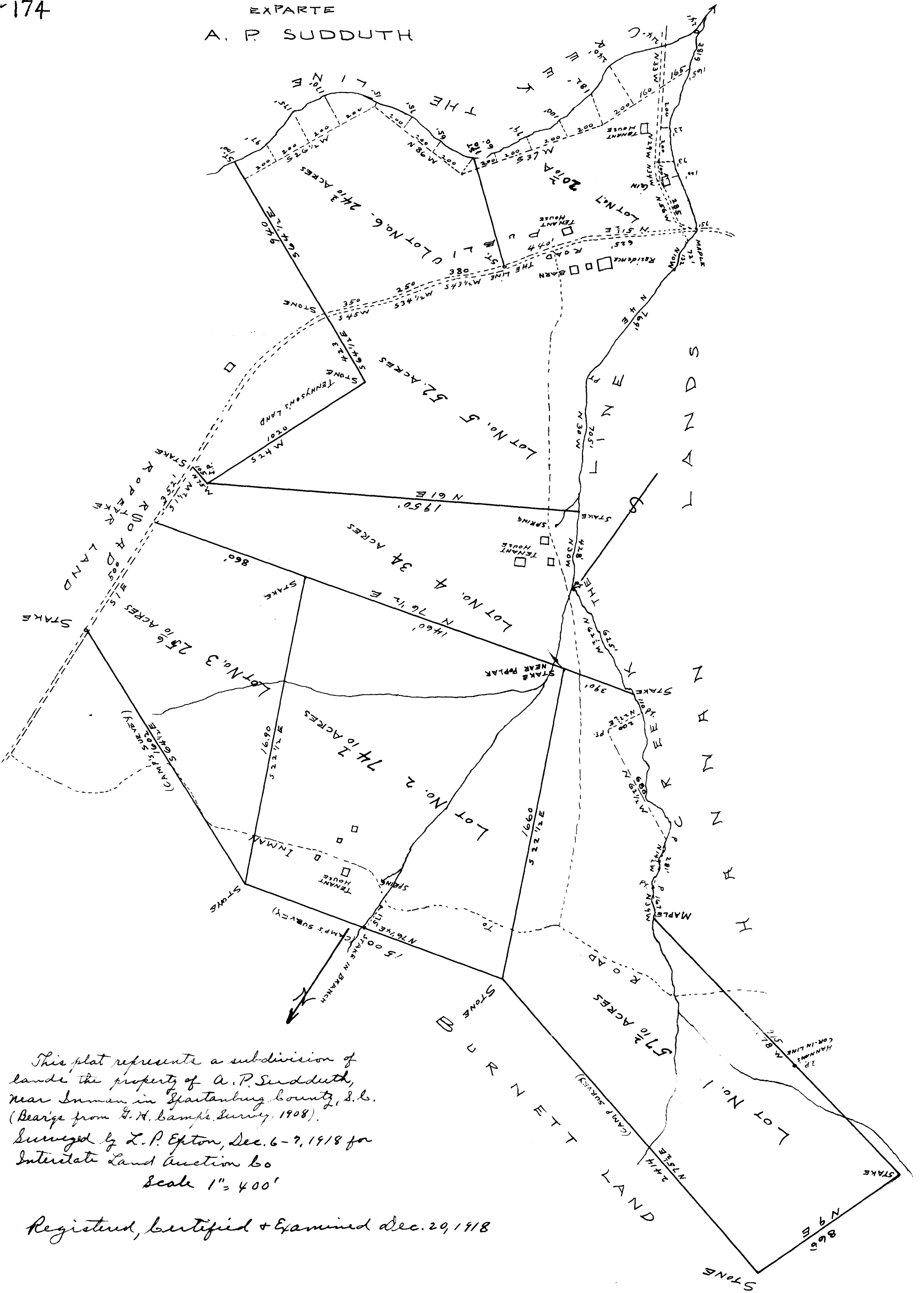


174

EX PARTE  
A. P. SUDDUTH



This plat represents a subdivision of  
 lands the property of A. P. Sudduth,  
 near Inman in Spartanburg County, S. C.  
 (Bearings from G. H. Camp's Survey, 1908).

Surveyed by L. P. Epton, Dec. 6-7, 1918 for  
 Interstate Land Auction Co  
 Scale 1" = 400'

Registered, certified & Examined Dec. 29, 1918