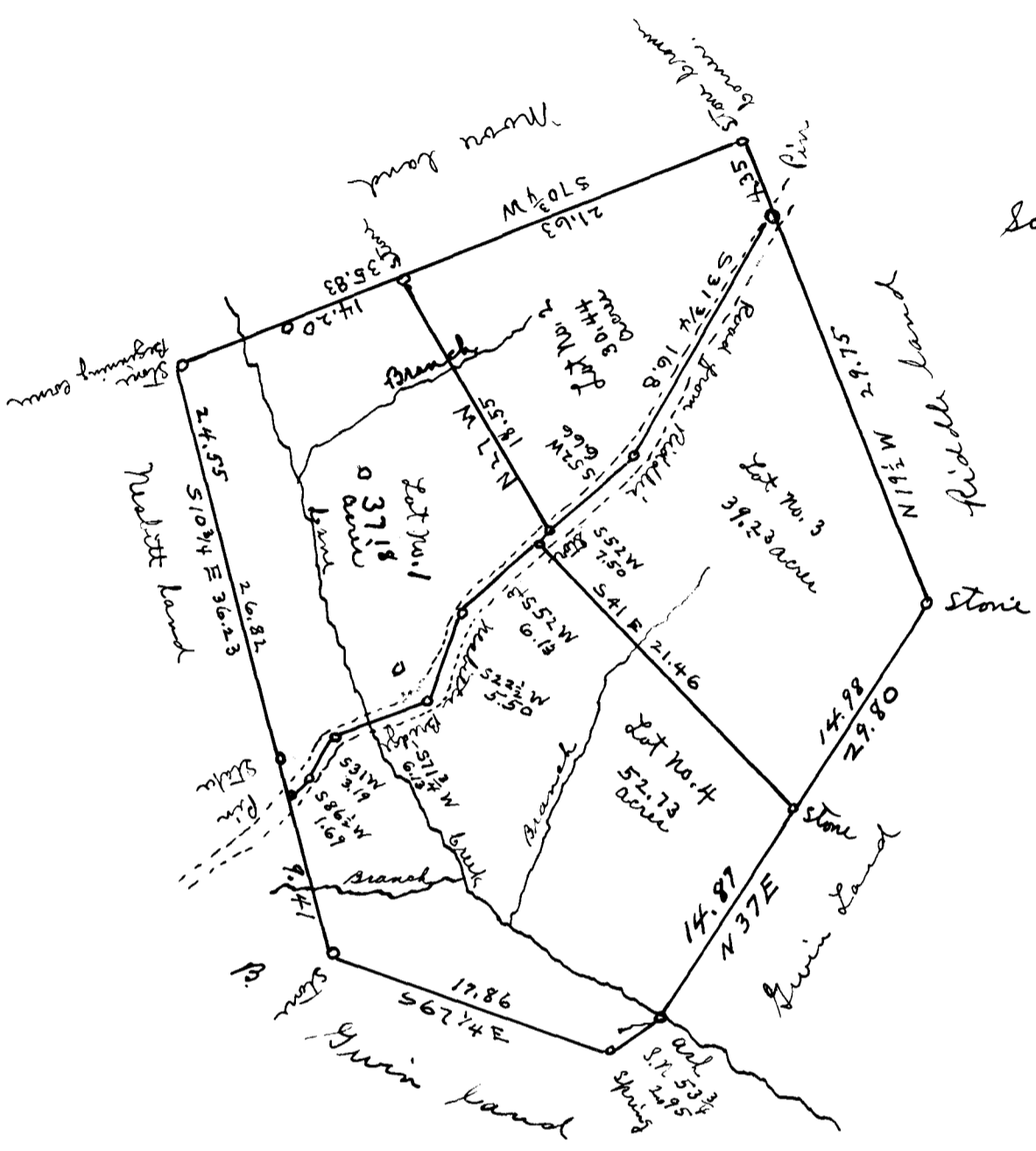


EX PARTE
ENOCH AND EMMA C. OSHIELDS

The red dotted lines
represents a tract of
land sold to L. Moore
off of the above plat
L. Moore sold same
to Enoch Oshields



Scale 10 ch. per inch



South Carolina
Spartanburg Co.

The above plat shows the meets and bounds of a tract of land
containing one hundred fifty nine and fifty eight one hundredths
(159.58) acres, more or less. Subdivided into four tracts. Tract No. 1
containing 37.18 acres, more or less. Lot No. 2 containing 30.44
acres, more or less. Lot No. 3 containing 39.23 acres more or less.
Lot No. 4 containing 52.73 acres, more or less. Surveyed by me
November 14-16, 1918

J. R. McArthur
Surveyor

Registered, Located & Examined Dec. 7, 1918