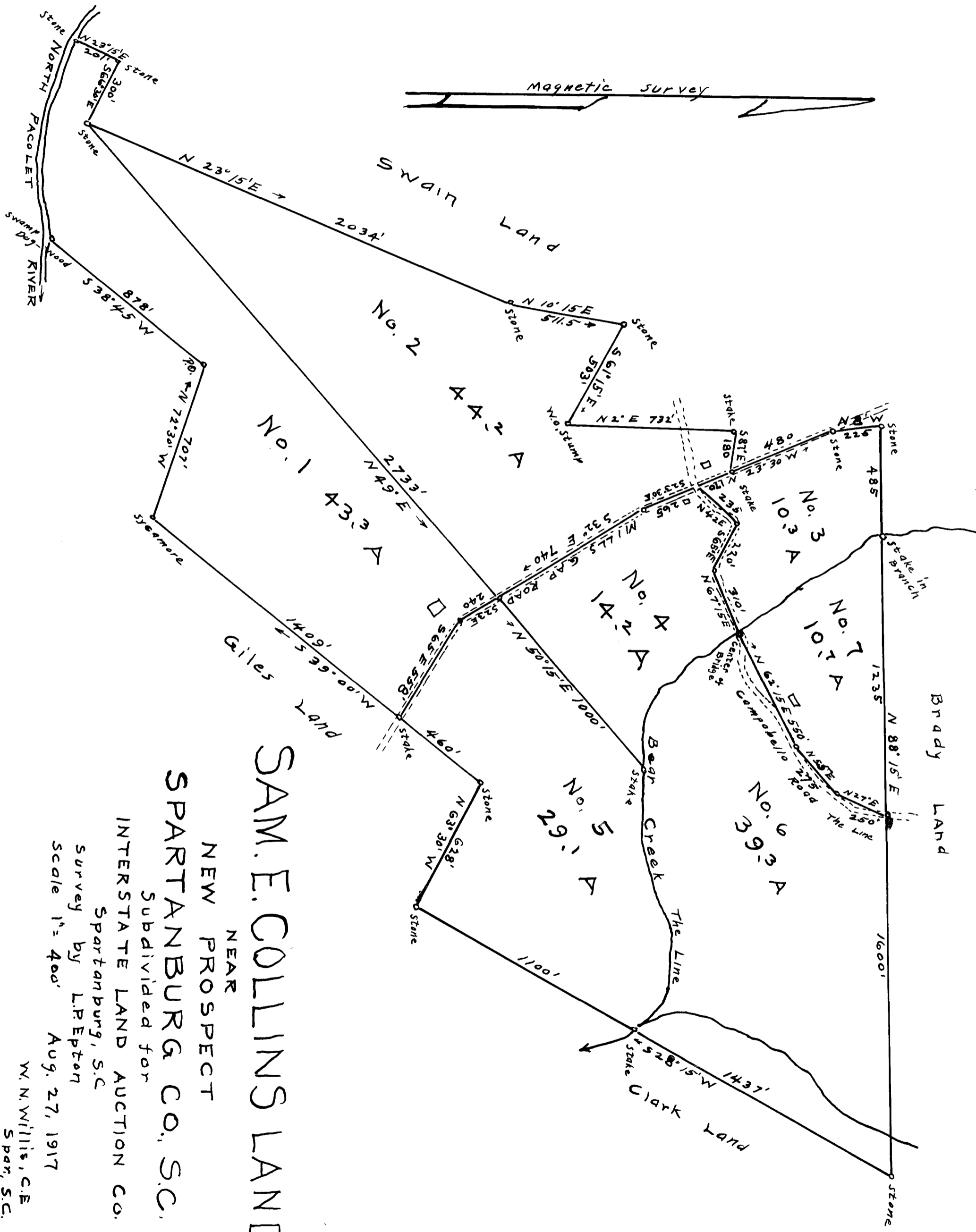


167

EX PARTE
S. F. COLLINS



SAM. E. COLLINS LAND
 NEAR
 NEW PROSPECT
 SPARTANBURG, S.C.
 Subdivided for
 INTERSTATE LAND AUCTION CO.
 Spartanburg, S.C.
 Survey by L. REPTON
 Scale 1" = 400' Aug. 27, 1917
 W. N. WILLIS, C.E.
 SPAN, S.C.

Registered, Certified & Examined December 5, 1918