

159

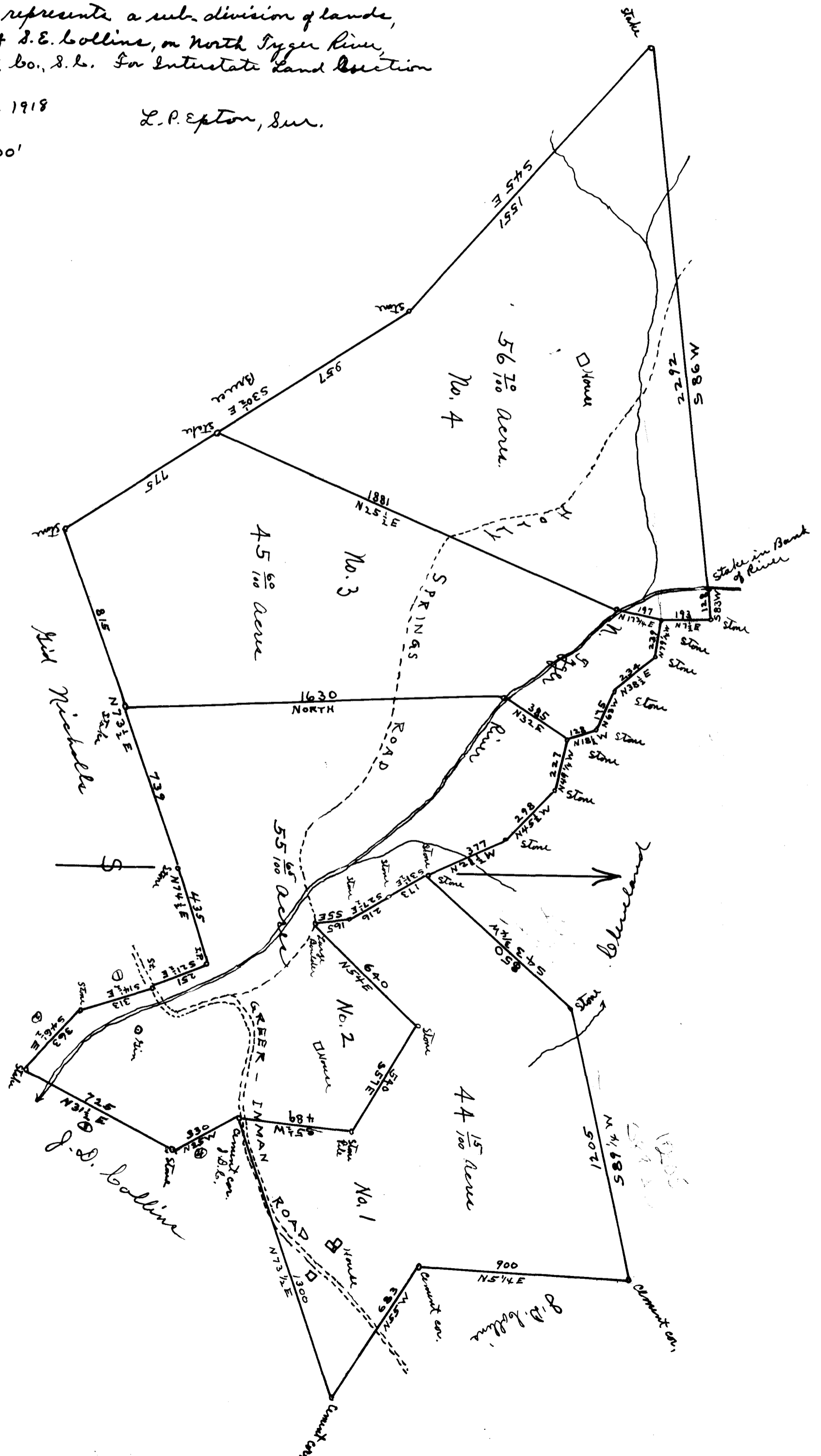
EX PARTE  
S. E. COLLINS

The above plat represents a sub-division of lands,  
the property of S. E. Collins, on North Tigger River,  
Spartanburg Co., S. C. For Interstate Land Section  
Co.,

Sept. 27-28, 1918

L. P. Epton, Sur.

Scale 1" = 400'



Registered, Certified & Examined Memorandum 11<sup>th</sup> 1918

Note:  
Bearings & distances ①, ②, ③, ④  
Taken from deed to S. E. Collins  
from Cleveland & Board