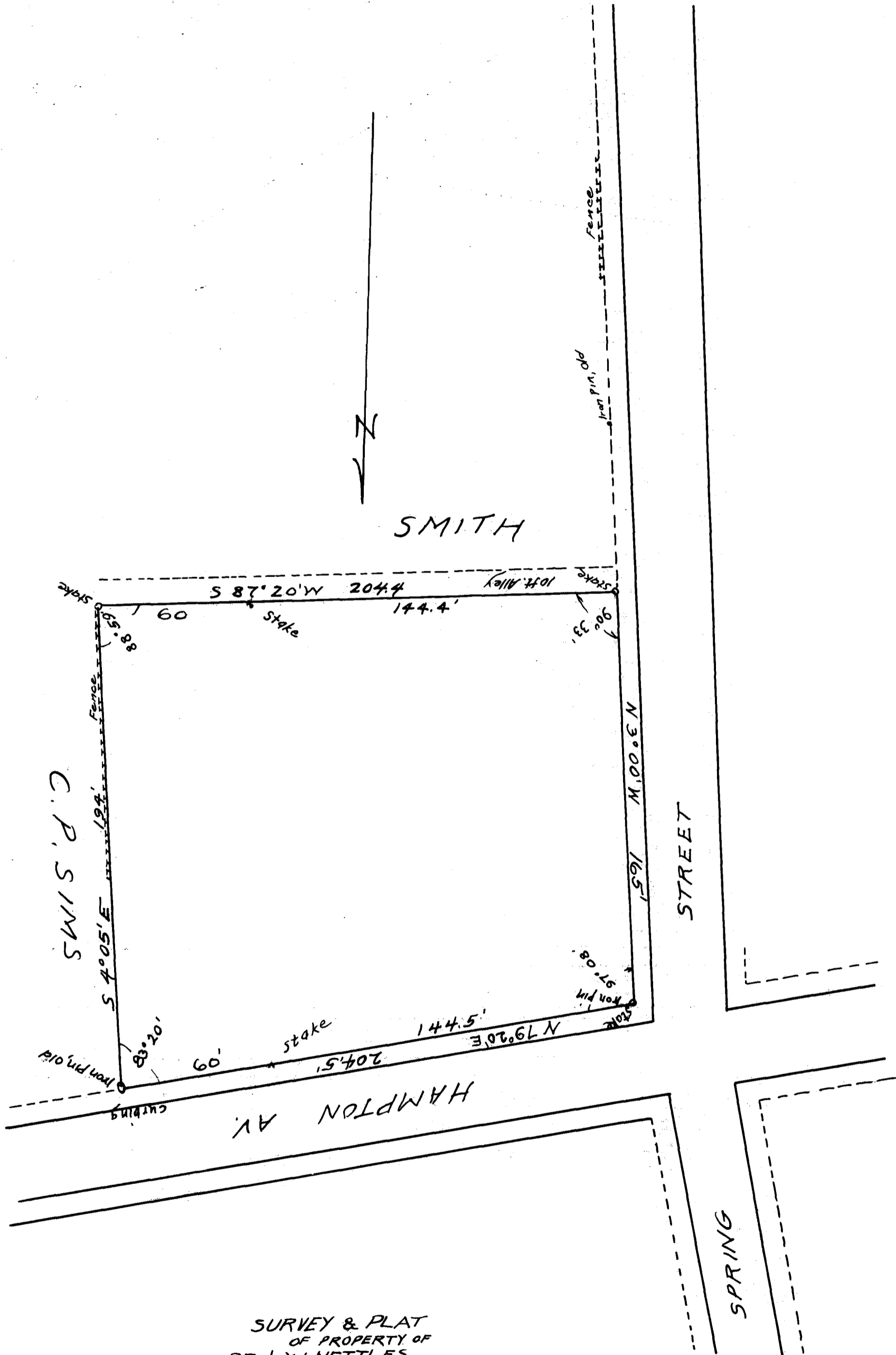


154

EX PARTE
G. W. FINCH



SURVEY & PLAT
OF PROPERTY OF
DR. L. W. NETTLES
SPRING ST. & HAMPTON AV.,
SPARTANBURG S. C.
Surveyed Dec. 1909
H. STRIBLING SUR.
SCALE 1 IN = 40 FT.

Registered, Certified & Examined Sep. 13, 1918