

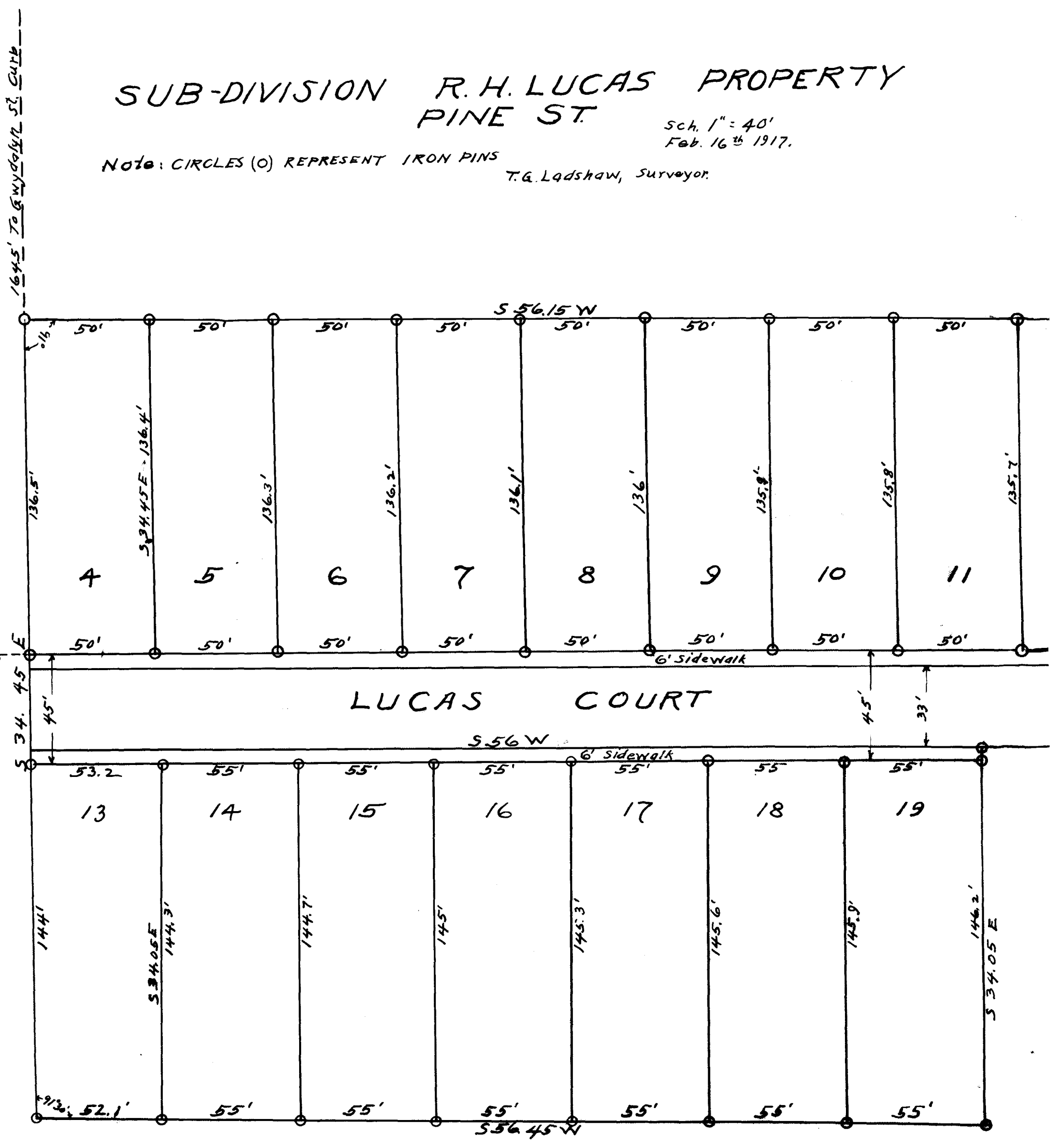
151

EX PARTE
E. JULIA SELDEN

SUB-DIVISION R. H. LUCAS PROPERTY PINE ST.

Sch. 1" = 40'
Feb. 16th 1917.

Note: CIRCLES (O) REPRESENT IRON PINS
T. G. Ladshaw, Surveyor.



Registered, certified + examined August 8, 1918