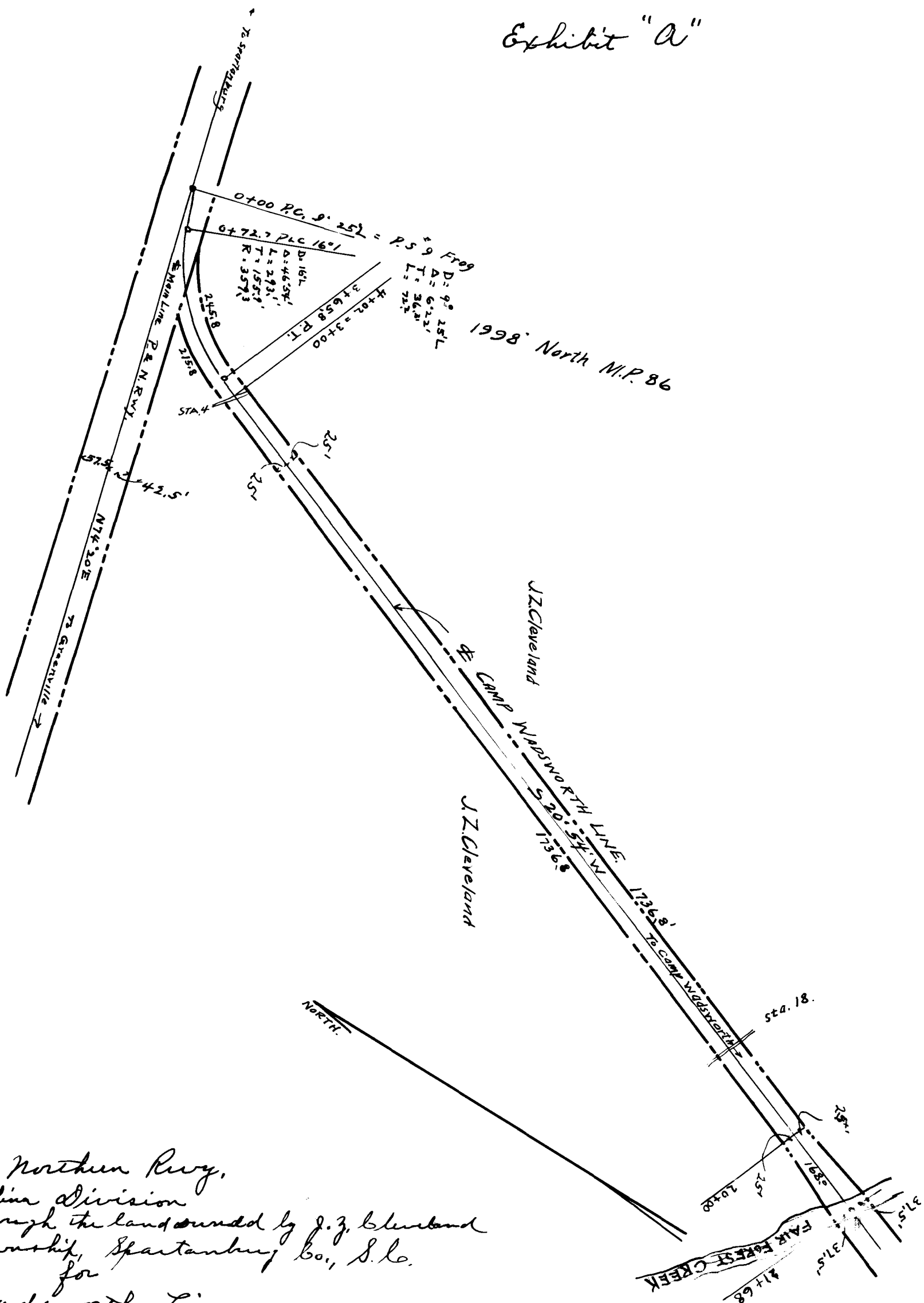


150

EX PARTE
PIEDMONT & NORTHERN R.W.Y.

Note: See Dred Book 5-T page 533.

Exhibit "A"



Piedmont and Northern Rwy,
 South Carolina Division
 Right of Way through the land owned by J. Z. Cleveland
 Spartanburg Township, Spartanburg Co., S.C.
 for
 Camp Wadsworth Line
 Office of Chief Engineer Charlotte, N.C.
 Scale 1" = 200'
 December 1917
 2.42 Acres

Registered, Certified & Examined July 25, 1918