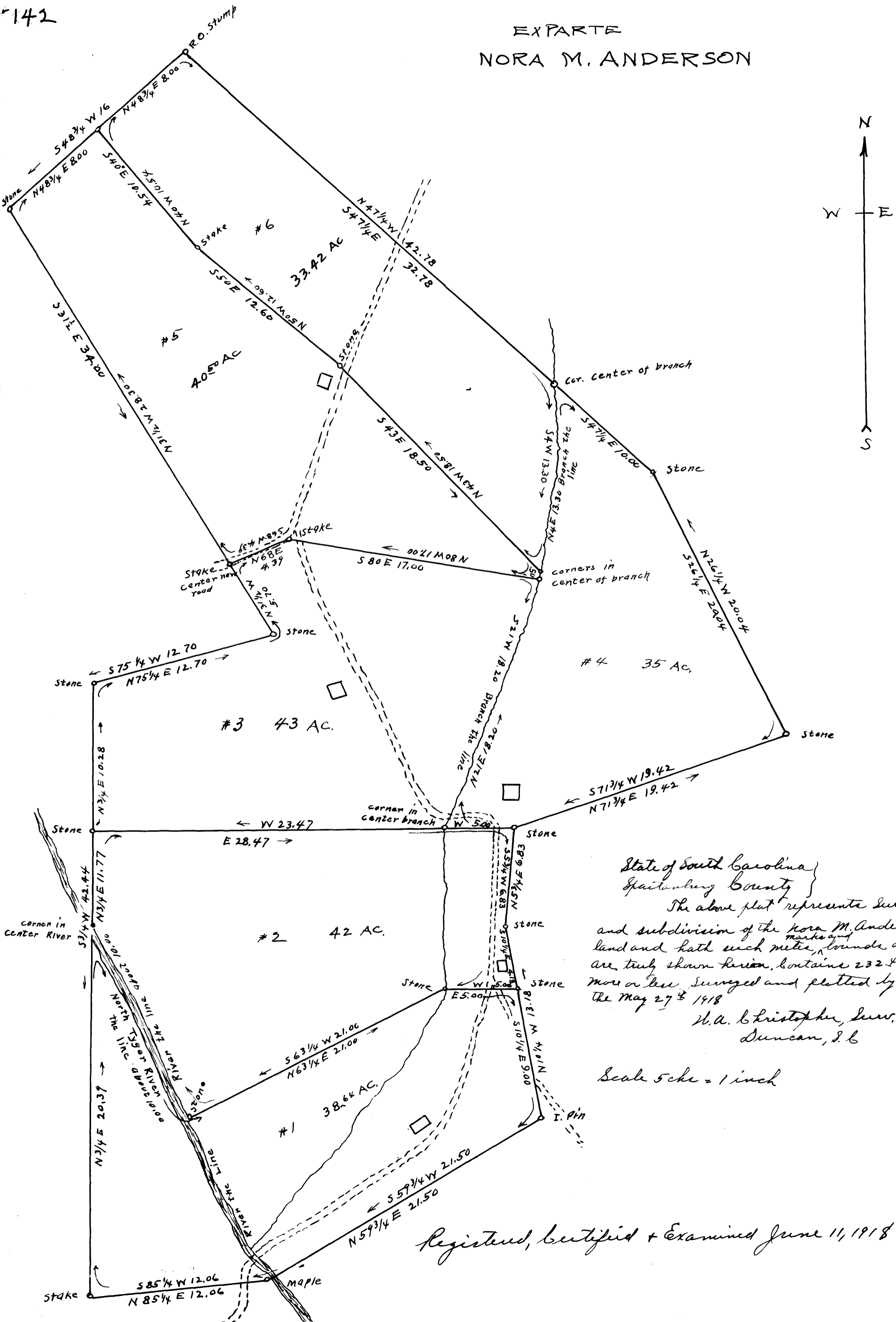


142

EX PARTE
NORA M. ANDERSON



State of South Carolina
 Spartanburg County
 The above plat represents survey
 and subdivision of the Nora M. Anderson
 land and hath such metes, ^{marks and} bounds as
 are truly shown herein, contains 232 1/2 acres
 more or less, surveyed and plotted by me
 the May 27th 1918
 W. A. Christopher, Surveyor,
 Duncan, S. C.

Scale 5 chs = 1 inch

Registered, certified + Examined June 11, 1918