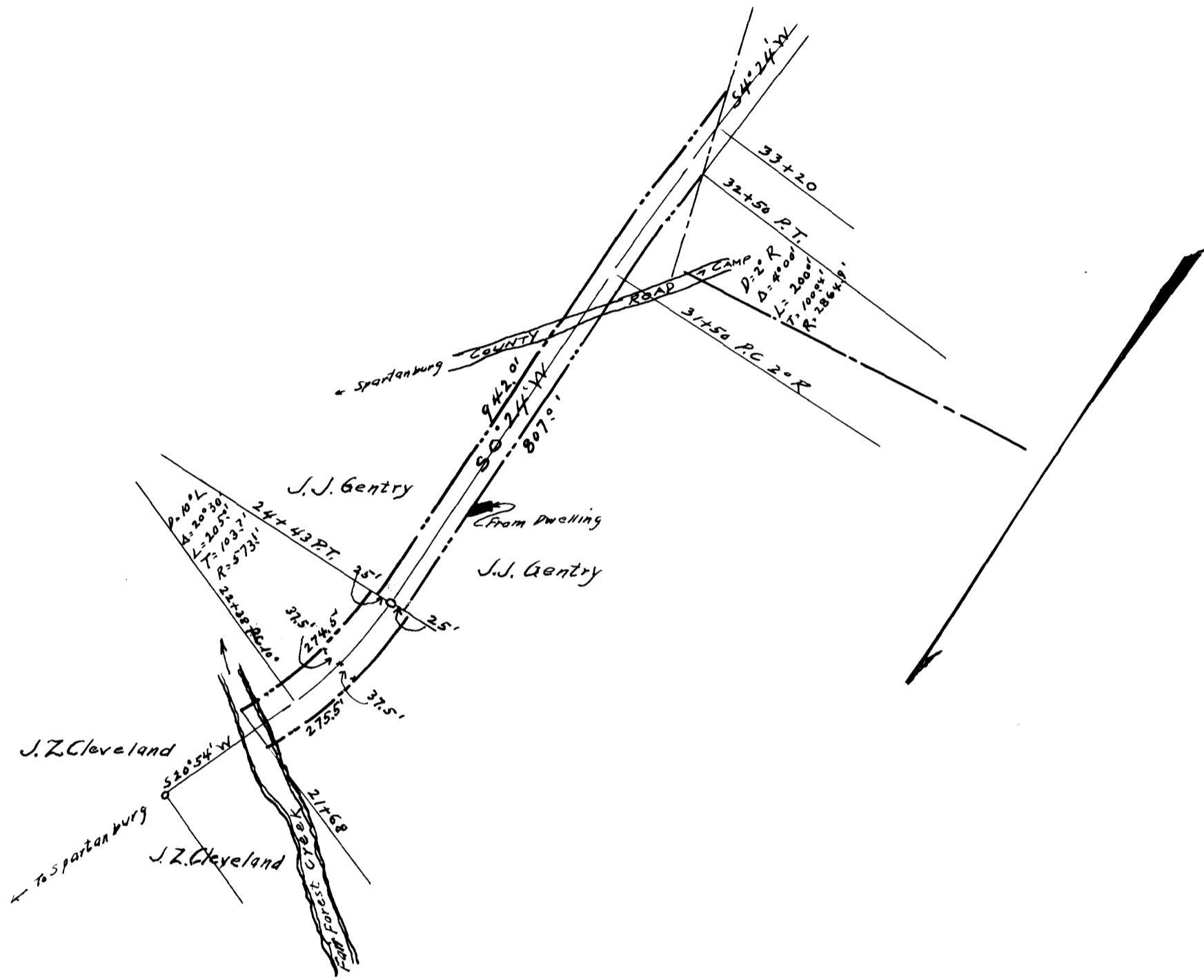


137

EX PARTE
PIEDMONT & NORTHERN RY. CO.



PIEDMONT AND NORTHERN R.WY.
 SOUTH CAROLINA DIVISION
 RIGHT OF WAY THROUGH THE LAND OWNED BY J. J. GENTRY
 SPARTANBURG TOWNSHIP, SPARTANBURG Co., S.C.
 FOR
 CAMP WADSWORTH LINE
 OFFICE OF CHIEF ENGINEER CHARLOTTE, N.C.
 SCALE: 1" = 200' DECEMBER 1917
 150 ACRES.

NOTE:
 SEE DEED BOOK 6-T PAGE 473

Registered, Certified & Examined June 5, 1918