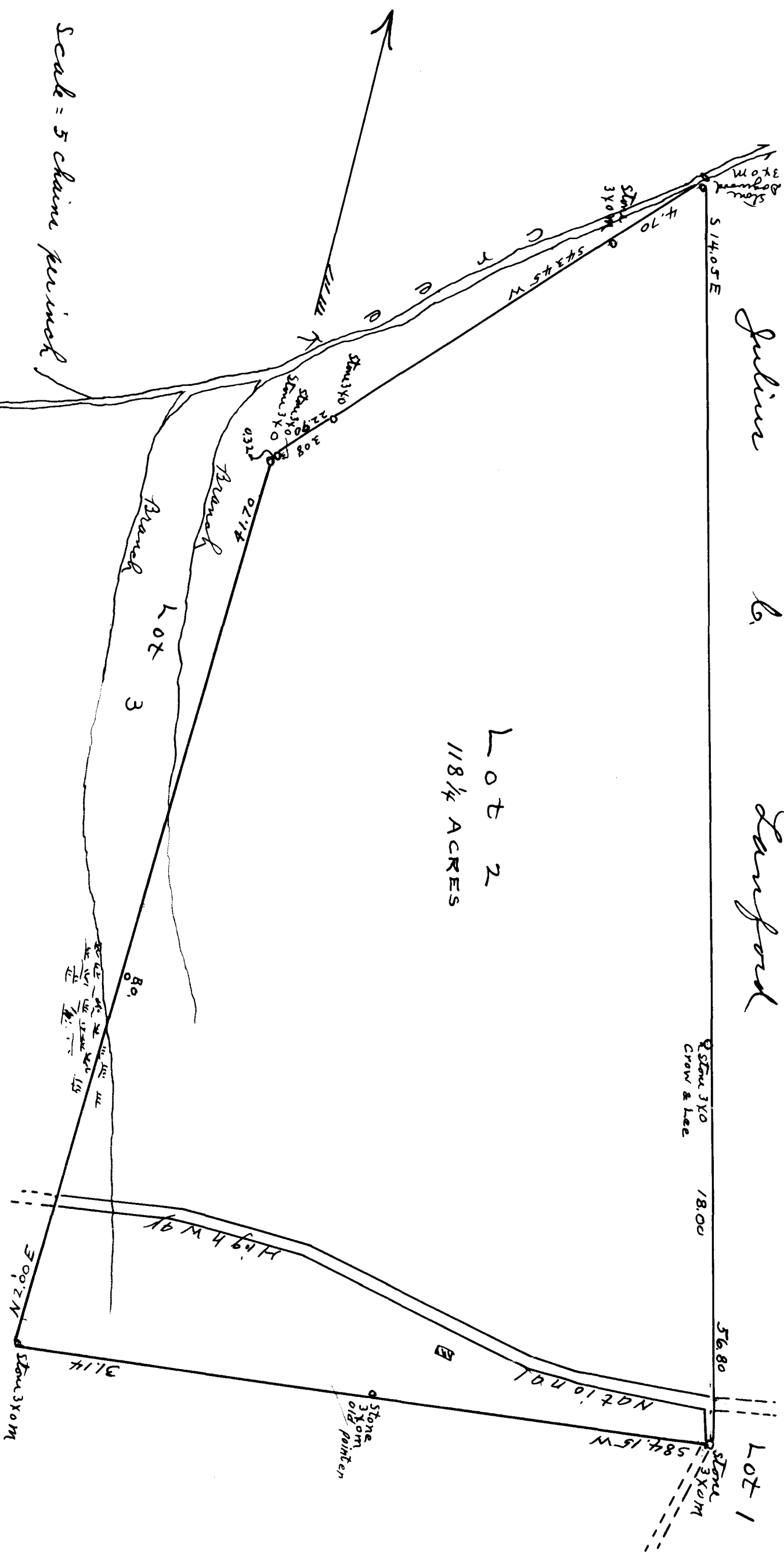


EX PARTE
GEO. B. DEAN ESTATE



Scale = 5 chains per inch

Lot 2
118 1/4 ACRES

State of South Carolina
 County of Spartanburg
 I certify that the above plat represents the correct magnetic directions,
 meter and bounds of lot 2 in the division of the estate of Geo. B. Dean,
 situated on the Spartanburg and Greenville Road (National Highway)
 about 3 miles from the City of Spartanburg,
 surveyed and plotted by me on date 22-27 Nov. 1909
 Geo. D. Radabaugh
 Surveyor.

Registered, Certified & Examined January 28, 1918