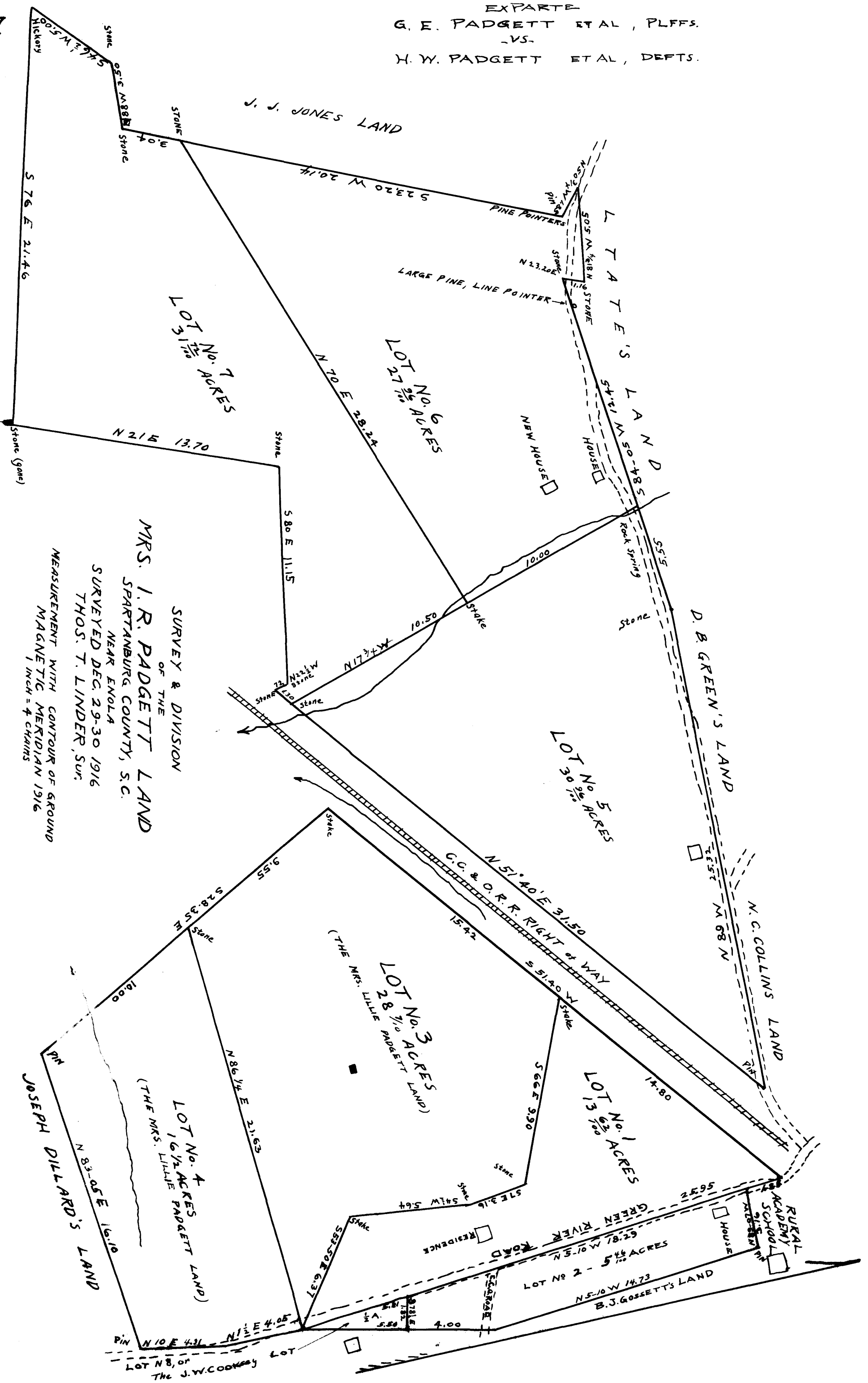


EX PARTE
G. E. PADGETT ET AL, PLFFS.
-VS-
H. W. PADGETT ET AL, DEFTS.

127

DR. J. A. MARTIN'S LAND

Registered, Certified & Examined January 29, 1918



SURVEY & DIVISION
OF THE
MRS. I. R. PADGETT LAND
SPARTANBURG COUNTY, S.C.
NEAR ENOLA
SURVEYED DEC. 29-30 1916
THOS. T. LINDER, SUR.

MEASUREMENT WITH CONTOUR OF GROUND
MAGNETIC MERIDIAN 1916
1 INCH = 4 CHAINS

LOT No. 8, or
The J.W. COOK'S