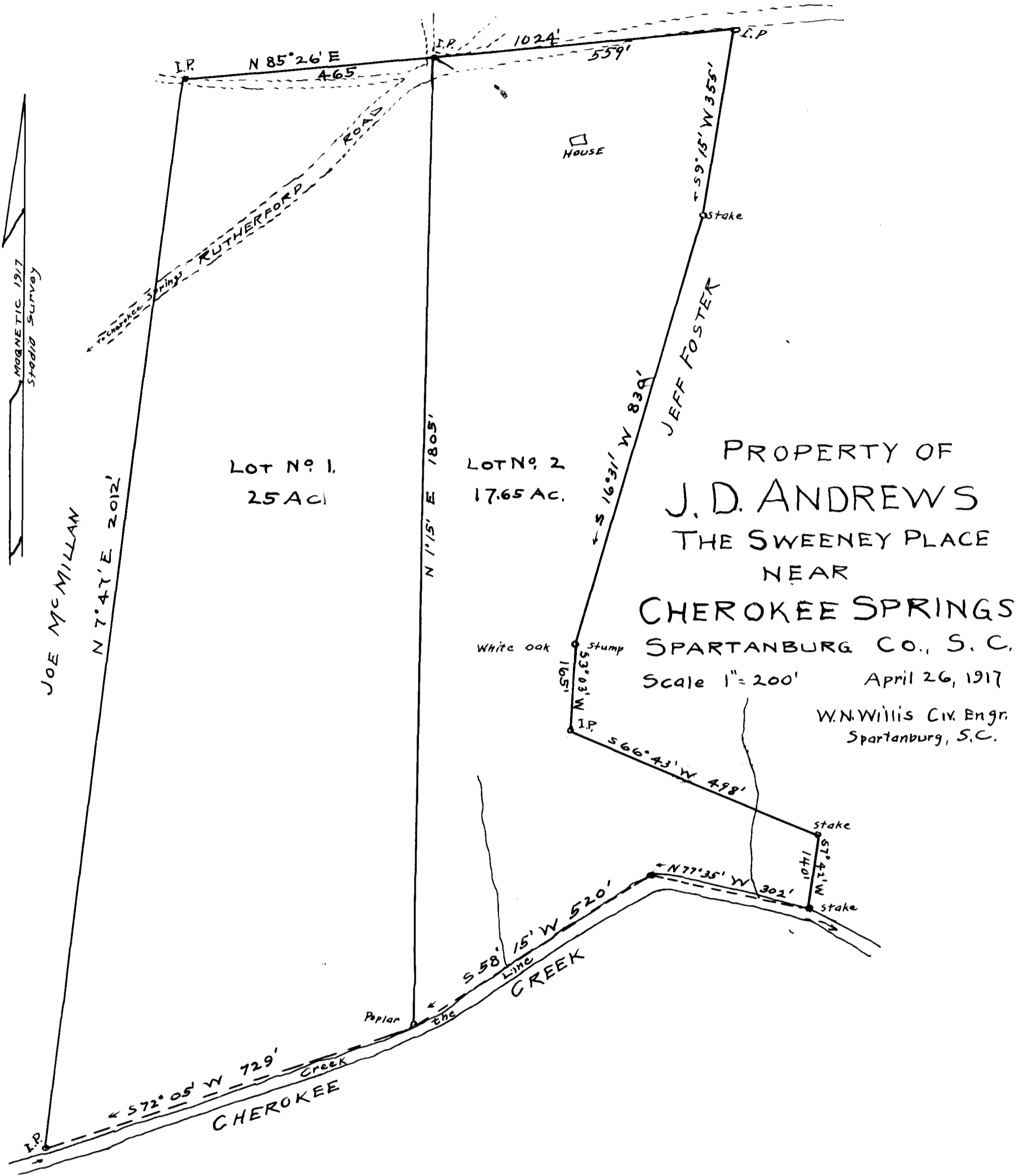


✓107

EX PARTE  
J. D. ANDREWS



PROPERTY OF  
**J. D. ANDREWS**  
 THE SWEENEY PLACE  
 NEAR  
**CHEROKEE SPRINGS**  
 SPARTANBURG CO., S. C.  
 Scale 1" = 200' April 26, 1917  
 W.N. Willis Civ. Engr.  
 Spartanburg, S.C.

*Registered, certified + Examined Nov. 28, 1917*