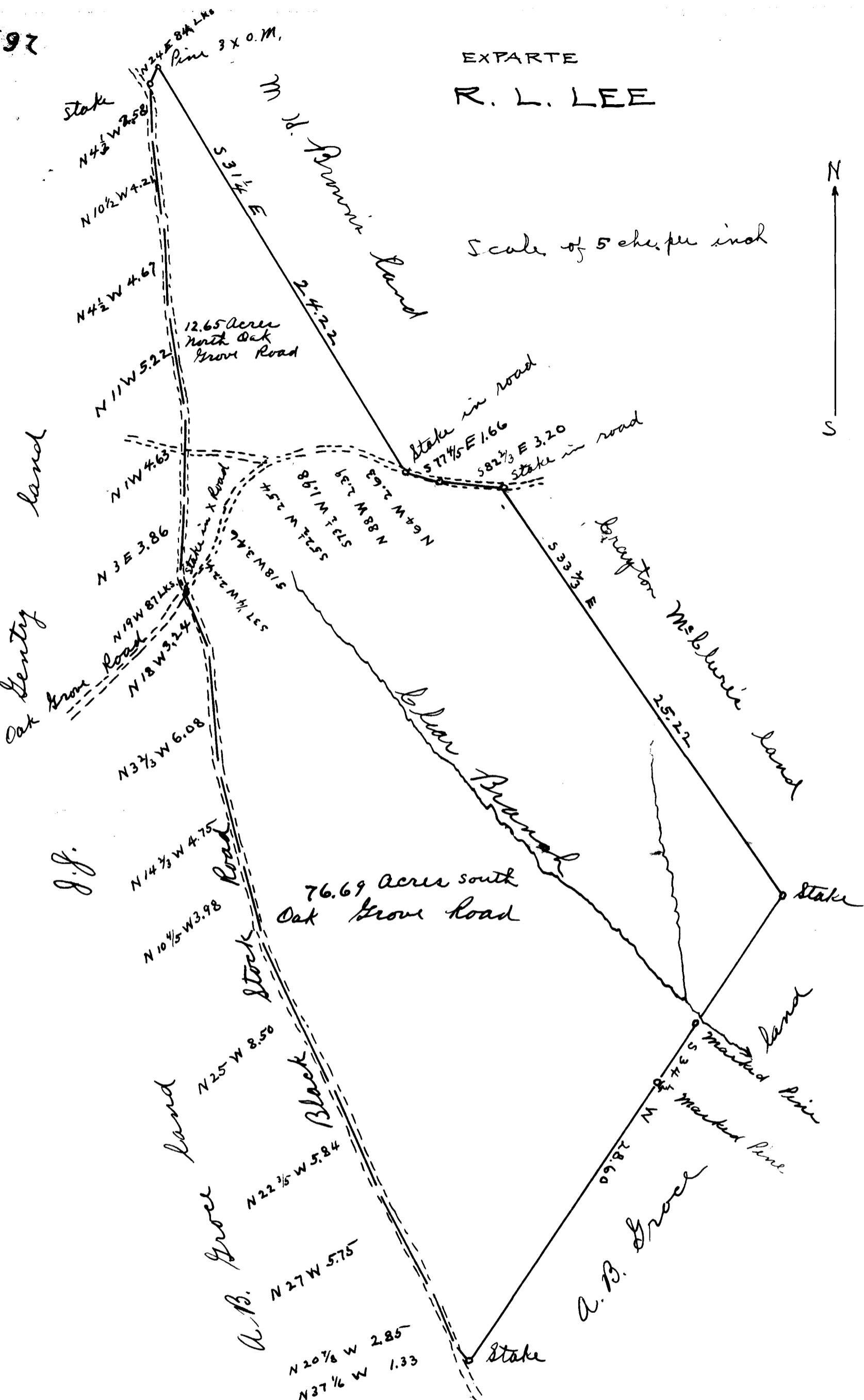


97

EX PARTE  
R. L. LEE

Scale of 5 chains per inch



State of South Carolina } The above plat correctly represents a tract  
 Spartanburg County } of land belonging to R. L. Lee. It is situated in Spartanburg County  
 State of South Carolina and lies on the east side of Black Stock Road  
 and on both sides of Bear Branch and about one and a half  
 miles west of Landrum. The part north of Oak Grove road  
 contains twelve and 65/100 acres and was surveyed by me Sept. 1907  
 the part south of Oak Grove Road contains seventy six and 69/100 acres  
 and was surveyed by me July 25<sup>th</sup> 1917  
 This land is covered by two deeds: One from N. F. and Jacob Carpenter  
 to R. L. Lee dated July 13<sup>th</sup> 1905 and recorded at Spartanburg, S. C. in office of  
 Reg. Mesne Conveyance in Vol. 4-F page 200, the other from M. H. Brown  
 dated Nov. 1908 and recorded at same office in Book "4-1" page 228  
 M. E. Johnson  
 Surveyor

Registered, Certified & Examined Aug. 15<sup>th</sup> - 1917