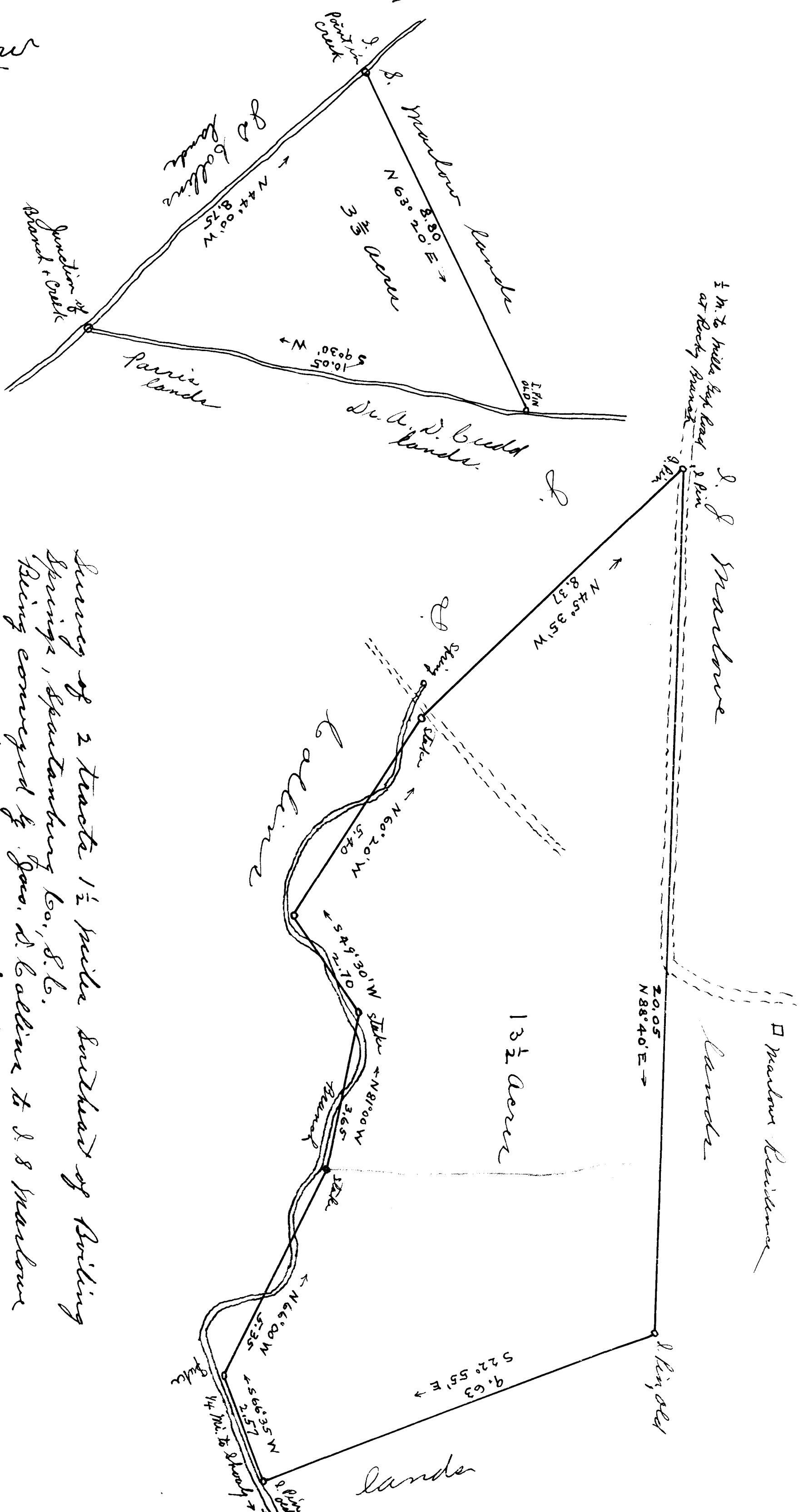


& Part
L. J. Marlow

Magnetic Meridian March 1917



Survey of 2 tracts 1 1/2 miles southeast of Bowling Springs, Spartanburg Co., S.C.
 Being conveyed by Jas. A. Collins to L. J. Marlow
 Made 1917 H. Stirling, L.S.
 Scale 1 inch = 2 chains
 Registered, Certified & Examined March 21-1917