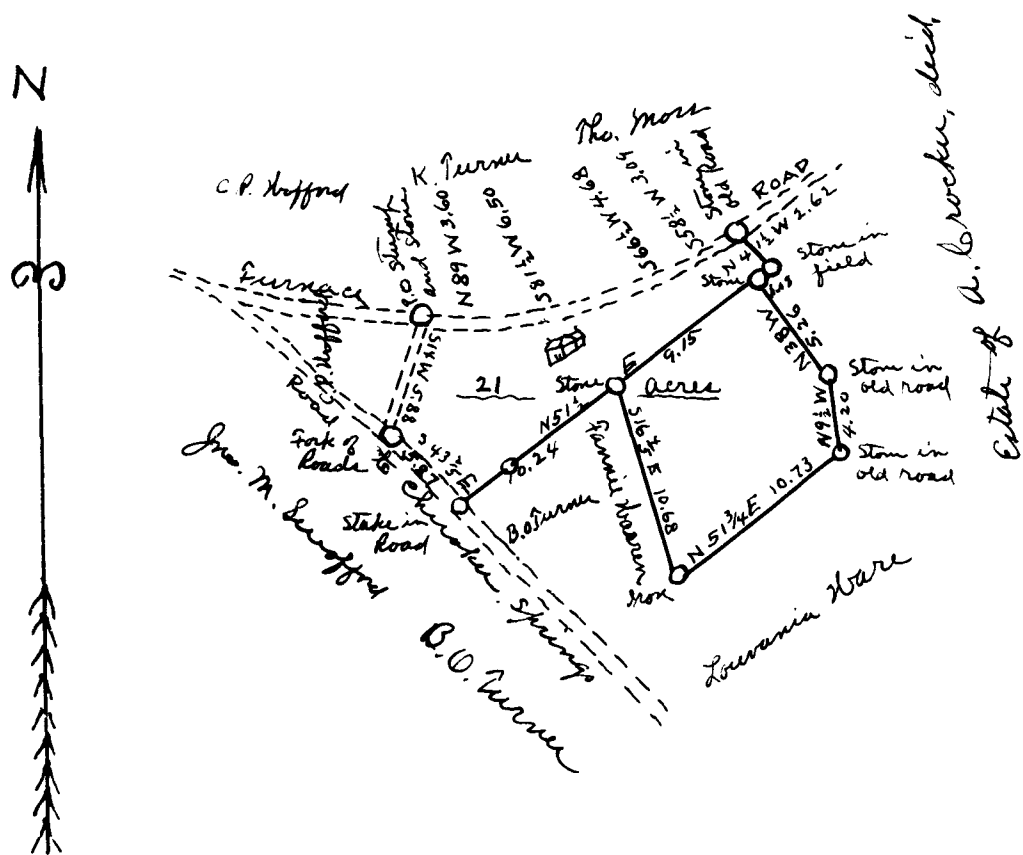


EX PARTE
G. C. BRIDGES



Spartanbury County
South Carolina

The above Map correctly represents
twenty one acres of the Elephus Bishop
dec'd. Surveyed Oct. 30th 1916

By T. E. Johnson
Surveyor

Note See Deed Book 5-V page 5.

Registered, Certified & Examined March 24th 1917