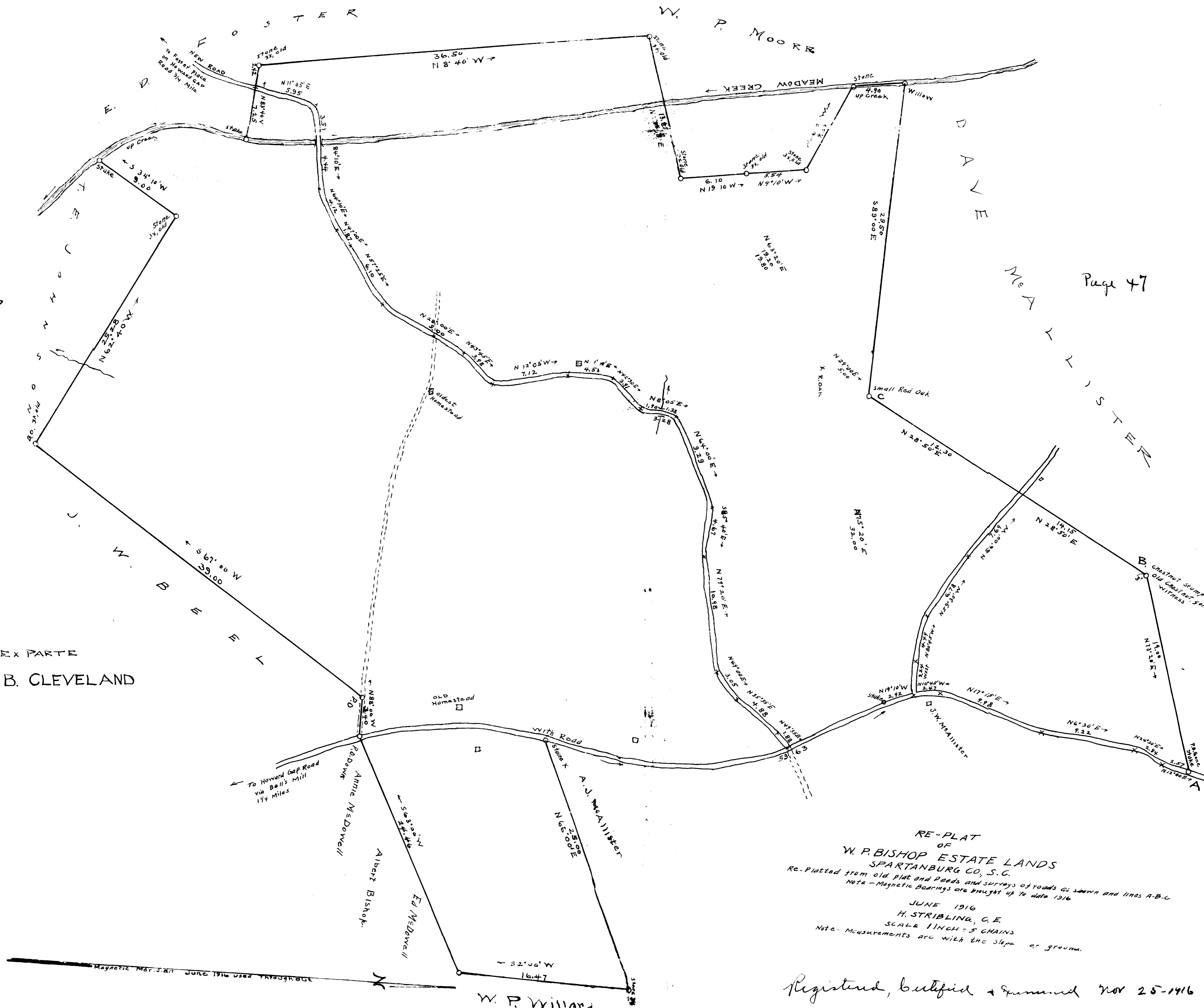


Page 46

Page 47



EX PARTE
JOHN B. CLEVELAND

RE-PLAT
OF
W. P. BISHOP ESTATE LANDS
SPARTANBURG CO., S. C.
Re-platted from old plat and deeds and surveys of roads as shown and lines A-B-C
Note - Magnetic Bearings are brought up to date 1916

JUNE 1916
H. STRIBLING, C. E.
SCALE 1 INCH = 5 CHAINS
Note - Measurements are with the slope or ground.

Registered, certified & examined NOV 25-1916

Magnetic Meridian June 1916 used throughout