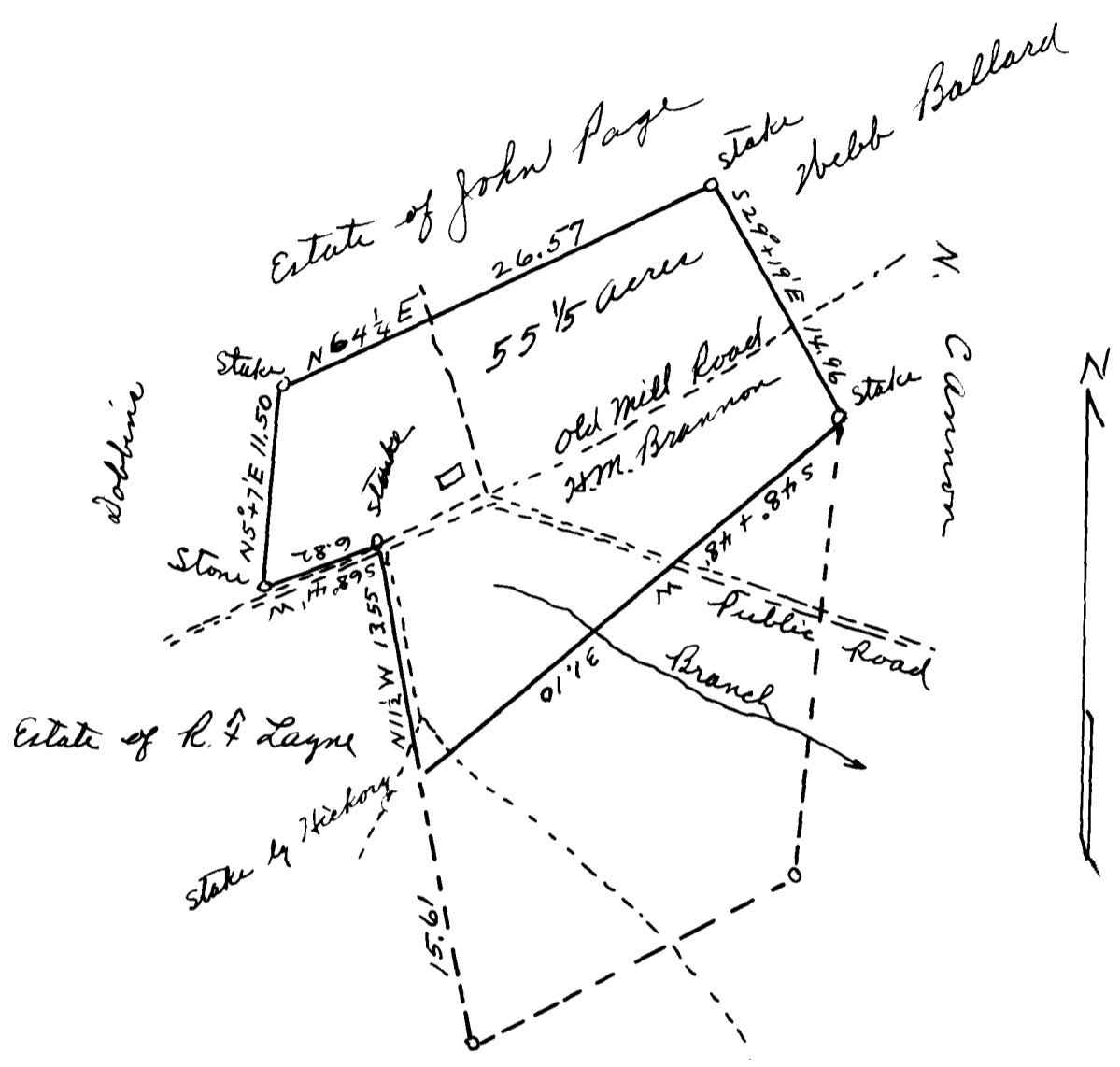


44

EX PARTE
H. M. BRANNON



State of South Carolina
Spartanburg County

The above plat, represented by solid lines, correctly represents a lot of land belonging to H. M. Brannon. It is situated in the above written State and County, and lies on both sides of a branch of Holston Creek, waters of South Pacolet river

Surveyed by me June 30-1911

M. E. Johnson
Surveyor.

Note: See Deed Book 5-R page 189

Registered, certified + Examined Dec. 1-1916