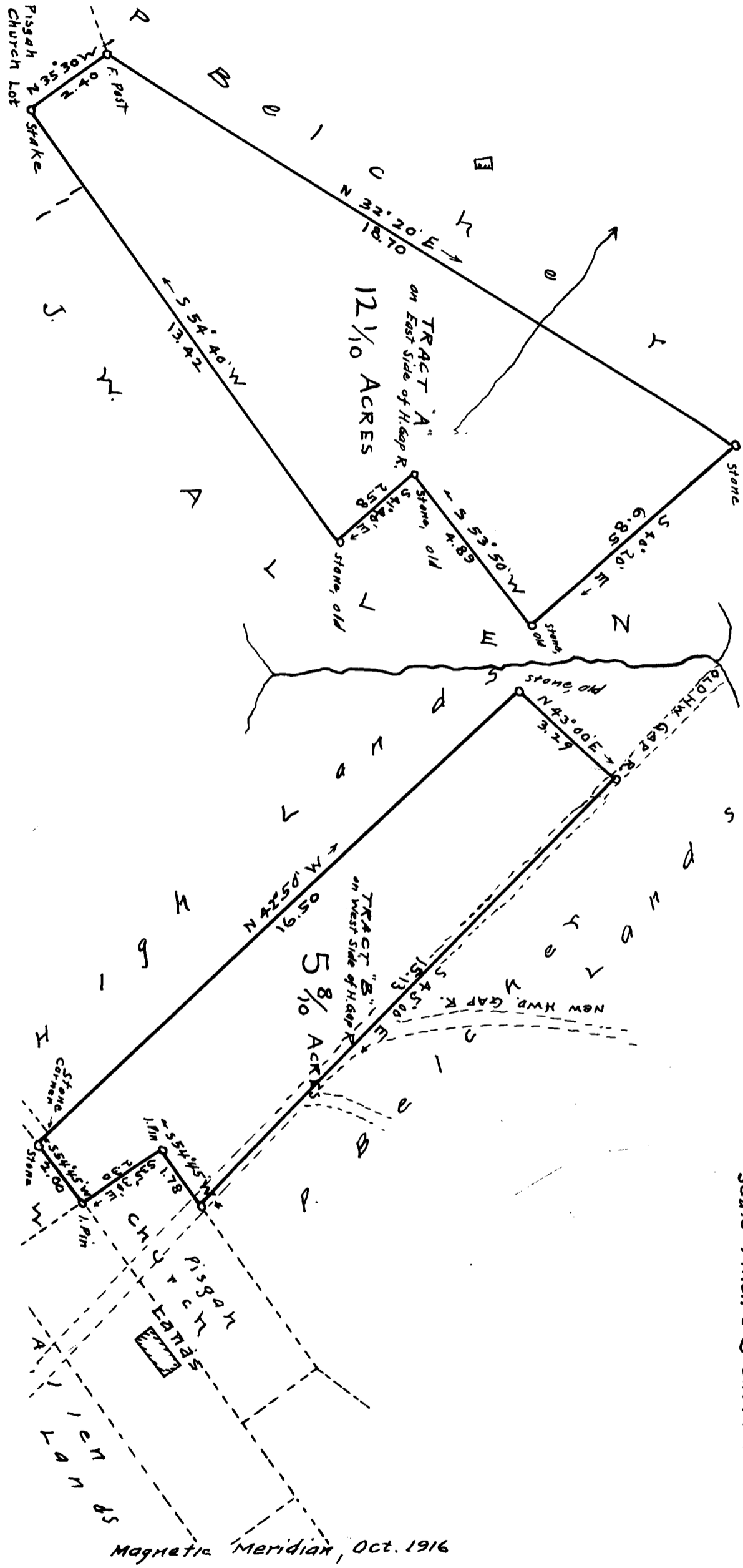


EX PARTE  
J. W. ALLEN

NOTE:

SEE DEED BOOK 5-R. PAGE 9.



SURVEY OF 2 TRACTS  
LANDS BEING CONVEYED BY P. BELCHER TO J. W. ALLEN  
SITUATE AT AND NEAR PISGAH CHURCH,  
SPARTANBURG CO. S.C.

SURVEYED OCT. 8, 1916  
H. STIRLING, C.E.  
SCALE 1 INCH = 3 CHAINS.

Registered, certified & Examined Oct. 30<sup>th</sup> 1916